

Belleville Times

83rd Year No. 51

An Orechio Publication

Serving Belleville Since 1909

Thursday, December 3, 1992

50¢

Officials pull a Houdini: Contract invisible

New Manager signed up at \$80,000 a year; terms of employment are not made public

by Howard Klausner

The Township Council has voted 7-to-1 to sign Interim Manager Stephen Cuccio to a three-year contract as Township Manager, at a salary of \$80,000 a year.

The vote came on Monday night, after the public and press had been advised to go home, as the rest of the session would be "personnel matters."

At some point in the evening, the Council changed its mind and went into public session, as required by

law, to vote on contract approval.

While reliable sources provided the Belleville Times with the general terms of the contract, the specifics were kept a secret. Cuccio, who normally would keep a copy of the contract in his own possession, referred inquiries to Township Attorney Robert Giordano - and pointedly closed the door of his office to the press.

Giordano declined to respond to requests for the contract.

Reliable sources indicate that

Cuccio's perks will include a car, a \$2,000 expense account, hospitalization, a three-week vacation and the state-mandated requirement of three months pay in the event he is dismissed without cause. Cuccio has been paid at the rate of \$5,000 a month while serving as interim Manager.

He was paid in the same range while Township Administrator in Wayne, so the new salary is equivalent to a \$20,000 raise.

The contract terms were approved by a "search committee" composed of Deputy Mayor Mario Drozd, Council President Dr. Frank Noonan and Councilman Tom Spillane.

The search committee is not known to have interviewed any other candidate for the job except Cuccio.

The contract apparently was presented to the Council at its closed session on Monday, and there is a question as to why the matter could

not have been held over to the next regular public session of the Council on Tuesday.

As it was, the so-called "public session" was held in the absence of the public.

Cuccio succeeds Bertrand Kendall, whose starting salary was under \$84,000, the salary to which he was raised.

Kendall's dismissal cost the Township some \$47,000. Kendall currently is working as a consultant in Kearny.

At least one former Kendall supporter had strong words of praise for Cuccio. "I think he has done a fine job, and I'm very happy with him," Councilman Jim Messina said.

Councilman William Cook, the sole vote against the contract approval, declined to discuss the reasons for his vote, except to say, "I hope that now he will be Township Manager for the whole Council, and not just four members."

All in a day's work



CHAIN OF LIFE - Belleville police, firefighters and members of the Clara Maass Mobile Intensive Care Unit all lend their support to stricken Belleville resident, who will be taken to Mount Sinai Hospital for further treatment. (Photo by Howard Klausner)



TO THE RESCUE - Belleville Firefighter and Emergency Medical Service man rushes equipment to a Belleville home on a life saving mission.

Community Fund goodies requested by Township

The Township Council agreed Monday on a list of fund requests for Community Block Development Grant money to be doled out by Essex County.

The requests total more than \$1.3 million, and township officials would be happy to get half the amount.

The county gets the money from the Federal government.

In order of priority, the requests are:

Replacement of 16 fire hydrants, \$80,000.

Phase Two of the Third River Clean-up, \$310,500.

Community Economic Revitalization Program to provide more store-front facades on Washington Avenue and Franklin Avenue, \$175,000.

Sanitary sewer rehabilitation,

including special grants for Kimball and Heckel Streets, \$100,000.

Reconstruction of parts of 11 surveyed streets, \$372,478.

(The street work includes sections of Valley Road, Linden Avenue, Alva Street, Brook Street, Lloyd Place, Cortlandt Street, Maple Avenue, Watching Avenue, Oak Street, Montgomery Street and Celia Terrace.)

Water main replacement, \$93,000.

Barrier-free improvements to the Belleville Public Library, \$50,000.

Streetscape improvements, \$427,536. (Brick pavements, benches, litter baskets and other amenities on Washington Avenue between Rutgers and William Streets.)

CCB elects Fornarotto

Depending on who reports the event, the Concerned Citizens of Belleville elected former Commissioner Joseph Fornarotto as its new President by a vote of 28 to 20, according to Fornarotto, or 22 to 21, according to his defeated rival Cornelis Vander Zwan.

The CCB has some 200 members, not all of them active, according to one member. Fornarotto reportedly arrived at the annual election meeting with more than a score of supporters to win the election.

Fornarotto succeeds former Commissioner Vincent Frantantoni, who had informed the Herald and News of Passaic that he was "planning" to request the State Department of Community Affairs to "investigate" the administration of former Township Manager Bertrand Kendall.

State officials said they were unaware of any request from Frantantoni.

Fornarotto said he would study the idea, and pursue it if he found it worthwhile.

"What we want to do is get everybody together. This town

needs help," Fornarotto said.

Vander Zwan said he felt that Fornarotto would do a good job. "It requires a lot of time and effort, and needs somebody with plenty of time to perform the duties," Vander Zwan said.

Two-car collision injures 3 persons

Mrs. Pat Verian, executive secretary to the Township Manager, sustained a fractured hand, facial cuts and head injuries in a two-car collision on a leaf-covered street, Sunday.

Mrs. Verian was travelling north on Smallwood Avenue near Belleville Avenue when she was in a front end collision with a car driven by a 17-year-old Belleville girl. The other driver and a teen-age passenger sustained injuries.

No summonses were issued. Police said that the heavy leaf coverage on the street may have contributed to the accident.

Mrs. Verian's head hit the windshield with such force as to shatter the glass.

Chamber brings Santa here

On Saturday, Dec. 12, Santa Claus will arrive in the Township of Belleville.

The Belleville Chamber of Commerce has invited Santa to town for all the boys and girls to meet.

Having pictures taken with Santa is an annual event for the children of the Township and a tradition for the Belleville Chamber of Commerce.

Santa will arrive at Noon in front of Town Hall and then will make his way across the street to the Chamber of Commerce offices at 155A Washington Ave.

Refreshments and photographs are made possible by the contributions of the Chamber members.

Chamber Executive Secretary Eileen Brown announced: "We look forward to seeing our friends and their families for this special celebration. 'Happy Holidays!'"

Prosperi sees movement backing Carmen Orechio

Belleville Democratic Chairman Chester Prosperi reported that Nutley Mayor Carmen Orechio was receiving backing of Essex County Democrats for both the Governorship and the State Senate.

Prosperi said he was at a social event on Saturday where the name of Orechio was mentioned prominently as a candidate.

Mayor Orechio responded, "I am 100 percent behind Jim Florio for Governor."

As for the 36th Legislative District, which Republican John Scott now represents in the State Senate, the Mayor replied that he had an open mind.

On Sunday, the Bergen Record speculated that former State Senator Gabe Ambrosio, who lost to Scott last year, might be challenged by Mayor Orechio.

A column written by Trenton Correspondent Neil H. Reiser stated:

"The bash at the San Carlo Restaurant in Ambrosio's home town of Lyndhurst was organized by the 'Friends of Gabe Ambrosio Re-election Campaign.' (Silly us, we thought re-election campaigns were for incumbents.)

"Now comes talk around Bergen and Essex Counties that Ambrosio



Carmen Orechio

could face a challenge from former State Senator Carmen Orechio. Orechio, Mayor of Nutley, didn't run for re-election in '89, after redistricting pitched him onto Ambrosio's turf.

"It might be that he's hankering for another shot, especially seeing as how Ambrosio was unable to hold onto the seat."

Prosperi was emphatic about local support for Orechio. "They can't win without Belleville and Nutley, and Belleville and Nutley are all for Orechio," Prosperi said.

BHS holiday concert set

The Belleville High School Music Department announces its annual evening Holiday Concert on Dec. 16 at 7:30 p.m. in the high school's auditorium. The performing groups include the Symphonic Band, under the direction Joseph

Kraemer, the Chamber Ensemble and Orchestra, under the direction of Edwin Black, and the Mixed Chorus, under the direction of Dr. Thomas Finetti.

A donation of \$2 will be accepted at the door.

Husband charged in death of wife

Murder charges have been filed in Wayne Township Municipal Court against Patrick J. Hellriegel, 45, accused of the fatal beating of his wife, the former Kathleen Pomaco of Belleville.

Mrs. Hellriegel died on Sunday, Nov. 29, in St. Joseph's Hospital, Paterson. She had been unconscious since March 20, when her husband brought her to the hospital, saying she had been injured in a fall in the couple's backyard.

Hospital authorities notified Wayne police of their suspicions about Mrs. Hellriegel's injuries, and Wayne Detective Andrew Bain investigated.

Mr. Hellriegel was charged with aggravated assault. Since then, his attorney, Miles Feinstein, has sought an immediate trial on the

assault charge, but Wayne police delayed action.

Had Mr. Hellriegel been found guilty of assault, he could not have been held on murder charges.

The husband, a self-employed sign painter, was re-arrested at his home on Sunday night, and has been taken to Passaic County Jail to await a decision in Superior Court as to future action in the case. Wayne police said they had answered several domestic violence calls at the Hellriegel home in the past.

The couple's six-year-old daughter is residing with her uncle, Frank Pomaco, attorney for the Belleville Board of Education.

Funeral arrangements were handled by S. and W. Brown Funeral Home of Nutley. Services were private.

Aside From That

By: Howard Klausner

On July 14, 1976, an attractive young divorced mother was slain in her apartment in Belleville by a man wielding a hunting knife. She had been cleaning the bathtub of her apartment when her assailant entered the bathroom and attacked her. Donna Litchfield, 24, was found stabbed many times, many of the wounds inflicted as she tried to ward off her murderer. In the apartment with Mrs. Litchfield was her two-year-old daughter, Tina who had not witnessed the slaying because a family friend had rushed her out of the apartment when the quarrel erupted between the victim and Stephen C. Moore, who had been dating Mrs. Litchfield. The woman friend of Mrs. Litchfield told police that she discovered the murder when she came back to the apartment. Based on information provided by the friend, police traced Moore to Surf City where his car was spotted by local authorities. Acquaintances said Moore had been planning to flee to the Mojave Desert. Moore was arrested at a garage owned by a friend, who was unaware of the murder. Moore had used his friend's knife to commit the crime. ♦♦♦♦♦ Detective Captain Ermin D. Oliveri and Detectives Salvatore LoCoco and Raymond Kimble made the arrest, along with members of the Essex County Homicide Squad. The murder weapon was found in the apartment. According to the news reports of the time, Assistant Prosecutor Anthony Mautone head of the Homicide Squad handled the case initially. His brother, Assistant Prosecutor Dennis Mautone, now practicing law in Belleville, handled the trial. None of the Belleville detectives were called upon to testify at the trial, which resulted in the conviction of Moore. ♦♦♦♦♦ Moore, reportedly an heir to the Benjamin Moore Paint Company fortune, faced many years in prison on sentencing. However, the jury verdict was overturned on a technicality. The court reportedly had not allowed a sanity test to be administered, or had not allowed it in evidence, and defense counsel claimed his client was innocent by reason of insanity.

The ruling came in Federal Court, and the case was sent back to Essex County for retrial. But through an odd set of circumstances, the Essex County Prosecutor could not handle the case. Moore's defense lawyer had been appointed to the office, and this disqualified the entire office from trying the case. So the retrial was referred to the Attorney General's office, which chose to examine the insanity plea, and did so by filing papers with the State court. The State court found Moore to be insane, and he was sent to the Vroom Building at Trenton State Prison. Later, he was given the privilege of walking the grounds, and accordingly, he walked off. Recaptured, he was last reported at Marlboro Hospital, under minimum security. Had he been convicted of murder, he probably would have served some 14 years and been released. In his current situation, unless he is found to have recovered his sanity, he will spend the rest of his life in custody.

Tina Litchfield was raised by her father. She was aware of what had happened, but until recently had never seen a news account of the terrible event. Understandably, her father was not anxious for her to be exposed to the brutal facts of the slaying. Recently, she went to the Belleville Public Library and studied microfilmed pages of the Belleville Times, seeing for the first time what the press accounts were. She has not discussed her reactions but the sense of horror at the senseless crime is still with those who are familiar with the event.

Belleville people are not ones to pass up a good meal, and word comes from the Meadowlands that Chef Alexander is in residence at Prato's on Paterson Plank Road in Carlstadt. While there are excellent eating places in Belleville, there is always room on the menu for something remarkably different in Continental cuisine. Or, so say the local gourmets. ♦♦♦♦♦ Dennis Qualtieri continues to lead the fight against flooding in Silver Lake. "It took 30 years to get the first half done," Qualtieri said to friends at the Crossing Inn recently. "Now we're hopeful of getting the final half done." Qualtieri said he had a meeting scheduled with an engineer to examine the flood-prone Lake Street neighborhood that still requires sewer reconstruction. The current hope is to finance it through Community Redevelopment funds. It won't happen overnight, but at least it's a start. Larry Walsh played host to the celebrants of Silver Lake Day, Sunday, with a wedding-feast array of hors d'oeuvres and lots of liquid refreshment. Among those in attendance were Ed O'Neill, the prime mover of the day's observance; Margaret O'Neill and their family; Mayor Marina Perna, Council Members Jim Messina and Tom Spillane, and such notables as District Leader Marie Burke, triumphant in her clean-up of the Amtrak right-of-way, Library Director David Bryant, Belleville Historian Bob MacFadyen, Historical Society Member Isabel Wittinger, Planning Board Chairman Sam Papa and Neighborhood Co-ordinator Bob Shumayko. A grand finish to a great day!

Music groups schedule holiday concerts

Several musical groups in the Belleville school system will be performing through the holiday season.

Dec. 3: School 8 chorus, 1:30 p.m., Fewsnight Church; Dec. 9: middle school band, orchestra, chorus, 7:30 p.m., middle school auditorium; Dec. 11: School 8 chorus, 1:30 p.m. Paramus Park Mall; Dec. 14: School 9 chorus, 7:15 p.m. School 9 auditorium; Dec. 16: School 4 chorus, 1 p.m., School 4

auditorium; School 5 chorus, 1:30 p.m. Paramus Park Mall; School 3 band, orchestra, chorus, 1:15 p.m., School 3 auditorium; high school band, orchestra, chorus, 7:30 p.m., high school auditorium; Dec. 17: School 10 chorus, 9:30 a.m., School 10 auditorium; Dec. 21: School 7 band, orchestra, chorus, 7 p.m., School 7 auditorium; Dec. 22: School 5 chorus, 7 p.m., School 5 auditorium.



Charles Auricemma of Auricemma Electric and Dr. Leonard M. Russo of Russo Family Chiropractic team up to help the needy families in Belleville. Dr. Russo and Auricemma are donating canned food and turkey gift certificates to the Belleville Welfare Department. This is the first year that they have organized this drive and plan to continue in the future.



THE PUBLIC EYE - Television news reporter Art McFarland, right, visited School 3 during mock election exercises recently. From left are Principal Raffaella Saulino and Parent Linda Marino.

Girl Scout recruitment underway in Belleville

The Girl Scout Council of Greater Essex County has announced that recruitment is now underway for Belleville girls ages 5-17. Those who are interested in becoming members may contact the Girl Scout Service Center at (201) 746-8200, Monday through Friday between 9 a.m. and 5 p.m.

Girls who enter Girl Scouting find themselves open to a world of choices regarding their lives and their activities. Opportunities exist to travel, make new friends with similar interests, learn skills, go camping and help others through community service.

Membership in Girl Scouts costs \$6 and includes insurance. Adults are also needed as troop leaders and support volunteers.



★ AUTO
★ HOMEOWNERS/TENANT
★ BUSINESS/WORKERS COMP.
ALL YOUR INSURANCE NEEDS
COME IN FOR FREE QUOTES

TROISE
INSURANCE AGENCY INC.
172 Washington Avenue, Belleville
749-4100
HOURS: Mon.-Thurs. 9:30-5:30
Thurs. 8:30-5pm
Sat. Evening by appointment only

SANTA
WILL VISIT
YOUR HOME!
759-8913
By Appointment
Only
Call Soon!!
Also Doing House
& School Parties.



CHIROPRACTIC FOR BETTER HEALTH

DR. GAETANO BUTTITTA

CHIROPRACTOR

WORKER'S COMP COVERS

For injuries which are job-related, Worker's Compensation will compensate the patient. This applies to chiropractic treatment as well as other types of health care. In fact, because of the savings in both time lost and costs, insurance companies are very favorably disposed to chiropractic treatment of injuries.

What kind of savings? Well, for every day a worker is off the job because of a job-related injury, it costs Worker's Comp, the company, and the individual money. Anything which can reduce the amount of time

lost is a money-saver; and, over the years, chiropractic treatment has proven itself extremely effective in returning workers to full activity after certain types of injuries.

Of course savings in money may not be your primary interest, but it should be in your interest to be returned to full vigorous health in the shortest possible time, and with the least chance of complications.

Buttitta Chiropractic
Physicians Group
591 Franklin Ave.
Nutley • 661-1100

FREE INITIAL
CONSULTATION
AND EXAMINATION
(A \$75 VALUE)

Includes: Orthopedic, Neurological & Chiropractic
For New Patients Only • With Mention Of Ad

Middle School aims for the 21st Century

The administration of Belleville Middle School has introduced a new course entitled, "Introduction to Technology."

The course, taught by Michael Hudak for seventh graders. The objective of the course is to use knowledge to solve problems and expand man's capabilities.

The students are led through a project design using creative problem solving techniques. In cooperative learning groups the students work on a design brief and then build a prototype model of the device. The course requires the students to use interdisciplinary approaches to solve the problem.

Also in the course, the history of various devices will be explored.

For example, students will trace the development of the calculating devices from the abacus to the modern day calculator.

The first project is a glider which is part of the project in aerodynamics.

To prepare for this new course, Mr. Hudak along with several other teachers, wrote a curriculum guide on Industrial Arts Technology. He is also taking graduate courses at Montclair State College.

"Courses such as this will prepare students to enter into the twenty-first century," stated principal, Mario Di Maggio. "We are pleased with the enthusiasm and level of work from our students."



Kneeling - Mohammad Qureshi, Ed Lardiere. Standing - Joelle Dalbo, John Russomanno, Nicole Viscio, Natalie Campolieto.



Ed Lardiere, Nicole De Candia, Jacklyn Garule, Edgar Cortez.

Jury upholds board on secretary dismissal

A jury in Newark on Nov. 20 returned a verdict upholding the action of the Belleville Board of Education in dismissing Dr. Leonard J. DiGiovanni as the Board Secretary Business Admin-

istrator in February of 1988.

The verdict concluded the board's four year legal battle with Dr. DiGiovanni over his allegedly wrongful termination less than six months into his two year contract.

The board was represented by Anthony F. Malanga Jr., a partner in the Belleville law firm of Gacci-one, Pomaco & Beck. "I was extremely pleased with the verdict," Malanga said, "especially since the board's exposure was in excess of \$120,000 had the jury found that the board had no cause to terminate Dr. DiGiovanni's contract."

Malanga stated that he did not believe Dr. DiGiovanni would appeal the decision.

Meyer's Cafe - Restaurant

Have Your Next Affair

In our Beautiful Dining Room

• Graduations • Showers •

• Birthdays •

• Meetings • Funerals •

• Sunday Buffets •

277 Franklin Ave. • Nutley
667-8587

HOLIDAY

DENTAL SAVINGS

SPECIAL HOLIDAY OFFER

A Complimentary
Oral Exam
And Special
Treatment Fees



Call for Details "NO-PAINO (667-2466)

James D. Muglia, DDS, BA, FAGD

18 Years of Treating & Beautifying Smiles
Family • Cosmetic • Restorative Dentistry
24 Hours Emergency Service



Smile Today

10 Franklin Avenue • Nutley
Dial "NO-PAINO" (667-2466)

BHS students hold Atlantic City workshops

The Belleville High School Peers Educating Peers Club AIDS/HIV Educators were selected to present a workshop at the annual New Jersey School Boards Association Conference in Atlantic City.

The proposal was submitted by substance awareness coordinator, Deborah Meola. The students participated in three 20 minute mini workshops on Oct. 30.

The AIDS/HIV Educators include:

John Alvarado, Toni DeLeva,

Irene Guevara, Amita Parekh, Amol Shah, Melanie Van Dam, Jill Bernisky, Dennis DeWork, Brian Harvey, Cecily Placinti, Tara Slattery, William Zigmund, Michele Capriglione, Jennifer Fernicola, Matt Kastner, Virginia Rajnes and Manisha Tare.

Advisors Patricia Guardino, high school nurse, and Philip Esposito, high school guidance counselor, and Deborah Meola will assist in preparing the students for the presentation.

BELLEVILLE HIGH SCHOOL NEWS

Computer expert at BHS

By Dulce Pedro

Susan Chamurra, a Chubb Institute instructor, visited Belleville High School on Nov. 17. Chubb Institute, located in Jersey City and Parsippany, provides three short intensive courses in Computer Programming, Computer Operations, and Personal Computer Applications.

Chamurra, who spoke to students in Ms. Partus' computer science classes, stated that the use of computers is pervasive throughout the business industry. She emphasized to students that it is necessary to have transferable skills to assure

job security. Major companies, such as IBM and AT&T, are laying off people because of increased competition from the global work force. Therefore, personal computer skills are critical in today's job market. Many companies who are "downsizing" staff are highly selective in hiring new employees, showing a preference to applicants who can demonstrate basic computer skills. Chamurra emphasized that salary scales and entry level jobs are available, but only to those with strong oral and written communication skills that are enhanced by computer training.

Rehab center visited

By Cathy Soccimaro

Richard Ruffalo, BHS science teacher and advisor of the Club for Allied Medical Professions (CLAMP), brought club members on a field trip to the Kessler Rehabilitation Center on Nov. 19.

Students toured the Kessler Center and were enlightened about a variety of medical and health careers. They learned that there is a tremendous need for people in the medical profession from technicians and nurses to dentists and

doctors.

CLAMP is open to all students grades, 9, 10, 11, and 12. The organization was established to educate students about the numerous careers available in the medical field. Ruffalo usually holds at least one meeting a month. The club participates in a variety of activities. Ruffalo invites numerous guest speakers who provide students with a wealth of information concerning careers in the medical profession.

Brian Harvey wins Bausch & Lomb award

By Susan Maglione

Bausch & Lomb, world wide leader in healthcare and optics, recently announced that BHS senior, Brian Harvey, is awarded the annual Bausch & Lomb Science Award. The Science Award, a handsome bronze medal, is presented each year to winners at approximately 6,500 participating schools throughout the United States, Canada and several foreign nations. More than 380,000 medals have been awarded to outstanding science students since the program began in 1993.

According to Mrs. Bess Efsthathou, Science Supervisor, who will present the award at the Annual Raymond O. Smith Scholastic Awards Ceremony, "The Bausch & Lomb Science Award is especial-

ly significant because it recognizes the junior student at our school who has attained the highest scholastic standing in science subjects as of June, 1992."

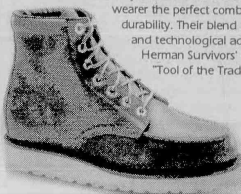
Harvey is eligible to apply to become a University of Rochester Bausch & Lomb Scholar. This designation carries with it scholarship funds, the minimum amount being \$5,000 per year for four years.

Bausch & Lomb is one of America's oldest and most successful companies, with a heritage of technical achievement and product excellence dating back to 1853. The company, headquartered in Rochester, New York has manufacturing or marketing organizations in 25 countries and employs 13,500 people world wide.

HERMAN SURVIVORS
SINCE 1879

WORK BOOT COLLECTION

Herman Survivors' century old reputation for quality is demonstrated in every detail throughout this Full Grain Leather Collection. Dual Density soles and Goodyear Welt construction combine to give the wearer the perfect combination of comfort and durability. Their blend of up to date styling and technological advancements make Herman Survivors' work shoes an essential "Tool of the Trade".



Style #7622

Orig. \$64.95

SALE

\$39.95

White Supplies

Sale Ends Sun. 12/6/92

ATLANTIC
uniform co.

444 Washington Ave., Belleville
751-1242

OPEN: Mon.-Fri. 9am-8pm Sat. 9am-6pm
★ OPEN SUNDAYS 12pm-5pm ★

• Workclothes • Uniforms • Footwear • Large Sizes • Corporate Accounts

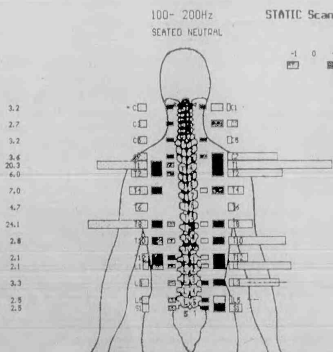
BHS service announcement

Friday, Dec. 11, is the last day that BHS students will be able to order a 1993 yearbook. Due to publisher's deadlines, the final number of books to print must be ordered by Dec. 11. No books will be available for purchase in June.

Students can order books through journalism sales representatives who are stationed in the cafeteria during all lunch periods, or through Mr. Salese in Room 154, before or after school. The full purchase price is \$45. A 16 page supplement that includes eight pages of the prom and eight pages of graduation, is an additional \$.55. Students may place a book order with a \$25 deposit. Please make checks payable to Belleville High School.

FREE...FREE...FREE...

Computerized Analysis
of your
SPINAL MUSCULAR CONDITIONS
(a \$225 value)



(thin solid bars and small boxes, if any, are signals from "compared section")

...it lets you see where and why YOU HURT!
...it lets you see your SPINAL WEAKNESS!

★ CALL TODAY FOR APPOINTMENT ★

759-3600

offer good thru Dec. 19, 1992

GUARINO CHIROPRACTIC CENTER

858 Joralemon St. Belleville, N.J.

Video Repair Express

Having a
Problem With
Your V.C.R.?

FREE Pick-up

FREE Return

FREE Repair Estimate

Senior
Citizen
Discount

90 Day Guarantee on Repairs • Most Repairs Done in 48 hours

V.C.R. Cleaning \$14.95 Reg. \$29.99

Call Video Repair Express
(Video Tonite)

11 Ridge Rd., North Arlington

997-4141

MERRY-MAKING MONEY-SAVING

HOLIDAY MARKDOWNS

Arlington Jewelers

261 Franklin Ave. Nutley • 661-1558

Open: Mon. & Fri. 10-8 Tues.-Wed.-Thurs. 10-6 Sat. 10-5 Closed Sundays

GOLD AND DIAMOND LIQUIDATION EXTRAVAGANZA!!

Take Advantage Of Our Lowest Prices EVER No Better Buy ANYWHERE!

SPECIAL SALE ITEMS

Save 40% On every Bulova, Pulsar & Caravel Watch in stock
Save 40-50% On Every Ladies' & Men's 14K Gold & Diamond Watch in stock
Save 50% on every 14K Ladies & Gents Bracelets or chains in stock

REG NOW

45.00 28.00

88.00 52.99

99.00 59.99

106.00 63.99

120.00 60.00

350.00 210.00

450.00 290.00

850.00 500.00

150.00 80.00

Prices Starting From 150.00

Prices Starting From 150.00

Prices Starting From 99.00 & UP

150.00 99.00

49.00 25.00

43.00 25.00

65.00 40.00

80.00 50.00

38.00 25.00

65.00 40.00

140.00 85.00

PLUS

Diamond Studs, Pendants, Engagement Rings
In All Sizes At Great Savings

ALL ITEMS ARE 14K GOLD - QUANTITIES LIMITED
PRICES SUBJECT TO CHANGE DUE TO FLUCTUATING GOLD MARKET
NOT RESPONSIBLE FOR TYPOGRAPHICAL ERRORS

FREE SOLDERING
ON ANY
14K CHAIN OR
BRACELET
(Up to \$500 Value)

With This Coupon Expires 12/31/92

Present Coupon When Item Is Purchased

One Per Customer

Offer Good At
Franklin Ave. Nutley Store
Only

\$1 WATCH BATTERY REPLACEMENT
(Up to \$500 Value)
With Coupon
Expires 12/31/92

One Watch Per Customer

Offer Good At
Franklin Ave. Nutley Store
Only

Expires 12/31/92

Offer Good At
Franklin Ave. Nutley Store
Only

UP TO 50% OFF REG. PRICE
ON EVERY
LADIES 14K GOLD &
DIAMOND WATCH
IN STOCK

Expires 12/31/92

Offer Good At
Franklin Ave. Nutley Store
Only

Expires 12/31/92

Offer Good At
Franklin Ave. Nutley Store
Only

SAVE 30-40% OFF REG. PRICE
Every Diamond
in Stock

Expires 12/31/92

Offer Good At
Franklin Ave. Nutley Store
Only

Expires 12/31/92

Offer Good At
Franklin Ave. Nutley Store
Only

OUR OPINION

What kind of government?

Why have a Faulkner Act?

In and of itself, the Faulkner Act does not end the threat of corruption in municipal government, but it does make it a little more difficult.

The idea of the Faulkner Act was to set up a system of municipal government which would be free of political interference.

The theory is that if an expert in municipal administration is hired to run the day-to-day operations of a town, the peddling of jobs, contracts and influence would be curtailed.

Twice, now, Belleville has voted to try the Council-Manager form of government.

Thirty years ago, it began with high promise. An independent administrator was hired, and he did a fine job. It was too fine a job, in the opinion of the Township Council of the time. The Manager was forced out, and a more pliable administrator was hired, and the township became so mired in controversy that it went back to the Commission form of government.

What was wrong with the commission system is that it sets up five or more independent governments, each with its political boss, and the result is paralysis, with as little being done as possible, while the commissioners run rough shod over their underlings, each a little Napoleon.

In some towns, Commission government may work, but it hasn't in Belleville.

Two years ago, we started out again with government-by-expert, and it quickly foundered on those who want government by politics.

We may ask why Kearny, with virtually the same location and the same population as Belleville, can afford 150 police to our 80. The reason is the tax base, and the fact that investors are willing to come to a community where they find efficient government, free from turmoil.

A comparison of the two towns shows that while Kearny is not a Paradise, it is a stable town in which the public respects the government, or at least believes in its integrity.

Adopting the Faulkner Act was an attempt to achieve what Kearny achieved long ago, the kind of town that is respected by investors.

And until we have those investors, the homeowners of Belleville will be facing an ever mounting burden of taxation.

The oasis of Belleville

A visit to the Belleville Public Library is one of the more pleasant experiences to enjoy. The redesign of the Carnegie Reading Room has opened the interior to sunlight from all directions, and the ceiling and wall paintings help flood the room with color and brightness.

The quietly efficient library workers, the array of computers, the specialized areas and the general atmosphere that is so conducive to reading are a great achievement for a town of any size.

With our schools, the library is the great hope of Belleville. People need a place of repose and inspiration, and the library provides that place.

Library Director David Bryant has gone beyond this, in becoming involved with community activities, not the least of which was the library participation in Silver Lake Day.

The library branch in Silver Lake has been important to the people of the community, and the pay off is the growing readership and use of the branch, now open some 20 hours a week.

A library doesn't simply grow with the community. It nourishes the community and helps it to grow. And the Belleville Public Library is an example of this.

Letters Welcome

The Belleville Times welcomes letters, preferably 300 words or less, from readers. To be considered for publication, letters must be typed or legibly handwritten and must include the writer's address and daytime telephone number. Unsigned letters will not be published and names will not be withheld, unless publication would jeopardize the writer's personal or job security. We reserve the right to edit for length and clarity.

Belleville Times

Serving Belleville Since 1909

(USPS 049-220)

Publisher: Frank Orechio
Arnie Ziem
General Manager
Published Every Thursday
At 155A Washington Ave.
Belleville, N.J. 07109

Second-Class Postage Paid

At Newark, N.J.

Postmaster: Send address changes to:
 The Belleville Times, 155A Washington Ave.,
 Belleville, NJ 07109.

Editor: Howard Klausner
Social Editor: Helen Maguire
Sports Editor: Michael Lamberti
Advertising: Rene Theodore
Art Director: Diane Lombardy
 All departments call:
759-3200

Fax: 667-3904

Annual Subscription: \$16.00
Senior Citizens: \$ 8.00

OUR OPINION

Why a Manager?

To the editor:

I don't know who to write this to. But why does Belleville need a Manager and if we do, why don't you get somebody from Belleville. Don't print this in the paper unless you want to answer it. If you do print it, don't put my name in it.

And another thing, why does the Columbus Day Parade — Belleville-Nutley — start at the high school and go to Nutley. The people from Division Avenue down can't get to see it unless you have a car.

Also, why don't you give your subscribers a break. Give us a two year subscription for \$12, to seniors and other subscribers.

Name withheld

Ed. note: Why does a ship have a captain?

The Nativity

To the editor:

Suffer and hurt is very much felt for the loss of the nativity at public places

The nativity is a scene of a family of honor, a family of morals, a family of values, a family not found in wrongful places

When laws are made to change the morals and values in certain ways, the family always walks away

The morals and values which the family hold comes from that which is very old.

Suffer and hurt is very much felt for the loss of the nativity at public places

You need not be religious to know that which is so precious

But when family morals and values are gone in public places

The family must walk away from those places.

Clara Ryan

Message of courage

To the editor:

I would like to comment on the letter published on the "Your Opinion" page of the Belleville Times, dated November 5, 1992. It was titled, "A successful year," and was written by Richard Ruffalo.

I would like to commend Mr. Ruffalo on his outstanding achievements. I sat for a few minutes in awe after reading his "letter to the editor." I think it is just wonderful that a person can have enough courage and stamina to see obstacles as a challenge and strive to overcome them. Mr. Ruffalo, you certainly have done that! I'm glad you have found success in competition through sports.

It makes us realize how much we take for granted. But it also gives us encouragement to go forward. Thank you for the letter, Mr. Ruffalo. Congratulations on your many achievements and may you have continued success.

Thank you, also, editor.

Michael Fabricatore

Street cleaning woes

To the editor:

Although I'm not one to make complaints in writing, in this instance I have the need to speak up.

First of all, why is it that in November, residents on Valley Street still have to move their vehicles to the opposite side of the street when the street cleaner doesn't come through?

Secondly, in the months that it would seem normal to have the street cleaner come through, he doesn't?

Thirdly, even when he does come through, the street cleaning machine doesn't complete a sufficient job — it leaves dirt, leaves and such behind. What it does do, is make more of a mess than before.

This situation also always causes a traffic problem on our one way street.

I know I speak for all residents and merchants alike who live and work on Valley Street, that it's not fair for us to have to move our cars and trucks to the opposite side of the road for the street cleaner and if we don't, we get a ticket from the Belleville police.

Please respond to this problem for I await your response and/or solution.

Victoria Hartford

Aid is opposed

To the editor:

In starting, let me say that it is not without compassion for the Haitian boat people, who are even now preparing to evacuate Haiti and come to the United States, that I write this letter. It is however with a deeper concern and compassion for our own citizens who face a daily crisis in America due to joblessness, inadequate health care, homelessness, crime and the AIDS epidemic. I'm not even touching upon the disastrous effect this would have upon our welfare, judicial and law enforcement systems which are already overburdened and are unable now to meet our needs.

If the new administration's top priority really is the economy, then they must realize the utter chaos that would result from the artificial integration of hundreds of thousands of Haitians into an economy that is already wobbling at best. After all these years, we still have not been able to transition into "the American Dream" the Mariel boat people from Cuba. To add an additional burden to this unsolved problem might just be the last straw. A better way must be found to help these people, a way that doesn't create a precedent that is impossible for any country to maintain.

If you care, I urge you to write to your representatives and ask them to use their influence to dissuade the President-elect from following this disastrous course.

Barbara Hahn



By Frank Orechio

• **MONDAY**, Newark Mayor Sharpe James paid a reported \$30,000 for a full page ad in the Newark Ledger criticizing the Passaic Valley Sewerage Commission. Mayor James recommends an independent management study of PVSC operations; veto power by the Municipal Council over the PVSC minutes; spending cap on PVSC budget; monitor PVSC by N. J. Department of Community Affairs; increase Newark representation on PVSC; rescind bonding authority of PVSC. As a P.S., Mayor James urges readers to attend the next scheduled public meeting of the PVSC Tuesday, December 8 at 12:30 pm (a work session), and the regular meeting at 5:30 at 600 Wilson Ave., Newark.

One wonders if Mayor James is speaking for the 30 owners and 8 customers of PVSC. Mayor James' criticism cannot be taken too lightly by the Passaic Valley Sewerage Commission. The PVSC could explore various possibilities to keep down the cost of operations. The PVSC is under compelling obligation to listen to any responsible professional who can offer potential savings opportunities. I strongly recommend this course of action, although I find an effort to suppress the voice of a professional who may very well provide the commission with an opportunity to save money.

• If you're planning a trip to Europe, I would encourage you to take Continental Airlines. At Newark's Terminal C, your needs will be served by two of the most competent airline employees that I have met in my thirty years of flying. Jim Galletta is the international concierge, ably assisted by Zena Reutov. Their speed at processing passengers and their problems did not interfere with their politeness and courteousness.

We were total strangers, but they made my brother, Carmen, and I feel like long lost friends — and they treated customers in line before us and after us no different than they treated us.

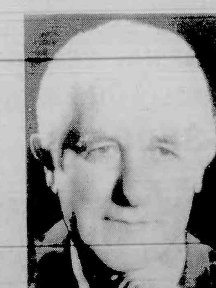
I want to compliment the first class cabin crew aboard Continental's Flight 51 to Frankfurt for their efficient service in attending to the passengers' needs — service manager, Elke Luneberg, and

flight attendants, Maria Kelly and Heidi Simmons. If you see those name tags, remember, you will be in good hands.



Louise Palagano

• **A RARE** event happened in Bloomfield when the absentee ballots were added to the machine totals for council candidates. Incumbent Councilwoman Louise Palagano received 9,177, and Councilman-elect John Crecco received 9,177. These two folks have already earned a high place in the history of Bloomfield, and now we have some figures as a footnote.



John Crecco

• **CARMEN** and I were in Italy, walking the streets of Rome, when we were pleasantly surprised to bump into Mike Disaro of Belleville, brother of Joe Disaro.

• **ESSEX** County administrators and members of the Superior Court are trying to reach an agreement on new judicial quarters. The two properties in contention are the Blue Cross and Blue Shield building and the Gibraltar Building. Whatever site is decided upon, it has always been my belief public agencies should own the facility they occupy.

• **FOR** some among us, things have been tough for the past couple of years, and there appears to be no light at the end of the tunnel. Many of us senior citizens lived through those hours, days, weeks, months and years during the 30's. I remember when my mother and neighbors would buy flour in 100 pound bags, and when the bags were empty, they were used either for pillowcases or T-shirts.

• **I MAKE** no apologies for supporting the Clinton-Gore presidential ticket. As I supported Ronald Reagan for two elections and George Bush in 1988, the same reason motivated me to support Clinton-Gore. If Clinton does for America what he did for Arkansas, he is guaranteed reelection in 1996.



Bill Clinton

• **THE** Andrew Hurricane which devastated lower Florida last August was recently in the news again. It reminded me that Nutley Tax Assessor Joe Reilly and his family were obliged to abandon their home and taken in by his best friend, Nutley Code Enforcer Pat Intrinckle, who hosted 21 guests overnight. One wouldn't expect less from a kind-hearted human being like Pat.

Friends selling Entertainment '93

The Friends of the Belleville Public Library and Information Center, 221 Washington Avenue, are selling Entertainment '93 books for \$40, covering the Essex, Hudson, and surrounding areas. Now you can have all the fun and save the cost on almost everything you like to do.

With the exclusive Entertainment '93, you will be welcomed at some of the best restaurants in town. Buy one dinner or entree, receive the second on the house, or 50% off just by presenting the card. Copies of menus are included to help you choose where to go. You card also gets you 50% off hundreds of hotels, plus big savings on vacations, airfare, cruises, tours and auto rentals.

But that's not all. Choose from hundreds of two for one or 50% coupons for family dining, movies, shows, concerts, sports and other exciting offers.

Books are available at the Circulation Desk of the Main Library and at the Shafter Branch Library, 30 Magnolia Street.

Entertainment '93 makes excellent holiday gift-giving, or a good gift for you and your family.

Shafter closing for renovations

The Shafter Branch of the Belleville Public Library, located in Number Four School at 30 Magnolia Street in Silver Lake, will be closed for ceiling and lighting improvements for the week of Dec. 7-11. These changes have been planned for several months, with the week of Dec. 7 being the first available time to carry out these changes. Lighting enhancements will include the installation of metal halide lighting throughout the library, which will improve the appearance and reading environment in the Branch Library. According to Branch Librarian, Frederick Lewis, "We have wanted to make aesthetic improvements to the Shafter Branch for some time. By closing the Branch during the week of Dec. 7, we will be better able to coordinate the work and avoid risks to visitors during the changes. We think that patience by the public during our brief suspension of services will be rewarded by a better library when we reopen on Dec. 14."

The Main Library always welcomes borrowers from the Shafter Branch and will do so during regular library hours throughout the week of Dec. 7. The Main Library is open Monday, Tuesday and Thursday, 9 a.m. to 9 p.m., Wednesday, Friday and Saturday, 9 a.m. to 5 p.m. The Cozzarelli Children's Room is open Monday, 9 a.m. to 9 p.m., Tuesday through Saturday, 9 a.m. to 5 p.m. All library departments will be closed on Dec. 24, 25, 31, and Jan. 1, 1993.

Clay calls for lawsuit against illegal dumpers

Freeholder Vice President Arthur L. Clay stated last week he was upset over the low fines imposed on two companies for dumping solid waste at the County's hilltop property in Verona. He said that he plans to introduce a resolution initiating a lawsuit against the dumpers in order to recover the cost of the cleanup of the property. The companies, D&D Asphalt Company of Wayne and M.J. Sheridan & Son, Inc., were each fined \$8,000 after pleading guilty. The county paid approximately \$2 million to clean up the site.

"It's amazing that they were

allowed to cause millions of dollars damage and were then fined only eight thousand dollars," Clay said. "We are just about paying them to dump on our property."

"The county's property should not be a dumping ground for solid waste producers," Clay added.

"Unfortunately, it seems that the courts disagree. With this sort of ruling there's no reason not to dump on county lands."

Thirty-four companies overall have been charged with dumping solid waste at the hilltop site. The other 32 have pleaded not guilty to the charges.

Raymond Escorpizo wins scholarship

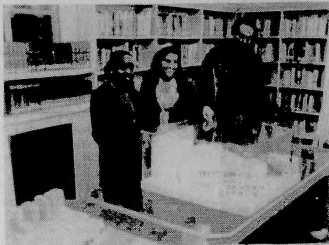
Twenty-two Seton Hall Prep students, representing thirteen percent of the senior class, have been selected to participate in the 1993-94 Garden State Scholarship Program.

Belleville resident, Raymond Escorpizo, son of Mr. and Mrs. Roger Escorpizo, has been designated an Edward J. Bloustein Dis-

tinguished Scholar. The designation carries with it an annual scholarship of \$1,000 for each of four years of study at a New Jersey college or university.

Escorpizo, who had previously been named a National Merit Scholarship Semi Finalist, is a graduate of Holy Family School, Nutley.

Book marks



PERFORMING ARTS CENTER — (L-R) Gail L. Thompson, Director of Planning and Design for the New Jersey Performing Arts Center, showing models of the center to Belleville Mayor Marina C. Perna, Deputy Mayor Mario Drozd, and Essex Freeholder James A. Cavanaugh.

Programs for children at Shafter

Holiday Cookless Cooking is scheduled for Dec. 14, 3:15-4 p.m. Children will have the opportunity to decorate holiday treats. Please register by Dec. 4.

Make a Holiday Card is scheduled for Dec. 21, 3:15-4 p.m. Children are invited to bring old greeting cards to this year's holiday craft. These old cards will help children to make new holiday cards.

The Game of Belleville will be played by participants on Dec. 28, beginning at 1:15 p.m. Similar to Monopoly, the Game of Belleville includes buying and selling real estate. Please register before Dec. 23 to make sure accommodations are in place for all children who would like to play.

The Shafter Branch Library is located in School Number 4 at 30 Magnolia Street in Silver Lake. The Branch Library is open Monday through Friday, 1 to 4 p.m. The Shafter Branch Library is managed by Fred Lewis and can be reached at 450-3438.

Performing Arts Center

The Essex County Conference of Mayors recently met at the Belleville Public Library at the invitation of Belleville Mayor Marina C. Perna. The meeting included a presentation on the progress of the New Jersey Performing Arts Center to be built in Newark. Gail L. Thompson, Director of Planning and Design for the Arts Center detailed the progress and objectives of this major urban project. Thompson's presentation included an opportunity for the assembled mayors to see the architectural models of the Performing Arts Center, on display in the Carnegie Room of the Belleville Public Library.

Earth Care workshops set

The Youth Environmental Society and Montclair State's Conservation Club are sponsoring Earth Care workshops Dec. 4 from 9 a.m. to 2 p.m. in the Student Center on campus.

These free workshops, which are open to the public, are geared toward high school students and teachers. Workshop titles include "The Good, The Bad and The Ugly," "Your School and a Haven for Wildlife," and many more.

Registration information may be obtained by calling the Conservation Club at (201) 893-5102.

Montclair State is located at the intersection of Valley Road and Normal Avenue in Upper Montclair.

JCSC lists honor students

Thirty-five Essex County residents were among the Jersey City State College students named to the Dean's List for the 1992 spring semester, it was announced by Dr. Marco Cirincione, dean of students. Students on the Dean's List attained a semester average of 3.5 or higher.

Belleville students are Prabhath Alwis, Lee Kazista, Stephen Roe, Richard Triano, Scott Wentworth and Antonia Zangari.

Bella Casa Caterers

On and Off Premise Catering

ANY SIZE **Delivered to ANY BUDGET**
Any Location
On Premise • Recommended Up To 200
Guests • Weddings • Birthdays • Graduations •
Office Parties, etc.

FREE Tray of food
valued at \$32.95 with
\$70.00 order and over
w/this Coupon
offer expires 12/31/92

Special Buffet

\$5.95 pp

11:00 a.m. - 12:00 p.m.

201-450-0602

1-800-450-0602

2 ACME STREET BELLEVILLE

W. 5th Street - 1/2 mi. S. of 1st Ave. E.

After 5:00 p.m. 201-450-0602

Films at the Library

Dec. 3: The film, A Christmas Carol, will be shown at 1 p.m. This classic tale from Charles Dickens will run approximately 90 minutes.

Dec. 10: The film, It's A Wonderful Life, will be shown. This masterpiece stars James Stewart and Donna Reed, directed by Frank Capra.

Dec. 17: The film, White Christmas, will be shown. Bing Crosby and Rosemary Clooney star in this delightful holiday romp with music, dance and clowning for the whole family.

Holiday crafts for children

The following holiday programs for children will take place in the James J. Cozzarelli Jr. Children's Room, during December: Make Holiday Cards, Dec. 5 at 10:30 a.m.; Make a Holiday Decoration, Dec. 11 at 3:30 p.m.; Secret Holiday Movie, Dec. 12 at 2 p.m.; Make a Holiday Gift, Dec. 19 at 10:30 a.m.; Secret Movie, Dec. 26 at 2 p.m.

All programs are free and open to the public, though the library requests that all children under 8 years of age be accompanied by an adult.

Act One Holiday Program

Act One Presentations will offer its Scrapbook of Christmas and Chanukah Around the World at the Main Library on Dec. 15 at 1 p.m. This holiday program will feature songs and sketches for both Christmas and Chanukah.

Act One Presentations has performed at the library before and was very well received. The Sketchbook promises to be great fun for all participants, with songs, refreshments, surprises, and a holiday trivia game.

Admission is free. The Act One Presentations performance is partially funded by the Friends of the Belleville Library.

Christmas Mission Project

Purchase Your Tree At

Montgomery Presbyterian Church

638 Mill Street, Belleville



TREES
FRESH CUT
Priced Less
Than Our
Competitors

Call Church Office
For Daily Hours
759-7414

Tell Your
Neighbors!

Rear Parking Area at Little League Field

Attention Howard Savings Bank Customers

Is your bank cutting interest rates?

The strongest commercial bank in New Jersey
Gives you the Highest Rate

18 MONTH CD

4.27% 4.15%

ANNUAL YIELD

ANNUAL RATE

COMPOUNDED CONTINUOUSLY

Interest compounded continuously. Rate quoted as of publication date and is subject to change without notice. There may be withdrawal penalties for early withdrawals. Minimum \$1,000.

More Banking Hours Than Any Other Bank

Belleville
Corner Main & Joralemon/
Grand Union Shopping Ctr.
751-1001
Hours
Daily 9-7
Saturday 10-4

Nutley
Corner Franklin & Veeland Aves.
661-0300
Hours
Daily 9-4
Thurs. & Fri. 9-7
Saturday 10-1

THE TRUST COMPANY

OF NEW JERSEY

The Bank with Heart since 1896

40 Branches in Bergen, Essex, Hudson, Middlesex, Monmouth, Morris, Passaic and Somerset Counties
Assets \$2 Billion • Executive Offices: 35 Journal Square, Jersey City, N.J. • Member F.D.I.C.



PARTNERS IN PERFECTION: THE ROLEX ROTOR AND THE OYSTER PERPETUAL

At the heart of the handcrafted Rolex is its self winding device: the Rolex-patented rotor. An integral element in a world-renowned time measurement system, the rotor converts wrist motion to a Rolex power reserve giving life to the watch mechanism. The total result is dependable year in and year out performance from all Rolex Oyster Perpetual timepieces, such as the Oyster Perpetual Datejust in 18 kt. gold with matching Jubilee bracelet, pressure-proof down to 330 feet.

Only at your Official Rolex Jeweler

Corbo Jewelers
The Corbo Family
A tradition in the jewelry

Brick Plaza, Bricktown (908) 477-5232 • Bloomfield Ave. Clifton (201) 777-1535
Bergen Mall, Paramus (201) 845-5300 • Park Ave. Rutherford (201) 438-4454
Rockaway Town Square Mall, Rockaway (201) 328-6200
Cross County Shopping Center, Yorkers (914) 423-4300
Ocean County Mall (908) 240-6110

ROLEX

ROLEX

ROLEX

ROLEX

ROLEX

ROLEX

ROLEX

ROLEX

ROLEX

ROLEX

ROLEX

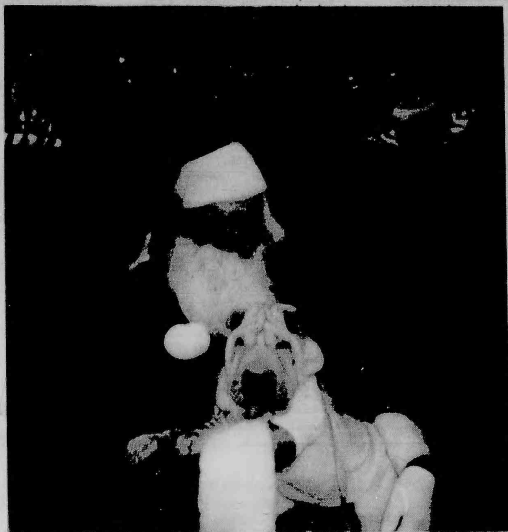
ROLEX

ROLEX

ROLEX

ROLEX

ROLEX



The "real" Santa is appearing at State Fair Christmas Outlet, 229 Main Street, Belleville. Have your photo taken with Santa Fridays 3pm-8pm, Saturdays 11am-7pm, Sundays 11am-6pm. Please call for exact times for the day of your visit. (Dog not included, but feel free to bring your own pet)

Department of Health activities for December

Dec. 1 - Food Stamps 450-3380; WIC Program 9 a.m.-3 p.m.; Child Health Conference
Dec. 2 - Medical Clinic 9 a.m.-1 p.m.; Hypertension screening
Dec. 3 - WIC Program 9 a.m.-3 p.m.; Cholesterol Screening
Dec. 4 - Dental Clinic for school children - call for appointment
Dec. 7 - Podiatry Clinic
Dec. 8 - Food Stamps 450-3380; WIC Program 9 a.m.-3 p.m.; Child Health Conference
Dec. 9 - Medical Clinic 9 a.m.-1 p.m.; Hypertension Screening; Blood Sugar Testing, Fasting Required
Dec. 10 - WIC Program 9 a.m.-3 p.m.; Cholesterol Screening
Dec. 11 - Senior citizens free bus program - call for schedule 450-3402
Dec. 14 - CHC update of standards-Nsg. service & NJ dept of health
Dec. 15 - Food stamps 450-3380; Child Health Conference; WIC Program 9 a.m.-3 p.m.
Dec. 16 - Medical Clinic 9 a.m.-1 p.m.; Hypertension Screening
Dec. 17 - WIC Program 9 a.m.-3 p.m.; Cholesterol Screening
Dec. 18 - Dial-a-Ride Service for info call for appt one day in advance 450-3402
Dec. 21 - Home Energy Assistance Program 450-3380
Dec. 22 - Food Stamps 450-3380; Child Health Conference; WIC Program 9 a.m.-3 p.m.
Dec. 23 - Medical Clinic 9 a.m.-1 p.m.; Hypertension Screening

Dec. 24 - Health Care Program for Belleville residents - limited financial income eligible to receive 25% discount on services
Dec. 25 - Holiday
Dec. 28 - Medicare Benefits-assistance in filing - call Clara Maass Hosp. 450-2000-ask for S.H.I.P. Assistance
Dec. 29 - Food Stamps 450-3380; Child Health Conference; WIC Program 9 a.m.-3 p.m.
Dec. 30 - Medical Clinic 9 a.m.-1 p.m.; Hypertension Screening
Dec. 31 - New Year's Eve

The Immigrant Experience

Part 8

By Michael Rosamilia

Continued from last week's issue

Chapter VI CONCLUSION

The problem of the second-generation Italian-American requires a sympathetic understanding of the possible disorganization which may result from the conflict of cultures. "The immigrant coming to America was born into customs that were so old that they were no longer questioned. For the first generation these customs have become doctrines of welfare and a guide to correct living. Then in America their children question the desirability of such standards and customs. As the second generation becomes disorganized, the immigrant parents think of the American culture as something pernicious, and Americans think of the disorganization as evidence that the immigrants are undesirable. Neither see it as a matter of conflict of cultures which inevitably leads to disorganization. The people who reach these conclusions, whether American or foreign, do not understand human nature and the process which it develops. They do not realize the crisis situation that results for the younger generation who find it difficult to acquire a world in which to live."

What of the classroom teacher who is faced with a roomful of children from different cultural backgrounds? How does she fulfill her responsibility for developing security; creating a feeling of in-

dividual importance in the child; and contribute toward supplying each of the members of her class with the ability to meet life situations?

The teacher must be familiar with their cultural backgrounds and realize that the process of assimilation is necessarily a slow one. It is not a simple process of forcing a child to disassociate himself from Italian cultural traits to make room for American cultural behavior. Just as in all other successful teaching, the adjustment must be made in terms of their past experiences, and some of their culture must be retained to prevent conflict.

Another thing must be clear to the teacher. When dealing with children who have different backgrounds, there is no uniform approach to all individuals. What may be a perfect solution in one case is likely to lead toward disorganization in another. She must be familiar with, and be able to recognize, the rebel, the in-group, and apathetic reactions, and make the child feel that she has an appreciation for the accompanying conflict.

The rebel will, in the long run, meet with the most success in the American group, while the in-group will receive the most immediate rewards in the Italian group.

Is either of these a desirable outcome? Can not the teacher work slowly toward giving the rebel a better appreciation of the Italian cultural heritage to decrease the conflict with the family? At the same time, the in-group requires a gradual infusion of American behavior without abandoning completely his current tendencies. The apathetic presents the least serious problem because he has come closer than any toward developing a dual behavior, each contingent upon the situation in which he finds himself.

In all cases, the teacher should recognize the absence of parental guidance and must be alert to filling the void when her advice is needed. She is not prepared to do

this, the guidance is likely to be sought in less healthy surroundings.

While partially providing for the cultural conflict and absence of parental guidance, it must be remembered that another important area is to be considered. "The transition from one culture to another, and from one personality to another, is a process that requires not only time but demands the cooperation of both groups." To assure further the success of her undertaking the teacher must develop in the native-American group an appreciation of all people, whatever their background. Only in this way can the second-generation American be assured of the rewards which come from membership in the American society. He must be made to feel that the fruits of his efforts will be full acceptance by the American group. It is not enough to feel that education, in itself, is a cure-all, especially since we find many people in the more educated portions of the world who have not rid themselves of prejudice.

There is ample reward for the teacher. In addition to her contribution toward assimilation of all groups, she will find a lessening of her discipline problems. Another thing to consider is that, "While the marginal man creates problems, particularly when he becomes disorganized and demoralized, yet, on the other hand, he makes valuable contributions. His very hypersensitivity makes him a keener observer than the complacent and self-satisfied native. He very often becomes an effective critic of the shallowness, hypocrisy, and inconsistencies in American life."

Herein lies the weapon for additional use of an only partially-tapped resource toward national unity and a better America. As long as persons of all nationalities have helped make America, and been called upon to defend it, they should share equally in participation and the rewards which our country has to offer. This is, as I see it, the democratic ideal.

ART GALLERIES
ROYALE
500 STUYVESANT AVE.
LYNDHURST, N.J.
438-3075

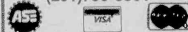
OIL PAINTINGS
Large Selection On Display
Largest Gallery in New Jersey
Lithographs & Prints
Photos Painted on Canvas
Stock & Custom Frames
Complete Framing Department

**A.S.E. CERTIFIED
BRAKE SPECIALIST**

**Ol' Betsy
Auto Repairs**

Over 25 Years Experience
• Snow Plowing
• Auto Repairs
• Lifetime Brakes
Lifetime Guarantee on Brakes

504 Washington Ave.
Belleville, N.J.
(201)759-5561



**Tired Of Watching
The Same Old
Soap Opera?**



Come Clean With Us!

Tune in to the best full service/ self-service laundromat in town.

We do laundry by the pound!

• Clean, Brightly Lit, Safe
• Attended At All Times
• Modern, Well-Maintained Machines
• Divergent Machines For Comforters & Drapes
• Plenty Of Free Parking
• Wash-Dry-Fold Service

OPEN: MON-FRI, 8am-9pm
SAT 7am-6pm, SUN, 7am-5pm
**Nutley Clean Scene
Laundromat**

104 Franklin Ave, Nutley
235-9691

Betsy Complimentary Coffee Sat. & Sun.

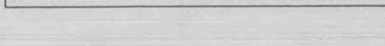
WIN WIN WIN WIN WIN WIN WIN

**WIN A HOLIDAY FOOD BASKET
CLIP OUT COUPON BELOW
AND DEPOSIT AT**

**THE C.H.A.S. CENTER
527 JORALEMON ST.
BELLEVILLE, NJ**

**WHERE DRAWING WILL BE HELD
AND REFRESHMENTS SERVED
ON DEC. 15TH AT 7:30 PM**

NAME _____
ADDRESS _____
PHONE _____



**MACE BROTHERS
"Fine Furniture"**

STARTING NOVEMBER 27th

Will Offer



**3%
Sales
Tax**

**506 Kearny Avenue • Kearny
998-1000**

JOSEPH RICCIARDI PAINTS



**Paint
like a pro
indoors
and out**

No runs, only
no drips, \$2.50
no errors!

KRYLON
Offer good thru 12/15/92 1 PM.

Give those small jobs a professional look with Krylon spray paints. Our no-mess quick-dry paints, make running and dripping things of the past. One coat covers most surfaces. Choose from a wide variety of decorator colors. You're a pro with Krylon.

**JOSEPH
RICCIARDI
PAINTS**

We color your world a little bit brighter

ONE GREAT LOCATION: 51 WASHINGTON AVE., NUTLEY, N.J. 07110-2280
Free parking. Free delivery. Open daily 7 AM - 6 PM, Sat. 7 AM - 6 PM, Sun. 9 AM - 1 PM

STEFANELLI CHIROPRACTIC CENTER, INC.

TOY DRIVE



Dr. Paul Stefanelli Chiropractor

**WILL OFFER HIS SERVICES AT NO CHARGE TO ANY PATIENT
IN EXCHANGE FOR A NEW OR USED TOY TO BE DONATED TO
NEEDY CHILDREN FOR CHRISTMAS**

**ONE DAY ONLY!! 9 AM TILL 8 PM
DECEMBER 14, 1992**

**567 Franklin Avenue • Belleville, NJ • 450-1003
CALL-MAKE AN APPOINTMENT
EVERYONE IS WELCOME**



Diamond Sale!
.76
Round
~~**\$2278**~~
\$1,199

Diamonds!



**Best Quality, Best Selection,
 Best Price...GUARANTEED!**

Plus, free Matching 14-Karat Gold Wedding Band with purchase of any size engagement diamond!

Guarantees

Every diamond we sell comes with these written guarantees:

(1.) You can return any diamond for any reason for 10 days- no questions asked. (2.) Your diamond will appraise for 50% more than you paid or money back. (3.) We guarantee you cannot buy a diamond of comparable quality for less, anywhere.

Quality

Our expert gemologists individually examine hundreds of diamonds each week at the world diamond markets. Then, only those deemed the best for size, cut, color and clarity are purchased for our inventory. Thus, you are assured of getting the very highest quality diamond your money can buy.

Selection

Diamonds are our only business. We offer you more diamonds, in more price ranges than anyone. Our stunning inventory includes the full range of diamonds. Color, cut, size and clarity that is suitable is in our inventory. Don't just buy any diamond. Come to Capital. See a whole bunch of diamonds. Then, pick the one you want.

Price

We buy our diamonds directly from the world market. We pay the same low prices that New York Diamond District dealers pay. And, we pass the services on to you. This means you get more diamond for your money. You're happy. You're happy. You tell your friends about Capital Diamond. That makes us happy.

Our finest diamonds, including GIA Certified diamonds, are on sale this week and next. This is just a sample of the over 500 diamonds that are specially priced. Plus, we guarantee your diamond will appraise for 40% to 70% more than you paid or your money back. And, we offer Instant Financing!

30% Off NYC Diamond District Prices!

Carat Size	Cut	Retail Value	This Week	You Save	Carat Size	Cut	Retail Value	This Week	You Save
.25	R	\$ 629	\$ 349	\$ 280	.70	P	\$ 2,129	\$ 1,199	\$ 930
.30	R	879	499	380	.71	R	2,149	1,199	950
.32	M	919	499	420	.73	P	2,219	1,199	1,020
.33	P	959	499	460	.76	R	2,278	1,199	1,080
.40	R	1,069	599	470	.71	M	2,489	1,399	1,090
.50	R	1,399	799	600	.85	R	2,529	1,399	1,130
.56	M	1,469	799	670	.85	P	2,619	1,399	1,220
.58	P	1,529	799	730	.86	M	2,729	1,499	1,230
.67	R	1,749	999	750	.90	R	2,759	1,499	1,260
.68	P	1,829	999	830	1.01	P	2,879	1,599	1,280
.68	P	1,919	999	920	1.01	P	2,929	1,599	1,330



Capital Diamond
 IMPORTERS AND BROKERS

* Bloomfield.....554 Bloomfield Ave.....(201) 748-5021
 * Paramus.....1 Sears Drive.....(201) 599-0340
 * Parsippany.....1130 Route 46.....(201) 299-2969
 * Woodbridge.....517 Route 1.....(908) 750-5010

R=Round, M=Marquise, O=Oval, P=Pear

**MERRY
 CHRISTMAS**

EVENTS IN THE AREA

Fairs, flea markets, rummage...

Every Friday night flea market, 4 to 10 p.m., Boy's Club, 156 Schuyler Ave., Kearny.

Christmas fair, 10 a.m. to 4 p.m. Dec. 5, Belleville Reformed Church, Main and Rutgers streets. Refreshments available.

Craft show, sponsored by Nutley Assembly Christian School, 9 a.m. to 4 p.m. Dec. 5, 280 Davey St., Bloomfield.

Annual bolly bazaar, sponsored by Episcopal Church Women, 9:30 a.m. to 4 p.m., Dec. 5, Church of the Advent, 498 Watchung Ave., Bloomfield. Free admission. Handcrafted decorative and gift items, plants and arrangements, bake table.

Annual holiday boutique, 9 a.m. to 1 p.m. Dec. 5, Fairview School multipurpose room, Bloomfield. Handcrafted and manufactured gift items, refreshments.

Giant weekend indoor flea market, 4 to 10 p.m. Dec. 5 and 9 a.m. to 5 p.m. Dec. 6, North Arlington High School, 222 Ridge Road. Over 100 quality vendors.

Holiday bazaar, 10 a.m. to 4 p.m. Dec. 5, Carteret School, Bloomfield. Visit with Santa, crafts, gifts, refreshments.

Santa sale, 9 a.m. to 8 p.m. Dec. 10, Radcliffe School, 379 Bloomfield Ave., Nutley. Open to the public 3 to 8 p.m. Holiday shopping for children and adults.

Fundraisers...

Christmas sale and luncheon, sponsored by Evening Membership Dept., 11:30 a.m. to 1 p.m. Dec. 4, Woman's Club of Nutley, 216 Chestnut St. Menu: pot roast, mashed potatoes, vegetable, tossed salad, roll and butter, dessert and coffee. \$4.75. For reservations, call 667-1161 or 667-7120.

Chinese auction, 7:30 p.m. Dec. 4, St. John's Episcopal Church, 215 Lafayette Ave., Passaic. \$3. Refreshments. Doors open at 7 p.m.

3rd annual Susan Arms Foundation Tree of Life telethon, Dec. 4, 5, emanating from channels 32 and 35, Bloomfield Children's Library, 90 Broad St. Merchandise also on sale at studio.

"No Toys for Sale", a children's play for 3 and up, 11 a.m. Studio Playhouse, 14 Alvin Place, Upper Montclair. \$5. Call 338-7766 for information. Order tickets early, limited seating, no strollers. Sponsored by The Woman's Service Corp. of Bloomfield and Union Congregational Weekday Nursery School.

Santa Claus pancake breakfast, 8 a.m. to 1 p.m., Dec. 13, Nutley Masonic Lodge, 175 Chestnut St. Pancakes, sausage, juice, milk, tea or coffee. \$5 adults, \$3.50 children under 12. Co-sponsored by Nutley Fire Dept. and Nutley Civic Celebrations Committee. Proceeds to Easter egg hunt, 4th of July races, Santa Claus ride.

Breakfast with Santa, 9:30 a.m. Dec. 19, St. Thomas the Apostle School, 60 Byrd Ave., Bloomfield. \$6.50. Reservations required. Call 338-8505. Pictures with Santa, games, magic show, gift from Santa, etc.

Holiday music festival, 3 p.m. Dec. 20, Fewsmith Memorial Presbyterian Church, 444 Union Ave., Belleville. \$8 with reception following. Featuring LaTerry Butler, keyboardist and Tammeylaine Butler, soloist. For tickets, call the church office at 759-6869.

New Year's Eve dinner dance, St. Clare's Parish Center, 69 Allwood Road, Clifton. \$25 per person included hot and cold buffet. Early reservations requested. Call 779-7545, 779-1422 or 773-8211.

Belleville Knights of Columbus New Year's Eve party, 9 p.m. to 2. Open bar, Kevin McCordle band. Bring your own food, cake and coffee at 1 a.m. \$15. For reservations, call 759-9656 or 759-5196.

1993 Entertainment books, \$40. Dystonia Medical Research Foundation, 661-3978 or 956-5351; Good Shepherd Academy, 667-2049 or 667-5081; Sisterhood of Congregation Ahavath Achim, 759-9394; St. Thomas the Apostle Junior H.S. Youth Group, 338-6822; Nutley Lions Club auxiliary, 661-3257; Grace Church, 235-1177.

For singles only...

C.O.P.O. (Christian One Partner Organization), open house Christmas party, 8 p.m. Dec. 5, Our Lady of the Blessed Sacrament Church, Roseland. Non-sectarian for widows and widowers.

Bethany O.N.E.S., Christmas party, 12:30 p.m. Dec. 20, Bethany Presbyterian Church, Bloomfield. Donation: \$5 or food item of equal value for luncheon. To participate in gift exchange, bring \$2 wrapped gift appropriate for woman or man.

ACTS, a young adult Catholic singles group for ages 21 to 35. For information, call 759-9194.

Solo Singles, (40 plus), 6:30 p.m. Sundays, Central Presbyterian Church, St. Morris Ave., Summit. \$2. Bridge, 7:15 p.m. 1st and 3rd Thursdays. \$3. For information, 908-665-2686 or 908-766-1839 6 to 9 p.m. only.

Mix and Mingle, for separated, widowed, divorced men and women 45 plus, 7 p.m. second Tuesdays, Parsippany library, 292 Parsippany Road. \$3. For information, 887-7833 or 335-7068.

Meetings...

Belleville AARP Chapter 2051, 1 p.m. Dec. 3, Fewsmith Memorial Presbyterian Church, 444 Union Ave. Christmas musical program by 5th and 6th grade students.

REACH, 7:45 p.m. Dec. 3, Bloomfield Middle School library, 60 Huck Rd., Bloomfield. "What Kids Need from Parents," by psychologist Dr. William R. Lutz. All adults interested in gifted children and their education invited. Free. For information, call 748-1194.

Nutley AARP Chapter, Christmas party, noon to 4 p.m. Dec. 3, The Fairmont, Cedar Grove. Bus reservations to Madelyn Williamson, 667-4457. Bus leaves 44 Park Ave. at 11:30 a.m. with a stop at Elks. Next chapter meeting: Jan. 14.

Major Joseph Bloomfield Chapter, National Society Daughters of the American Revolution, Christmas tea and guest day, 12:30 p.m. Dec. 7, Bloomfield Civic Center, 84 Broad St. Entertainment by Montclair YMCA 60-Plus Choir. Christmas sale tables featuring handmade items and baked goods. Members are encouraged to bring guests.

Ladies auxiliary Stuart E. Edgar Post 493, VFW, Christmas party, 7 p.m. Dec. 8, Meyer's Restaurant, 227 Franklin Ave., Nutley. Grab bag. Membership open. Write to 376 Chestnut St., Nutley, 07110.

Roche Retirees, Christmas party Dec. 12, Wayne Manor. Next regular meeting: Jan. 9, 1993. Board at 11:30 p.m., assembly at 1 p.m. Call hotline for program info. (225-5200).

Women's Auxiliary Lions Club of Nutley, seeking new members. 7 p.m. first Thursday at Meyer's Bakery, Nutley. For more information, call Betty Lazar at 667-9127 or Louise Beck at 661-2906.

Belleville Kiwanis Club, 6:30 p.m. Thursdays, Branch Brook Manor, Washington Ave., Belleville. For membership information, call Nino Bucciarelli at 751-2101 or Vinnie Sorrentino at 759-6475.

Court Gratia, Court 751, CDA, Nutley Armets Post 30, 184 Park Ave. Dec. 7: luncheon, noon to 1:30 p.m., cake sale, Christmas sale. Brief meeting same night; Dec. 21: Christmas party.

St. Mary's Youth Group, 8 to 10 p.m. Thursday nights, St. Mary's School gym, Msgr. Owens Place, Nutley. For those in the 8th grade or older.

Tri-County Camera Club, 8 p.m. Tuesdays, Nutley Historical Museum, 65 Church St. For more information, call 761-5591 or 667-3740. Dec. 5: black and white and color slide competition; Dec. 12: nature slide competition and business meeting. Dec. 19: program, "the Impractical Photographer," large format, black and white; Dec. 26: workshop, "Models."

American Legion Auxiliary Nutley Unit 70, 8 p.m., second Monday (except Jan.), Nutley post home, 45 Franklin Ave.

Essex Salon Eight of the Eight and Forty, 8 p.m. third Monday, 45 Franklin Ave., Nutley.

Essex County American Legion auxiliary, 8 p.m. second Thursday (except Jan.), 45 Franklin Ave., Nutley.

Support Groups...

Narcotics Anonymous meeting list: **BELLEVILLE**: Monday, 8 p.m., Fewsmith Presbyterian Church, Union Ave. and Little St. Openbook discussion meeting; Tuesday, 8 p.m., Clara Maass Medical Center, 1 Franklin Ave., Branch Brook Room, Education Center. Men's meeting. Open discussion; Thursday, 8 p.m., Fewsmith Presbyterian Church, Union Ave. and Little St. Openbook discussion meeting; Friday, 8 p.m., St. Peter's Church, rear basement, Williams St. Open discussion. **NUTLEY**: Monday, 7:30 p.m., St. Paul's Congregational Church, Franklin Ave. and St. Paul's Place. Closed speaker discussion meeting. Open to addicts and those who think they have a problem with drugs; Tuesday, 7:30 p.m., Grace Episcopal Church, 200 Highfield Lane. Women's meeting. Topic meeting open discussion; Wednesday, 8 p.m., Grace Episcopal. Closed speaker discussion. Open to addicts and those who think they have a problem with drugs.

Victims/family survivors of auto related crashes, sponsored by Mothers Against Drunk Drivers, second and fourth Mondays, St. Mark's Church, 45 Main St., West Orange. For information, call 344-4329.

Anorexia, nervosa, bulimia, compulsive eating problems. For information, call 1-800-624-2268.

Drug addicts, 7:30 p.m. Wednesdays, Christian Faith Center, 393 Washington Ave., Belleville.

Catastrophic illness support group, 6 to 7:30 p.m. first and third Tuesdays. The Hospice, 34 Label St., Montclair. Separate sessions for families and patients. For more information, call 783-7879.

New Jersey Chapter of NAAFA (National Association to Advance Fat Acceptance, social events, human rights information, monthly newsletter. For more information, write P.O. Box 110203, Nutley, 07110 or call 667-2957.

Overeaters Anonymous, self-help group for compulsive overeaters or people with eating disorders, 8 p.m. Tuesdays, Presbyterian Church on the Green Parish House, Broad St., Bloomfield (7:30 to 9 p.m.); Wednesdays, Christ Church, Park and Bloomfield avenues (opposite Grand Union), Bloomfield (8 p.m.). For more information, call 746-4658; Thursdays, Grace Episcopal Church, 200 Highfield Lane, Nutley (7 p.m.).

Living With Cancer, for cancer patients and their families, 7 to 9 p.m. third Wednesdays, Mountainside Hospital, Montclair. 429-6140 or 429-6128.

Recovery Inc., a community mental health self-help group for persons who suffer from nervous symptoms and fears, 7:30 p.m. Wednesdays, Parks Dept., 44 Park Ave., Nutley. For free literature, call (908) 766-7466.

Make Today Count, a support group for patients and families dealing with cancer and other life-threatening illnesses, 7 p.m. Mondays, Clara Maass Medical Center, Belleville, 450-2230.

UNHOOKED, for drug and alcohol abuse. Call 643-5050 noon to 7 p.m. Monday through Friday for New Jersey treatment and referrals and substance abuse information. Confidential.

POISON INFORMATION, 1-800-962-1253.

SOCIAL SECURITY 24-hour toll free number, 1-800-772-1213. Live operators on duty 7 a.m. to 7 p.m. Monday through Friday. Other times, leave number. Someone will call you back.

Cancer Response System, 1-800-227-2345, 9 a.m. to 5 p.m. Monday through Friday.

TEEN HOTLINE, a nationwide toll free hotline for homeless and troubled teens and families, 1-800-999-9999.

SHHH (Self Help for Hard of Hearing) 7:30 p.m. Dec. 1, Montclair Community Hospital, 120 Harrison Ave., Montclair. "How We Cope — Assistive Devices for Daily Living." Free and open to the public. Family members invited also.

Other events...

One night seminars, Nutley Adult School, 300 Franklin Ave. For information, call 667-2525. Dec. 3, 6:30 to 9 p.m., dried flower arranging. \$17 includes materials.

Free health screenings, Montclair Community Hospital, 120 Harrison Ave., Montclair. Appointments mandatory. Call 744-7300 ext. 4296, 10 a.m. to 2 p.m. Monday through Friday. Dec. 5: eye screening, Dr. Origliani, skin cancer, Dr. Bergamo; Dec. 18: knee screening, Dr. Matthews; Dec. 19: gynecological, Dr. Ehrlich.

Annual Christmas party, sponsored by Rosary Altar Society, Sacred Heart Cathedral, Newark, 7:30 p.m. Dec. 4, Venustus Restaurant. \$30 includes dinner, wine, soda, live entertainment. For tickets, call 484-4600 or 565-5849.

Annual holiday concert, by Bloomfield Civic Band, Civic Chorus and Youth Band, 3 p.m. Dec. 6, Bloomfield Middle School, Huck Road. Suggested donation: \$2.

S.A.T. strategy workshop, sponsored by REACHY in co-operation with Bloomfield High School, 7:30 to 9 p.m. Dec. 10, Bloomfield High School auditorium, 160 Broad St. Free material, information, in-depth presentation by Kaplan Test Prep.

CPR and first aid classes, sponsored by Nutley Chapter, American Red Cross, 169 Chestnut St. Pre-registration required. Call AnnMarie at 667-3818 9 a.m. to noon and 1 to 4 p.m.

Annual winter vacation for Cerebral Palsy Center's Adult Travelers, to Atlanta, Ga., Dec. 26-31, departing Newark International Airport. Tours, sightseeing, double-room occupancy, admissions and three meals per day. For cost and more information, call 751-0200.

Class reunions...

Bloomfield 1967, needs volunteers to organize reunion. Call Joyce at 743-1901 or Nikki at 677-9200, ext. 107.

Bloomfield 1963, 1-800-22-CLASS.

Bloomfield 1972, 1-800-22-CLASS.

Bloomfield June 1943, Helen Flannery, ob Bloomfield High School, 160 Broad St., Bloomfield, 07003.

Nutley 1983, November 1993. For information, call Danny Geltrude, 661-1636; Ellen Travers, 661-2815; Jodi Mastrorandi, 772-9665; Jeanette Paterno, (908) 852-3888; Joy Toive, 284-1949 or Sandy Paterno, 661-0664.

West Side, Newark, 1967, Jan. 23, Westwood, Garwood. WSHS '67, P.O. Box 694, So. Plainfield, 07080.

RICHARD NADER'S ORIGINAL

Holiday Reunion Show

TICKETS MAKE GREAT GIFTS

LITTLE ANTHONY
TEARS ON MY PILLOW

LENNY COCO CHIMES
AND THE

THE SHIRELLES
"SOLDIER BOY"

LARRY CHANCE AND THE EARLS
REMEMBER THEM

ACAPPELLA FAVORITES THE TRADITIONS

SPECIAL GUEST STAR LaVern Baker
"JIM DANDY"

EUGENE PITT AND THE JIVE FIVE
MY TRUE STORY

THE KNOCKOUTS
DAN VICTORIANI

THE CLEFTONES
"HEART AND SOUL"

SATURDAY, DEC. 26, 1992 — 8 PM — DAY-AFTER-CHRISTMAS

\$20 A TICKET BUY 2, GET A THIRD FOR \$10! PLUS APPLICABLE SERVICE CHARGE. **RESERVED SEATING THEATER-IN-THE-ROUND**

TICKETS NOW AT THE ARENA BOX OFFICE ★ SHOW INFO 201-935-3900

24 HOUR SHOW INFO 201-936-8533 212-978-4444

Pre-Show Buffet Dinner Available in WINNER'S CLUB REST. Reservations 201-933-8867

The maximum resale premium in accordance with NJ State law is 20% of the ticket price, or \$3.00, whichever is greater.

Psychic Readings
by
Jennifer
Reader + Advisor

Pyramid Readings/Crystal Readings
Tarot cards \$10 Palm Reading \$5
Advice for All Problems
Call for Free Question

\$7.50
Tea Cup Reading **460-0621** Lynchhurst

Dawn Dunscombe wed to Thomas Cueman Jr.

Dawn Marie Dunscombe, daughter of Ruth Dunscombe of Belleville and Michael Dunscombe of Little Meadows, Pa., was married Sept. 6 to Thomas E. Cueman Jr., son of Mr. and Mrs. Thomas Cueman of Nutley.

Rev. Timothy Horgan performed the ceremony in St. Mary's Church, Belleville. A reception followed at Nanina's in the Park, Belleville.

Escorted by her parents, the bride wore an off-the-shoulder silk-faced satin gown fashioned with a scalloped neckline and accented with pearls. A pearl crown held her veil and she carried a cascade of ivy, heather, lily of the valley, tulips, roses and cymbidium orchids.

Cheryl Dunscombe of Belleville was her sister's maid of honor. Bridesmaids included Sally Gialanella of Bloomfield, Margherita Kearns of Totowa, Jackie Flaherty of Clifton and Lori Cove of Miami-Kristen Cove, Fla. Flower girls were Wendy Holland and Renee Gialanella.

They were attired in ivory taffeta gowns fashioned with sweetheart

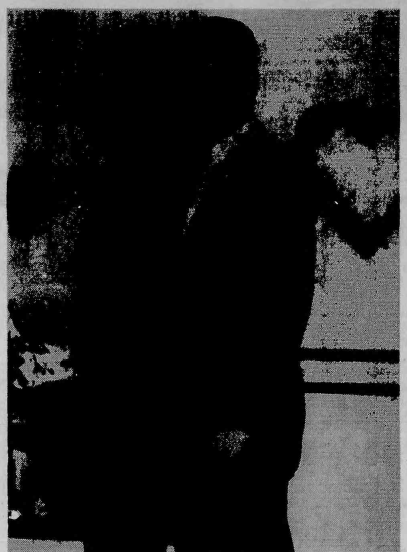
necklines, puffed cap sleeves and sequined bodices. They carried ivy, heather, Queen Anne's lace, alstroemeria, pink roses and white tulips.

The flower girls' dresses featured ivory taffeta bodices and ankle length skirts of ivory tulle. Trimming was of pink satin. They wore wreaths of babies breath and pink sweetheart roses in their hair and carried baskets of pink cymbidium orchids.

Robert Cueman of Nutley served as his brother's best man. Ushering were Frank Gialanella of Bloomfield, Lee Balparda of Melbourne, Fla., John Benedetto of Belleville, Sai Saracchia of Nutley and Keith Sofield of Bloomfield. Ringbearer was Sean Holland.

The bride's mother chose a coral chiffon gown accented with iridescent sequins and pearls. Her wristlet was of coral roses. The groom's mother, in a purple chiffon gown accented with gold, silver and black sequins, had a wristlet of purple roses.

After a honeymoon cruise, the couple is living in Nutley.



Cheri Tillman — Eric Fager

Tillman-Fager troth has been announced

Announcement has been made of the engagement of Cheri Alicia Tillman of Fogelsville, Pa., formerly of Belleville, to Eric John Fager of Allentown, Pa.

The wedding is planned for October 1994.

Miss Tillman, an alumna of Belleville High School and Penn State

University with degrees in genetics and psychology, is a chemical research technician with Peters Perillizers.

Mr. Fager, a graduate of Mansfield University with a degree in criminal justice, is a plumber/electrician.



Mr. and Mrs. Thomas Cueman Jr. — nee Dawn Dunscombe

ADVERTISE!

Dana Albanese bride of Michael Danduone

Dana Louise Albanese, daughter of Sandra Nicastro of Ormond Beach, Fla. and Al Albanese of Bloomfield, became the bride recently of Michael Danduone, son of Mr. and Mrs. Salvatore Danduone of Belleville.

Rev. Francesco performed the ceremony in St. Mary's Church, Nutley. A reception followed at Old Morris Canal Inn, Stanhope.

The bride was escorted by her parents.

Tina Albanese of Nutley was the honor attendant. Bridesmaids included Lisa Albanese of Nutley, Nancy Klepichuk of Carteret, Dawn Resciniti of Little Falls and Toni-Ann Cecere of Glen Ridge. Frank Danduone of Belleville

served as best man. Ushering were Richard Picatilli of Northfield, Bob Dooley of Belleville, Joe Tower of Belleville and Brian Bucher of Nutley.

Mrs. Danduone, an alumna of Belleville High School, is a bookkeeper at Ernst & Young, Lyndhurst.

Mr. Danduone, also a Belleville High School alumnus, is a partner in Pin Stripe City Productions Recording Studio, Belleville and manager of Major Deli & Caterers, Kearny.

The couple honeymooned on a cruise to Bermuda following the May 2 nuptials. They have made their home in Belleville.

SINUS CARE GROUP

State of The Art Treatment For Nasal and Sinus Disease

DIAL 66-SINUS 667-4687

Bruce E. Gordon M.D. Arthur I. Lester M.D.

562 Kingsland St., Nutley 235-1400
6 Franklin Ave., Belleville 759-4005
39 Seeley Ave., Kearny 997-2347

SHOP
CENTRE
STREET
FIRST!!

Nutley's
"One Stop Shopping Place"

• Avellino Bakery
• Centre St. Seafood
• Centre Liquors

Centre Street Seafood

Retail and Wholesale Distributors

94 Centre St. Nutley • 284-1182

FRESH SEAFOOD DELIVERED DAILY

Flounder \$5.99/lb.
Blow Fish Tail \$4.99/lb.

Visit our new Freezer Dept.

Delicious Homemade Products Including:

Stuffed Flounder 3/\$14.50
Stuffed Clams 6/\$4.50
Stuffed Mushrooms 12/\$6.00
Stuffed Shrimp 6/\$9.00

\$5.00 OFF

Place Your Holiday Tray Orders Early!
Shrimp • Salads • Crabmeats

OPEN: MON. & SAT. 9-6 TUE. THRU FRI. 9-7 SUN. 10-2



AVELLINO

Bakery & Pastry Shop

90 Centre St. • Nutley 667-7560

Open: 6am-8pm Holidays 6am-3pm

A Full Line of Genuine Italian & French Pastries

- Napoleon Cakes
- Chocolate Mousse Cakes
- Italian Rum Cakes
- Cannoli Cakes
- Ice Cream Cakes & Logs
- Sweet Pies for the Holidays
- Cakes for all occasions
- Ready made & made to order
- Struffoli
- Christmas Stollen
- Cookie Trays
- Italian Cookies
- Pignoli Cookies
- Heavy & Light Cheese Cakes
- Cream Cheese Pies

FREE DESIGNS ON ALL BIRTHDAY CAKES

25% OFF

on total purchase of any baked goods not to be combined with other offers offer void Dec. 23-24-25-30-31 & Jan. 1, 1993

CENTRE LIQUORS

GRAND OPENING Specials

Specials Good thru Tues. Dec. 8th

Santa Margherita Pinot Grigio \$12.99 750ML	Corvo Red or White \$6.99 750ML	Ruffino Riserva Ducale \$9.99 750ML
Johnnie Walker Black \$16.99 750ML	Bud Light Suitcase \$9.99 24 330ML	Smirnoff 80° \$10.29 1.75L

92 Centre St. • Nutley 661-4990

Open: Mon.-Sat. 10am-10pm Sun. 12pm-5pm

GRAND UNION

BUY ONE, GET ONE FREE!

BUY GET FREE SALE!



Not Less Than 75% Lean
Hot or Sweet Pure Pork

Ground Beef, Italian Sausage or Chicken Breasts

Country Pride - Grade 'A' Fresh Split with Ribs

Your
Choice!

1.19

Lb.

In Pkgs.
of 3-lbs.
or More.



BUY ONE
GET ONE **FREE!**

Get One 1-lb. Box - Regular or Low Salt
Nabisco Ritz Crackers

When you purchase one 1-lb. Box - Nabisco
Ritz Crackers at our regular low price.



BUY ONE
GET ONE **FREE!**

Get One 10-oz. Pkg.
Good Source of Riboflavin, Natural
Fresh Mushrooms

When you purchase one 10-oz. Pkg. - Fresh Natural
Mushrooms at our regular low price.



BUY ONE
GET ONE **FREE!**

Get One 1-Qt. Cont. - Assorted Frozen Flavors
Yogurt or Light Frozen Dessert or
T&W Royal Ice Cream

When you purchase one 1-Qt. Cont.
T&W Royal Ice Cream, Frozen Yogurt or
Light Frozen Dessert at our regular low price.



BUY ONE
GET ONE **FREE!**

Get One 10.5-oz. Bag - Ultra Blend
Chock Full O'Nuts Coffee

When you purchase one 10.5-oz. Bag
Chock Full O'Nuts Ultra Blend
Coffee at our regular low price.



BUY 1-LB.
GET 1-LB. **FREE!**

Get One Lb. - Deli Sliced Fruited & Glazed
Russer's Baked Ham

When you purchase one Lb. - Deli Sliced Fruited &
Glazed Russers's Baked Ham at our regular low price.



BUY ONE
GET ONE **FREE!**

Get One 14.5-oz. Bag - Regular or Ranch (14-oz.)
Eagle Ridged Potato Chips

When you purchase one 14.5-oz. Bag
Regular or Ranch (14-oz.) Eagle Ridged
Potato Chips at our regular low price.

SUPER COUPON

BUY ONE
GET ONE **FREE!**

Get One 6.125-oz. Can - Chunk Light in Oil or Water

**Chicken of the
Sea Light Tuna**

When you purchase one 6.125-oz. Can - Chicken of
the Sea Light Tuna at our regular low price.

With This Coupon And Purchase Of \$5.00 Or More, Good
Nov. 29 Thru Dec. 5, Limit One Coupon Per Family.

GRAND
UNION

SUPER COUPON

1-lb. or Reg. or Diet Sprite, Cherry Cola, Minute Maid Orange,
Seagram's Ginger Ale or Reg. or Caffeine Free Cola (614)

**Coca-Cola Classic
or Diet Coke**

One
2-Lb.
Btl.
Plus Disp.
Where Reg.

89¢

With This Coupon And Purchase Of \$5.00 Or More, Good
Nov. 29 Thru Dec. 5, Limit One Coupon Per Family.

GRAND
UNION

SUPER COUPON

BUY FOUR
GET ONE **FREE!**

Get One 1,000 Sheet Roll - Color or White

**Scottissue
Bath Tissue**

When you purchase one 1,000 Sheet Roll
Scottissue Bath Tissue at our regular low price.

With This Coupon And Purchase Of \$5.00 Or More, Good
Nov. 29 Thru Dec. 5, Limit One Coupon Per Family.

GRAND
UNION

Not Responsible For typographical Errors. We Reserve The Right To Limit Quantities. For Consumer Information or Assistance, Call Toll Free, 1-800-221-1835.
Prices and Offers Effective Sunday, Nov. 29 thru Saturday, Dec. 5, 1992.

Belleville

BUC SHOTS

By Mike Lambert



Let's be perfectly honest.

The Belleville-Nutley game, played last Saturday at Doc Ellis Field, was a phenomenal football game.

Forget the fact that the game finished in a seven all tie. Forget the fact that both Belleville and Nutley had chances to win late in the fourth quarter.

It was a great football game.

Repeat, it was a great football game.

Why? Well, first and foremost, it was a battle between backyard rivals. It was Nutley, getting ready for the Group III, Section II championship (which will be played this weekend at the Oval), owners of a 7-1 record and a phenomenal offense.

It was Belleville, owners of a 3-5 record, a team which played a monstrous schedule all season long and stood up to the challenge quite well. The Buc came into the game with a .500 record (3-3) in the very difficult NNJII Pacific Division, considered by many the toughest in the state this season.

And, don't forget the Buc's two games outside of the conference against top ten powers Bergen Catholic and Randolph. Against Bergen Catholic, the Buc appeared to grab an early lead, only to have a **Ricky Constantino** run called back. Belleville was one of the few teams to hold B.C. to just 14 first half points and stay within 11 points of the number two ranked team until late in the game.

At Randolph, the Buc was within upset range before two late Ram TD's in the fourth quarter boosted Randolph 21-9.

So, last Saturday the Buc and Raiders squared off in the annual game for supposed bragging rights. The teams played 48 minutes of solid football. Both clubs scored one touchdown each. Nutley's score came on a quarterback sneak by Frank DeMaio, set up by a pass from DeMaio to Chris Smith, who turned into Mark Bavaro, circa 1986 after making the catch.

DeMaio while the QB was passing and the throw ended in the arms of John Kuebler, who went untouched, 48 yards into the Raider end zone.

Both defenses were outstanding. Belleville's only sustained drive came late in the fourth quarter when the Buc drove 70 yards behind a good running game.

The key play in the drive came near midfield. Quarterback Mike Mundy went back to pass. The pocket collapsed and as Mundy was about to be sacked, he had the instincts to look behind him and see **Sal Berardi** standing behind him. Mundy pitched the ball to Berardi, who took off down the Belleville sideline and got a first down on the Raider 37.

Belleville got as close as the nine yard line. On third down, head coach John Senesky opted for the field goal. Mundy, the teams excellent place kicker, booted the ball well. The ball definitively had the distance. According to the officials, it went wide left.

The officials were about the only people who ruled the kick wide. Everyone in the stadium, including the OBC-TV announcers said the kick was good. But it wasn't and Nutley had one last shot.

From his own 18, DeMaio threw a Hail Mary pass downfield. A similar pass had worked against Hackensack, giving Nutley a chance to tie the game on the last play of regulation time a few weeks ago. This time, the pass could set up a win.

The ball was tipped and somehow found the hands of Don Sellari, who grabbed the ball and began the jaunt to the Buc end zone. Enter **John Alvarado**, the Buc's all-everything safety, who made an ankle tackle of Sellari at the Belleville 25.

It was only appropriate that Sellari and Alvarado were named MVP's of the game following the final gun.

Anyway, the play set up a last second field goal try by Smith, who was one of the wide receivers attempting to catch DeMaio's last second pass. Smith, an outstanding kicker, got his foot into the ball. The ball took off. The silence in the stadium was deafening.

The ball had the distance, but it lacked the accuracy. Wide right. Game over. Buc and Raiders tie.

So be it.

It was a great football game. It was a great football game.

It was a great game because of the large crowd on hand at Doc Ellis Field. Doc Ellis himself, God rest his soul, would have been thrilled with the crowd turnout.

It was a great game because two classy teams gave it their best. So what if a winner wasn't determined. Next year will be here soon enough and these two schools can try it again.

This game is not about Mike Mundy missing a field goal. It's about Mike Mundy trying to kick the winning field goal. It's about Mike Mundy making a heads up play in the teeth of a tough defense that gave the Buc a chance to win.

This game was about Mike Citarella, playing the best game of his high school career, bar none. This guy was all over the field, on both sides of the ball.

This game was about John Kuebler, doing something that he'll never forget. He scored a TD in the Nutley game.

This game was about John Kuebler's mother, standing by the lockerroom after the game, wearing her sons varsity jacket, number 86 on the sleeve, waiting to congratulate her son.

This game was about assistant coach Joe D'Ambola, telling a disappointed group of Buc fans after the final gun that they did their very best, that they have nothing to hang their heads about.

Anyone who was disappointed with the effort of either team knows nothing about football, or about the true meaning of this game on the high school level.

This game was everything a high school football game was meant to be. It featured high school referees who were so good that you didn't even know they were on the field. Ask any coach in the game, they'll tell you the best officials are the ones you never notice during the course of a game.

And this game was about seniors on both teams that were playing their final game. Well, actually Nutley has one more game this weekend, but it was their final Belleville-Nutley game.

It was about John Alvarado's mom, crying outside the lockerroom because her son high school football career had come to end.

Ten years ago, the Buc defeated Passaic 3-2 in perhaps the best game ever played in the history of Belleville football. If that be the case, last Saturday's game has to rank in the top two.

Once again, it was a great football game.

LAST WEEKS QUIZ

Billy Cook scored the final TD in the 1981 Belleville-Nutley game. Nutley's coach in '81 was **Larry Zache**, who today works on the Belleville coaching staff. The Buc's finished 7-2 in 1981, missing out on the playoffs by 1/2 game.

Bucs, Raiders play 7-7 tie

It was 'THE GAME', Part II

By Mike Lambert

Ten years ago, the Belleville Buc and Passaic Indians played a classic game at then Municipal Stadium. When it was all said and done, the Buc had prevailed 3-2. The game has since taken on epic proportions and is known in these parts simply as **THE GAME**.

Well, ten years later, **THE GAME** has a sequel. And ladies and gentlemen, the **THE GAME II** was just as good as the original.

Last Saturday afternoon at Doc Ellis Field, the Buc and Nutley Raiders played a monster contest. After 48 minutes of tense action, the game ended in a 7-7 tie. It was, indeed, an appropriate ending to a simply marvelous football game.

The tie concluded the Buc season record at 3-5-1. Nutley will take a 7-2 record into this weekend's Group III, Section II championship game with Morris Knolls. By the way, Nutley will host that game on Saturday, starting at 1 p.m. Getting back to last Saturday's game, the tie was the first for Belleville since the 1988 club tied Bloomfield, 6-6, at Foley Field. It was the first tie at Belleville since the 1977 club, known as the Bellboys, knotted Kearny at 14. It was also the first tie in the fabled Belleville-Nutley series in 17 years. Back in 1975, the Bellboys and Raiders played a scoreless tie at the Oval.

"Our kids gave it a great effort," coach John Senesky said. "I give a great deal of credit to (assistant coach) Joe D'Ambola. He made the key defensive calls at the right time. Joe and Gennaro (Russo) did a great job with the defense all season long."

Any time Belleville and Nutley get together on the gridiron, it promises to be intense. On the visitors side, Nutley entered the game with a high powered offense, an offense that was averaging nearly 30 points a contest.

On the other side, the Buc had shown tremendous improvement over the last five games of the season. Much has been said and written about the difficulty of Belleville's schedule this fall. But the Buc has met the challenge with a supreme effort week in and week out and this past Saturday there would be no question as to Belleville's motivation.

The Buc won the toss and moved downfield behind the passing of quarterback Mike Mundy. Mundy completed two passes to senior John Alvarado, the eventual Buccaneer MVP of the game.

Belleville drove to near midfield before the drive stalled. After Nutley was stopped, the Buc had a key opportunity to score when Mundy went back to pass and fired deep to Alvarado, who was wide open. The pass was a little wide and Alvarado was not able to make the catch.

On Nutley's first offensive possession, Belleville linebacker Brian Dena went down with a knee injury. He was unable to return to the game.

"Fortunately, Brian will be okay," Senesky said. "He has a

bruise, but it looks like he avoided a serious injury."

With Dena out, Joe DeRiggi played the remainder of the game at linebacker and played very well.

Nutley quarterback Frank DeMaio found openings in the Belleville defense, but the Buc were able to avoid the big play for most of the first half. However, late in the second quarter, DeMaio converted a long pass to Chris Smith. After catching the ball, Smith picked up ten yards on some very determined running.

After Smith was brought down, Belleville was hit with an unsportsmanlike conduct penalty, giving Nutley the ball at the Buc 12. Three plays later, DeMaio crossed the end zone from the one, giving Nutley the lead. Smith converted the PAT and the Raiders led, 7-0.

Early in the third quarter, the Buc got a key break. Linebacker Mike Citarella hit DeMaio as the Raider quarterback attempted a pass. The ball went right into the hands of defensive end John Kuebler, who ran 48 yards into the Nutley end zone. Mundy converted the PAT and the game was tied at seven.

Nutley took the ensuing kickoff and moved downfield behind the running of Don Sellari and the passing of DeMaio. The Raiders got as close as the Belleville 24, but DeMaio fumbled the snap and John Engdahl recovered for the Buc.

Belleville was not able to move, but the Buccaneer defense denied the Raiders once again. With time running out in the fourth quarter, the Buc took a Nutley punt and began their final drive from its own 30.

Ricky Constantino and Sal Berardi provided solid running. The offensive line of Phil Ayala, Citarella, Robert Dena, Engdahl, Billy Zigmund and Rich Romano did an excellent job of opening holes and giving the running game a chance to execute.

However, it was an innovative play by Mundy which kept the drive alive. On third down near midfield, Mundy rolled out to pass. Two Raider defenders closed in and appeared to have the Buc QB sacked. As Mundy lost his balance he saw Berardi standing next to him and pitched the ball to the sophomore runner. Berardi took off and gained 13 yards to the Nutley 37. Berardi and Alvarado helped to move the ball to the Raider eight. Berardi's last run was around right end and the sophomore almost scored on the play. With a third and goal at the eight and :32 left in the game, Senesky opted to attempt a field goal.

"We wanted to try the field goal on third down because if the snap was bad, we would have had another chance," the coach said. "The field was a little slippery, so we didn't want to take a chance of a fumble or interception."

Mundy's kick had the distance and it appeared to be good, but the official underneath the goal post ruled the ball was just wide and the

game remained tied.

Nutley was not about to go home quietly. On second down, DeMaio threw the ball 50 yards in the air. It was deflected by Buc safety man Brian Harvey and the ball ended up in the hands of Sellari, who almost went all the way for a touchdown. Only an ankle break by Alvarado prevented a Buccaneer disaster.

Sellari went down at the Belleville 25 with 49 left in the game. Smith, a fine field goal kicker, attempted a 42 yard field goal. As was the case with Mundy, the kick had the distance, but it was wide right.

Mundy threw a Hail Mary pass as the final gun sounded, but the ball fell harmlessly at the Nutley 35 and the game ended in a tie.

"Our kids just played one of the best teams in the state and held them to seven points," an emotional D'Ambola said afterward. "Our guys don't have anything to be down about. We did a great job. Nutley has a tremendous football team."

Alvarado and Sellari were selected the MVP's of the game. But there were many heroes on both sides. For Nutley, DeMaio and Smith proved to be a very dangerous passing duo.

For the Buc, Citarella was absolutely phenomenal. The linebacker, playing his last high school game,

was all over the field and made at least 15 tackles.

Berardi continued his development as a varsity running back. Constantino was once again very impressive as a fullback.

DeRiggi did an excellent job at linebacker and Kuebler had a game he'll never forget, scoring Belleville's only touchdown in one of the best games ever played at Doc Ellis Field.

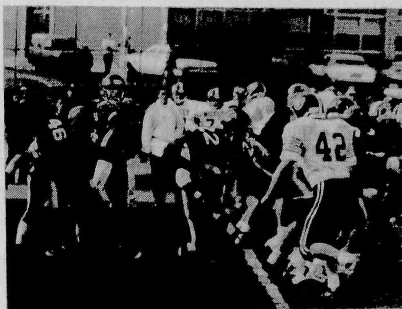
NOTES: Paramus Catholic, as expected, defeated Paramus last Friday and won the NNJII Pacific Division. P.C. finished 6-1 in the league. Hackensack, the only team to defeat P.C. posted a 5-1 record and Nutley finished 4-1-2. St. Joe's was 5-2 and Belleville finished 3-3-1 in the league. Don Bosco, Paramus and Teaneck were all 1-6 in conference play.

Five teams on Belleville's schedule will play this weekend in the state playoffs. Bergen Catholic and Paramus Catholic are in the Parochial semi finals but don't play each other. The two schools are favorites to meet in the Parochial finals next weekend.

Hackensack plays North Bergen for the Group IV, Section I championship. Randolph takes on Union for the Group IV, Section II title and Nutley will battle Morris Knolls for the Group III, Section II crown.



Once again, the Optimist Club awarded MVP trophies to a Buc and Raider following the game. Don Sellari (23) of Nutley and John Alvarado were the recipients of the award this year. This is the ninth straight season that the award has been presented.



Buc quarterback Mike Mundy looks to pass as Ricky Constantino (46) blocks. Running a pass pattern on the play is Sal Berardi (22).

Anderson, Janicelli pace '92 runners

By Mike Lambert

A strong nucleus of underclassmen give cross country coach John Tosato plenty of hope for the 1993 season.

The Buc concluded a good season this fall, with the girls team winning four races and the boys showing marked improvement with a very young squad.

"We had a full girls team for the first time in a number of years," Tosato said. "We had some girls who had varsity experience from last season and some athletes who came out this year and helped right away."

"For the boys, the runners came along steadily and had their best races near the end of the season."

Sophomore **Rachel Anderson** led the entire team by scoring 38 points. Anderson won a medal at the NNJII championships and won four individual races against Bloomfield, Paramus Catholic, Teaneck and University.

The NNJII honored Anderson

by naming her to the second team.

With two years left in her high school cross country career, it's safe to say Anderson has an excellent chance of adding her name to the list of outstanding female runners in BHIS history.

Christine Rykowski was second in team scoring with 34 points. A senior, Rykowski provided outstanding leadership to the team and was a very steady performer.

Like Anderson, Rykowski was named second team, NNJII.

Mike Janicelli concluded the '92 season with 30 points. Also a senior, Janicelli earned high praise from Tosato.

"He was our Iron Man winner," Tosato said. "He ran in all 12 dual races and did a real good job."

Janicelli was named Honorable Mention by the NNJII.

Only a freshman, **Reina Silva** scored 25 points on the varsity level. It's not often that a freshman earns a varsity letter in any sport and it's especially noteworthy in cross

country, which requires a great deal of practice and dedication.

Senior **Kim O'Mara** closed out her fine career with 22 points. Junior **John Carliaga** had 20 points and he should be one of the top runners on the boys team next fall.

A senior, **Jennifer Citarella** tallied 15 points. Citarella is a fine all around athlete who provided consistency on the course this season.

The final runner who earned a varsity letter was **Ketan Chauhan**. Another overclassman, Chauhan scored 14 points.

Junior **Anthony LaRocca** served as team manager this fall. He will be competing for the indoor track team this winter.

There were some young runners who did well this fall and have potential for the future. Junior **Nicole Martelli**, sophomore **Nelson Pazzino** and freshmen **Dan Rykowski**, **Jurival Rodriguez**, **Chris Parada** and **Anthony Marchione** all scored points on the varsity level this past season.

Both the boys and girls faced some very tough competition.

NNJII Pacific Division featured state powers Ridgewood and Immaculate Heart. The county championships also provided some talented competition.

The focus now shifts to the indoor track team, which began practice last Friday. The indoor team will compete mostly in invitational and is a prelude to the outdoor campaign in the fall.

Sports Dinner set

The Belleville Varsity Club will hold its Fall Sports Award Dinner on Dec. 8 at 6:30 p.m. at the Chandelier Restaurant.

The event will honor High School senior athletes who participate in fall sports. To purchase tickets, call Joyce Donnelly at 751-5623 by Dec. 2, or see Grace Worley in the girl's gym. Cost of ticket is \$25.

Gymnastics program

Gymnastics program

The Belleville Recreation Department will again offer its always popular Gymnastics program for girls on Saturdays at the Friendly House. This activity is slated to begin on Dec. 5 and will continue through March. Girls in grades 1-6 will participate from 9:30 a.m. to 11:30 a.m. at the Friendly House on Frederick Street. There is no fee required but girls must be Belleville residents. Interested participants should wear sneakers and sign up for the program with the instructors when they arrive. College and high school gymnasts will provide the supervision and will teach the basic fundamentals and routines.

Bellefonte boys and girls are encouraged to get out their pens, pencils, crayons and start writing

Two band members play their instruments during halftime ceremonies. Under the direction of Joe Kraemer, the band has done a fine job all season long.


Men's open basketball

The Men's Open Basketball program will begin on Dec. 5, 1 to 4 p.m. at the Middle School - Girls' Gym. Belleville resident men, over 18, can participate by showing the gym supervisor proof of residency. Non-residents will not be allowed in the gym.

John Alvarado, the MVP of the game for Belleville, goes in motion during second quarter of last Saturday's game.


The Belleville band was once again outstanding during halftime festivities.

EST. 1967
"OUR BEST VALUE SERVICE"
COMPLETE LINE OF
PETS & PET SUPPLIES
Birds • Fish • Reptiles • Small Animals
"TOTAL PET CARE"
★ DOG GROOMING ★
406 Main Street, Belleville
751-1221
Open 7 Days

 **PETIQUE**
PET SHOP
*"All Your Pet's Needs
Under One Roof"*

**IF YOUR DOG IS NOT BECOMING TO YOU
IT SHOULD BE COMING TO US.®**

75 Washington St.
Bloomfield, N.J.
429-9259



A CUT ABOVE FOR PETS ONLY
85 Franklin Avenue, Nutley
"Where Your Pet Is Treated As My Own"
PROFESSIONAL DOG GROOMING
OPEN 7 DAYS A WEEK
By Appointment Only
667-PET 1 (7381)
All Other Groomer Coupons Honored -
One (1) Coupon Per Pet

**THIS SPACE
CAN BE YOURS**
For Only \$25.00 Per Month
CALL 667-3000

**COUPON
SPECIAL
CAR WASH**

\$5.50 + Tax
For Full Service

Exterior \$4.75 + Tax
(With This Coupon)
Expires 12/30/92

**FRANKIE'S
FUTURMATIC
BRUSHLESS
CAR WASH**

305 Broad St. • Bloomfield
748-9459

Open Mon. - Sat. 8-6
• Sun. 8-3

AUTO LOANS!
No Credit?
Bad Credit?
WE FINANCE EVERYONE
New & Used Cars & Trucks
260 Available Now!
**CALL 1-800
CAR LOAN**

**CUSTOM PRINTING
AND EMBROIDERY**

SWEATS • JACKETS • TEES

TEAM UNIFORMS

FROM FACTORY
TO YOU!

NATIONAL SPORTSWEAR

368 CORTLAND ST. BELLEVILLE, NJ 07108

(201) 759-2005

DeMassi
PONTIAC
IN LYNDHURST

LOU DeMASSI'S DISCOUNT CORNER SINCE 1937

939-6100

EVERY DAY LOW LEASE PRICES ALL MAKES & MODELS
★★★★★ FIVE STAR SERVICE EXCELLENCE AWARD WINNER

DRIVE A
NEW
PONTIAC
FOR LESS

AS LOW AS

AS LOW AS 5.99% APR FINANCING
For qualified buyers

**NEW 1993
SUNBIRD LE
COUPE**

PONTIAC—4 cyl eng, 3 spd auto trans, split
pwr/steer/anti-lk brks/lks, am/fm cass, inter-
ior def, tilt, alum whls, tint gls, air cond, sp
Stk#J5612 VIN#P7501117. MSRP \$12,480.
FIRST TIME BUYERS REBATE, if qualified, 4.
Smartbuy, \$2,500 down payment, Net ar
finance = \$9125. Each payment = \$162.
APR, 1 payment of \$3994 or a \$250 dispos
conclusion of Smartbuy.

\$162

OR UP TO **\$1900** IN
FACTORY REBATE
SPECIALLY FOR THE THREE DAY LOW INVENTORY

**NEW 1993
GRAND AM
SE COUPE**

PONTIAC—4 cyl eng, 3 spd auto trans, pwr steel anti-lk brk/sk/s, bid seats, rr def, am/fm cass, air cond, tilt, 15" crosspale whls, Stk#9243, V818 PCT07183. MSRP: \$15,327. 47 month Smartbuy. \$2,500 down payment. Net amount to finance = \$11,863. Each payment = \$189. 6.9% APR. 1st payment of \$5,364 or a \$250 disposal fee at conclusion of Smartbuy.

\$189

HUGE DISCOUNTS!

**NEW 1993
GRAND PRIX
LE SEDAN**

PONTIAC—6 cyl eng, 4 speed auto trans, pwr/sts brks/sk/winds, cont cycle wipers, cruise, tilt, am/fm cass, air cond, rr def, flr mats, 15" alum whls. Stock #48. VIN#P210894. MSRP \$17,767. 47 month Smartbuy \$2,500 down payment. Net amount financed = \$13,307. Each payment = \$206. 6.99% APR. 1 payment of \$8,396 or a \$250 disposal fee at conclusion of Smartbuy.

\$206

**1993's
ARE HERE!**

**NEW 1993
BONNEVILLE SE**

PONTIAC—6 cyl eng, 4 spd auto trans, air c
pwr/steer/anti-lk brks/windsh/ks/ant/sest/mirr,
bag, remote deck rel, cruise, lamp group, gaug
am/fm cass, alum visor mirrs, custom trim. S
746. VIN#P120022 MSRP \$22,250. 47 mo
Smartbuy \$2,500 down payment. Not amount
finance = \$17,675. Each payment = \$299.5
APR. 1 payment of \$7,342.50 or \$250.50

\$299

YOUR LOCAL PONTIAC DEALER FOR BIGGER SAVINGS! • HOURS: MON-FRI 9-9 SAT-TU 5-5

Price(s) include(s) all costs to be paid by a consumer, except for licensing, registration and taxes.

PARK AND RIVERSIDE AVENUE, LYNDBURST

<h1 style="text-align: center;">BUY-RITE</h1> <p style="text-align: center;">LIQUOR</p> <p style="text-align: center;">NEW JERSEY PRICES EFFECTIVE: WED., DEC. 2, 1992 TUE., DEC. 8, 1992</p> <h2 style="text-align: center;">CATCH THE HOLIDAY SPIRIT</h2>					
J & B SCOTCH WHISKY \$13⁹⁹ <small>750 ML.</small>	CANADIAN MIST CANADIAN WHISKY \$11⁹⁹ <small>1.75 LITER</small>		AMERICAN VINTAGE 12⁰⁰ \$12⁰⁰ <small>750 ML.</small>	DECATO WHITE LABEL SCOTCH WHISKY \$24⁹⁹ <small>750 ML.</small>	SOUTHERN COMFORT \$6⁹⁹ <small>750 ML.</small>
JACK DANIEL'S COUNTRY COCKTAILS \$5⁹⁵ <small>PER FLASK</small>	ANTHONI'S ITALY'S FINEST \$5⁹⁹ <small>750 ML.</small>	KORBEL BRANDY \$14⁹⁹ <small>750 ML.</small>	FLEISCHMANN'S \$10⁹⁹ <small>750 ML.</small>	B.A.G. BLENDED AMERICAN GIN \$4⁹⁹ <small>750 ML.</small>	IMPORTED KAMUHA COGNAC \$23⁹⁹ <small>1.75 LITER</small>
MARGUERITE DE RISCAL BOTTLE \$6⁹⁹ <small>750 ML.</small>	DELICATO CHAMPAGNE \$3⁹⁹ <small>750 ML.</small>	PHILADELPHIA BLENDERS ONLY \$10⁹⁹ <small>1.75 LITER</small>	GLEN ELLER WHITE PORTWINE \$3⁹⁹ <small>750 ML.</small>	ALMADEIRA \$7⁹⁹ <small>1 LITER</small>	IMPORTED MARIE BEIZARD ANNETTE \$12⁹⁹ <small>750 ML.</small>
JOHNNIE WALKER LOCKER \$21⁹⁹ <small>750 ML.</small>	PORPOV 18 PROOF VODKA 20 YEAR OLD IN PLASTIC \$9⁹⁹ <small>1.75 LITER</small>	ET VOLET \$10⁹⁹ <small>750 ML.</small>	EARLY TIMES BLACKBERRY \$13⁹⁹ <small>1.75 LITER</small>	ITALIAN LA VILLA PHOTOGRAFICO \$6⁹⁹ <small>1 LITER</small>	FRENCH MARIE BEIZARD ANNETTE \$12⁹⁹ <small>750 ML.</small>
IMPORTED O'DAKLEY NEW ORLEANS \$8⁹⁵ <small>750 ML.</small>	GALLO WINERY \$6⁹⁹ <small>1 LITER</small>	INGLEMOOR MAYALE \$7⁹⁹ <small>1 LITER</small>	CARLO ROSSI PANLINO \$6⁹⁹ <small>BLACK BUSH</small>	MYRRIS \$10⁹⁹ <small>750 ML.</small>	FINLANDIA \$18⁹⁹ <small>1 LITER</small>
TANQUERAY \$11⁹⁹ <small>750 ML.</small>	OFF THE FLOOR BEER GUYS				RUSCH or RUSCH LIGHT \$3⁹⁹ <small>12 oz. Can, 13 Pack, CASE OF 24</small>
<p>REHEISEN (OUTSIDE) 12 oz. NW BEER, 13 PACK, CASE OF 24: \$16⁹⁹</p> <p>WINTERFEST COORS 12 oz. NW BEER, 13 PACK, PER 6 PACK: \$4⁹⁸</p> <p>MILLER HIGH LIFE, LITE, CELEBRATE DRAFT or GENUINE DRAFT LIGHT 12 oz. Can, 13 Pack, CASE OF 24: \$10⁹⁹</p> <p>SHARP'S NON ALCOHOLIC 12 oz. Can, 13 Pack, PER 6 PACK: \$2⁹⁹</p> <p>POSTICE'S VANITY 30 ml. Can, PER CASE: \$2⁹⁹</p>					
Fleischmans Preferred \$11⁹⁹ <small>1.75 LT.</small> MUST PRESENT COUPON <small>Cash and Carry Coupon Expires 12/8/92</small>	Canadian Club \$7⁹⁹ <small>750 ML</small> MUST PRESENT COUPON <small>Cash and Carry Coupon Expires 12/8/92</small>	Dewars \$13⁹⁹ <small>750 ML</small> MUST PRESENT COUPON <small>Cash and Carry Coupon Expires 12/8/92</small>			
Johnnie Walker Black \$16⁹⁹ <small>750 ML</small> MUST PRESENT COUPON <small>Cash and Carry Coupon Expires 12/8/92</small>	Gordon's Gin \$12⁵⁹ <small>1.75</small> MUST PRESENT COUPON <small>Cash and Carry Coupon Expires 12/8/92</small>	Beefeater Gin \$22⁹⁹ <small>1.75</small> MUST PRESENT COUPON <small>Cash and Carry Coupon Expires 12/8/92</small>			
E&J Brandy \$6⁹⁹ <small>750 ML</small> MUST PRESENT COUPON <small>Cash and Carry Coupon Expires 12/8/92</small>	Bolla-4-Bottle Gift Set \$21⁹⁹ <small>750 ML</small> MUST PRESENT COUPON <small>Cash and Carry Coupon Expires 12/8/92</small>	Courvoisier V.S. Cognac \$16⁸⁸ <small>750 ML</small> MUST PRESENT COUPON <small>Cash and Carry Coupon Expires 12/8/92</small>			
Santa Margherita Pinot Grigio \$12⁹⁹ <small>750 ML</small> MUST PRESENT COUPON <small>Cash and Carry Coupon Expires 12/8/92</small>	Rufino Riserva Ducale \$9⁹⁹ <small>750 ML</small> MUST PRESENT COUPON <small>Cash and Carry Coupon Expires 12/8/92</small>	Budweiser 24-12oz. Cans \$10⁷⁹ MUST PRESENT COUPON <small>Cash and Carry Coupon Expires 12/8/92</small>			
Coors-Light Reg.-Extra Gold \$10⁹⁹ <small>24-12oz Cans</small> MUST PRESENT COUPON <small>Cash and Carry Coupon Expires 12/8/92</small>	Bud-Light or Dry \$9⁹⁹ <small>24-12oz Cans</small> MUST PRESENT COUPON <small>Cash and Carry Coupon Expires 12/8/92</small>	Amstel Light \$16⁹⁵ <small>24-12oz Bottles</small> MUST PRESENT COUPON <small>Cash and Carry Coupon Expires 12/8/92</small>			

NUTLEY

BUY-RITE LIQUORS

558 Franklin Ave. • Nutley 667-1315

Open Mon.-Sat. 9am-10pm

Open Sundays 12pm-6pm

THIS STORE IS INDEPENDENTLY OWNED & OPERATED

Prices Effective Wed. Dec. 2-Tues. Dec. 8

* Cash & carry on all items - All prices subject to sales tax - We reserve the right to limit quantities - Manufacturer's notices are limited to one notice per household



A LEAVE TAKING - Fire Captain Kenneth Taras receives a plaque and a handshake from Deputy Fire Chief Robert Caruso on the occasion of Taras' retirement, after 25 years of service. Presentation was made at Annual Dinner of Belleville Firemen's Benevolent Association and Fire Officers Association at Branch Brook Manor.

Great American Smoke-Out at Middle School

Great things are happening at the Middle School! One of them occurred on Nov. 19 in the form of the Great American Smoke-Out. Under the direction of school nurse, Mrs. Noreen Curcio, the students participated in a variety of activities designed to point out the negative health aspects of smoking and to reinforce the fact that it is possible to quit.

A scavenger hunt generated a great deal of activity such as obtain-

High school promotes steroid awareness program

Belleville High School principal Dr. Joseph Ciccone, substance awareness coordinator Deborah Meola, John Senesky, Michael Pollard and athletic supervisor Karen Pucello developed a Belleville High School Weight Room Drug and Steroid Awareness Program.

The development of this program is twofold; to create an awareness of the inherent dangers of drug and steroid use for athletic training and to enable responsible student athletes entrance to weight room participation.

Participant requirements will consist of a three hour mandated drug and steroid education workshop. The workshop will be held three times during the school year prior to each athletic sports season, after school hours.

The workshop and weight room supervision will be conducted by hired school personnel and guest speakers with the substance awareness coordinator as a resource person.

Instructors will also address proper nutrition and rules and regulations governing weight room participation. Weight room activities are under the direction of Karen Pucello, supervisor of health, physical education and athletics.

NOTICE OF DECISION
BELLEVILLE
ZONING BOARD OF ADJUSTMENT
Please be advised that on October 1, 1991, the Belleville Zoning Board of Adjustment approved the application for a bulk variance at 57 Union Avenue, submitted by Armando and Miriam DaSilva, in order to permit a two-story addition to the rear of the existing 2 family home. A copy of the decision is available for public inspection at the Department of Planning and Development, 383 Washington Avenue, Belleville, during normal business hours.

By Robert Ringelstein
Director of Planning
Belleville, N.J. 07099

Belleville Times
Dec. 3, 1992
Fee: \$17.99

No. B92-539

SHERIFF'S SALE
SUPERIOR COURT OF NEW JERSEY, CHANCERY DIVISION, ESSEX COUNTY, DOCKET NO. F-4467-91 TRANSOHIO SAVINGS BANK, PLAINTIFF vs. ALFONSO SANTOS & GLORIA SANTOS, h/w, et al, DEFENDANTS. Execution For Sale of Mortgaged Premises

By virtue of the above stated writ of Execution, to me directed, I shall expose for sale by Public Auction, in SHERIFF'S OFFICE, Essex County Courts Building in Newark, on Tuesday, the 15th day of December 1992, at one-thirty P.M., (Prevailing Time)

The property to be sold is located in the City of NEWARK in the County of ESSEX, and the State of New Jersey. Commonly known as: 17 HELLER PARKWAY, NEWARK, NEW JERSEY 07104. Tax Lot No. 37 in Block No. 763. Dimensions of Lot (Approximately) 37.50 feet wide by 50 feet long. Nearest Cross Street: Situate on the southeasterly side of Woodside Avenue intersecting with the northeasterly side of Heller Parkway.

A full legal description can be found in the Office of the Register of Essex County. A DEPOSIT OF 10% OF THE BID PRICE IN CASH OR CERTIFIED FUNDS IS REQUIRED AT THE TIME OF SALE. The approximate amount of the Judgment to be satisfied by said sale is the sum of ONE HUNDRED FORTY-ONE THOUSAND THREE HUNDRED FIFTY-EIGHT DOLLARS AND EIGHTY CENTS (\$141,358.80) together with the costs of this sale.

The Sheriff reserves the right to adjourn the sale from time to time as provided by Law.

Newark, N.J. November 9, 1992
ARMANDO B. FONTOURA, Sheriff
Carkhuff & Radmin, Attorneys
Belleville Times
Nov. 19, 1992
Dec. 3, 1992
Fee: \$84.60

No. B92-494

SHERIFF'S SALE
SUPERIOR COURT OF NEW JERSEY, CHANCERY DIVISION, ESSEX COUNTY, DOCKET NO. F-23494-91 CITICORP MORTGAGE INC., PLAINTIFF vs. ELIAS I. MEDINA & FELICITA MEDINA, his wife, DEFENDANTS. Execution For Sale of Mortgaged Premises

By virtue of the above stated writ of Execution, to me directed, I shall expose for sale by Public Auction, in SHERIFF'S OFFICE, Essex County Courts Building in Newark, on Tuesday, the 15th day of December 1992, at one-thirty P.M., (Prevailing Time)

The property to be sold is located in the City of NEWARK in the County of ESSEX and the State of New Jersey. Commonly known as: 361-363 PARKER STREET, NEWARK, NEW JERSEY 07102. Tax Lot No. 37 in Block No. 607. Dimensions of Lot (Approximately) 100.00 feet wide by 50.00 feet long.

Nearest Cross Street: Situate on the SOUTHEASTERLY side of PARKER STREET, 80.00 feet from the NORTHEASTERLY side of SECOND AVENUE EAST.

A full legal description can be found in the Office of the Register of Essex County. A DEPOSIT OF 10% OF THE BID PRICE IN CASH OR CERTIFIED FUNDS IS REQUIRED AT THE TIME OF SALE. The approximate amount of the Judgment to be satisfied by said sale is the sum of ONE HUNDRED SIXTY-NINE THOUSAND FIVE HUNDRED TWENTY-NINE DOLLARS AND NINETY-THREE CENTS (\$169,529.93) together with the costs of this sale.

The Sheriff reserves the right to adjourn the sale from time to time as provided by Law.

Newark, N.J. November 9, 1992
ARMANDO B. FONTOURA, Sheriff
Shapiro & Kreisman, Attorneys
Belleville Times
Nov. 19, 1992
Dec. 3, 1992
Fee: \$82.72

No. B92-493



The right people TO DO BUSINESS WITH! BUSINESS CARD DIRECTORY

KINDLY CLIP AND SAVE THESE CARDS FOR FUTURE REFERENCE

G & S PAINTING
Interior • Exterior
Painting, Staining, Spackle, Stucco, Wallpaper, Pressure Wash
QUALITY WORK
FREE ESTIMATE Call Mark FULLY INSURED
201-808-5905

J. Coppola & Sons, Inc.
EST. 1942 48 Yrs. Exp.
Aluminum and Vinyl Siding
Roofs / Doors / Additions
Repairs / Windows / Gutters
429-9266
FULLY INSURED

CARL A. ORECHIO AGENCY
P.O. BOX 615
518 STUYVESANT AVENUE
LYNDHURST, N.J. 07071
(201) 460-8400
FAX: (201) 460-9258
BRUCE D. CICCONE

Armando Auto Body
Body and Fender Repair • Collision Work
INSURANCE ESTIMATES
TOWING SERVICE
201-773-0078
801-803 Main Avenue Passaic, NJ 07055

BILL'S GUTTER SERVICE
• Gutters & Leaders Cleaned and Flushed
• Repairs and Installation
• Quality Screening • Tree Trimming
CALL
338-0448
ALL WORK GUARANTEED

ONE STEP BETTER
PROFESSIONAL D.J. SERVICES
ANTHONY & LINDA LUONGO
North Jersey CALL:
• (201) 228-0359 •
South Jersey CALL:
• (908) 269-9247 •

J.P. Clarke
Heating | Air Conditioning
Sales • Service • Installation
Nutley, NJ (201) 284-1343

CHARMING LADY BEAUTY SALON
144 Chestnut Street Nutley
Complete Care and Coloring
Specializing in Perms and Cuts
to suit your special look
667-2133 appt. only Laura Laino

DANISH PAINTING CO.
European Quality Craftsmanship
667-7614 Kenneth G. Hansen

SHOCKED BY HIGH WINDOW PRICES?
Don't buy ANY replacement windows until you get my price!
Deal direct with owner. No salesman's commission. NO pressure. NO gimmicks.
\$100 OFF on Every Window and Door.
TOP QUALITY hermetically sealed vinyl windows in over 100,000 N.J. installations. Free estimates. Life time guarantee. Low prices. EXPERT one-day No mess installations. Custom built to size.
TRUE THERMAL WINDOW Co., Inc.
BILL KEARNEY
201-763-7672 or 1-800-696-2061
Fully Insured Licensed

Sincerely Yours
FRUIT BASKETS & GIFT CENTER
397 Centre St., Nutley, • 235-0345
WIDE VARIETY GIFT BASKETS FOR ALL OCCASIONS
Fantastic gift items such as
• Vases • Balloons • Collectibles • Silk Flowers
• Plush Animals
WE DELIVER LOCALLY & SHIP NATIONWIDE

National Basketball Association
Full & Partial Season Ticket Plans
Discounted Group Plans
RICHARD LARCARA
Corporate Sales Manager
NEW JERSEY NETS
Meadowlands Arena
East Rutherford, NJ 07073
201-939-4900 Ext. 223

Systematic Carpet Cleaning
\$13.50 per room
Steamed Cleaned
Shampoo & Steam Deep Cleaning
284-0845

TANO PAVING & CONCRETE
• Driveways • Steps • Walks
• Parking Lots • Sidewalks
(Fully Insured)
FREE ESTIMATES REAS. PRICED
DAN 661-0148

BRUSH WORKS
Painting Contractors
Fully Insured
8 Years Experience
Reasonable Prices
Quality & Neatness Still Count
743-5768
Mark Di Geronimo

DENTAL PLAN
1. INDIVIDUAL PLANS
2. FAMILY PLANS
3. GROUP PLANS
No Waiting Period
No Pre-Existing Conditions
CALL FOR INFORMATION
667-8534
Part Time Sales Available

A&J HOME IMPROVEMENTS
ROOFING • SIDING • LEADERS
GUTTERS • REPLACEMENT WINDOWS
FREE ESTIMATES
429-4937 481-1303

THIS SPACE CAN BE YOURS
For Only **\$25.00** per month
CALL 667-3000

BON VOYAGE

Savings up to 50% OFF
on 1993 Cruises
(subject to availability - certain restrictions apply)

CALL:
Jays Tarantino
for details
201-736-5550

traveltime
Essex Green Plaza
West Orange, NJ
"A full service travel agency"

CALL 667-3000 TO HAVE YOUR BUSINESS CARD INCLUDED EACH MONTH

Obituaries

Jacob J. Schwartz

Jacob J. Schwartz, 80, of Kingston, New York, died at his home on November 15.

Born in Brooklyn, New York, Mr. Schwartz came to Belleville some 70 years ago, moving to Kingston more than 20 years ago.

He was with the United States Post Office in Newark and then in Kingston, retiring as Mail Clerk some 15 years ago.

Mr. Schwartz enlisted in the United States Army in 1937 and was honorably discharged in 1945 as

Staff Sergeant in Company A, 770th Military Police Battalion.

His wife, the former Beatrice McCoy, predeceased him eight years ago.

Surviving are his sister, Ann Taylor of Belleville; three brothers, Louis of Orlando, Florida, Alfred of Waretown and Edward of Newark, and several nieces and nephews.

Funeral arrangements were made in Kingston.

Edward Fitzgerald, 75

Edward J. Fitzgerald, 75, formerly of Bloomfield, died Nov. 30 at Clara Maass Medical Center, Belleville.

A Mass was held today at St. Peter's Church, Belleville, following services at the O'Boyle Funeral Home, Bloomfield.

Mr. Fitzgerald had worked 42 years for Mechanics Finance, now called Shopper Charge Accounts Co., before retiring in 1981.

He was a native of Jersey City, where he graduated from St. Aloysius High School and St. Peter's College.

Mr. Fitzgerald graduated with honors from John Marshall law school in Jersey City in 1940 and was admitted to the New Jersey bar in 1942.

He served with the U.S. Army in the Philippines during World War II and was discharged in 1946.

He was married to Rosalie Furey from 1942 until her death in 1979.

Mr. Fitzgerald was married in 1982 to Joyce Ellis McElfresh, who taught elementary school in Bloomfield for 26 years until her retirement in 1983.

For the past eight years he had

been the director of the Duplicate Bridge Club sponsored by the Bloomfield Recreation Commission, and was a member of the American Contract Bridge League.

He also worked for the past five years with the Senior Health Insurance Program (SHIP).

As a SHIP volunteer, Mr. Fitzgerald helped senior citizens fill out their health insurance forms and cope with paperwork problems arising from their medical insurance coverage.

For 25 years, Mr. Fitzgerald sang with the Bloomfield Chorus. He was also a member of the Belleville Council of the Knights of Columbus.

Mr. Fitzgerald had lived in Belleville for 20 years before moving to Bloomfield in 1982 and then to Glen Ridge three years ago.

He is survived by his wife Joyce and three daughters, Mrs. Susan Del Grosso, Mrs. Beth Dupin and Miss Kathy Fitzgerald; a stepdaughter, Mrs. Nancy Stroud; a sister, Mrs. Marie Ackerman; and four grandchildren, Stephanie, Emma, David and Diana.

12: Foot problems, Dr. Lo Biondo; Dec. 15: Knee screening, Dr. Calvin Matthews; Dec. 19: Gynecological, Dr. Paul Ehrlich.

The Outreach Program will also conduct on-site screenings at places of business for employees. To arrange an on-site screening, call Assistant Coordinator Marie Oropollo at (201) 744-4644.

NOTICE TO ABSENT DEFENDANTS (L.S.) STATE OF NEW JERSEY
JEFFERSON INSURANCE COMPANY
YOU ARE HEREBY SUMMONED
AND REQUIRED to serve upon FED-
ERMAN AND PHELAN, P.C., plaintiff's
attorney whose address is Suite 505, Sentry
Office Plaza, 216 Haddon Avenue, West-
mont, New Jersey 08080, an answer to the
Complaint and Amendment to Complaint,
filed in a civil action, in which State Street
Bank and Trust Company, is plaintiff and
Robert J. Reilly, Jr., et al., are defendants
pending in the Superior Court of New
Jersey, Chancery Division, Essex County
and bearing Docket No. F-295-92 within
thirty-five (35) days after December 3, 1992
exclusive of such date. If you fail to do so,
judgment by default may be rendered
against you for the relief demanded in the
Complaint and Amendment to Complaint.
You shall file your answer and proof of
service in duplicate with the Clerk of the
Superior Court of New Jersey, Hughes
Justice Complex, CN-971, 24 Market Street,
Trenton, New Jersey 08625, in accordance
with the rules of civil practice and procedure.
This action has been instituted for the purpose of (1) foreclosing a mortgage dated
February 12, 1987 made by Robert J. Reilly,
as mortgagor given to The Dime Real Estate
Services, New Jersey, Inc. and recorded on
March 19, 1987 in Book 5388 of
Mortgages of Essex County, at Page 460.
Said mortgage was assigned on February 12,
1987 to The Savings Bank of New York,
F.S.B., and recorded on March 18, 1987 in
Book 584 of Assignments, said county, at
Page 587. Said mortgage was assigned on
July 27, 1988 to Shearson Lehman Pess-
enburgh Securities, Inc. and recorded on
August 11, 1988 in Book 611 of Assignments,
said county, at Page 349. Said mortgage was
assigned on July 27, 1988 to State Street
Bank and Trust Company, the plaintiff here-
in, and recorded on August 11, 1988 in Book
611 of Assignments of said county, at page
353; and, (2) to recover possession of, and
concerns premises commonly known as
454-83 Prospect Avenue, Unit No. 228,
West Orange, NJ 07052.

If you are unable to obtain an attorney you
may communicate with the New Jersey State
Bar Association by calling 800-852-0127.
You may also contact the Lawyer Referral
Service of the County of venue by calling
(201) 533-1779. If you cannot afford an attorney,
you may communicate with the Legal Services
office of the county of venue by calling (201) 672-6050.
YOU, Jefferson Insurance Company, are
named as a party defendant herein for any
lien, claim or interest you may have in, to or
on the mortgaged premises by virtue of the
following judgment:
Jefferson Insurance Company vs. Robert J.
Reilly
Superior Court of New Jersey
Judgment Number: J-02637-79
Date Entered: 10-31-79
Type of Action: Contract
Venue: Gloucester
Case Number: L-19829-75
Debt: \$37,401.65

DONALD F. PHELAN,
Acting Clerk,
Superior Court of New Jersey
Belleville Times
Dec. 3, 1992
Fee: \$36.19

No. B92-536

SHERIFF'S SALE
SUPERIOR COURT OF NEW JERSEY,
CHANCERY DIVISION, ESSEX
COUNTY, DOCKET NO. F-905-89
RESOLUTION TRUST CORPORATION
AS RECEIVER FOR THE UNITED
SAVINGS BANK, F.S.B., PLAINTIFF
vs. BRIDGEBROOK DEVELOPMENT
GROUP, LTD., et al., DEFENDANTS.
Execution For Sale of Mortgaged Premises

By virtue of the above stated writ of
Execution, to me directed, I shall expose for
sale by Public Auction, in SHERIFF'S
OFFICE, Essex County Courts Building in
Newark, on Tuesday, the 8th day of Decem-
ber 1992, at one-thirty P.M., (Prevaling
Time) all those tracts or parcels of land,
situate, lying and being in the Township of

Belleville Times
Nov. 12, 19, 26,
Dec. 3, 1992
Fee: \$17.08

No. B92-536

NOTICE TO ABSENT DEFENDANTS (L.S.) STATE OF NEW JERSEY
TO ROWAN BULLENS AND GRACE BULLENS, HIS WIFE
YOU ARE HEREBY SUMMONED
AND REQUIRED to serve upon FED-
ERMAN AND PHELAN, P.C., plaintiff's
attorney whose address is Suite 505, Sentry
Office Plaza, 216 Haddon Avenue, West-
mont, New Jersey 08080, an answer to the
Complaint and Amendment to Complaint,
filed in a civil action, in which Home Loan
and Investment Corporation is plaintiff and
Rowan Bullens, et al., are defendants
pending in the Superior Court of New
Jersey, Chancery Division, Essex County
and bearing Docket No. F-295-92 within
thirty-five (35) days after December 3, 1992
exclusive of such date. If you fail to do so,
judgment by default may be rendered
against you for the relief demanded in the

Complaint and Amendment to Complaint.
You shall file your answer and proof of
service in duplicate with the Clerk of the
Superior Court of New Jersey, Hughes
Justice Complex, CN-971, 24 Market Street,
Trenton, New Jersey 08625, in accordance
with the rules of civil practice and procedure.
This action has been instituted for the purpose of (1) foreclosing a mortgage dated
April 15, 1989 made by Rowan Bullens and
Grace Bullens, his wife, as mortgagors given
to Gibraltar Savings and Loan Association
and recorded on April 24, 1989, in Book 570
of Mortgages of Essex County at Page 651.
Said Mortgage was assigned on April 30,
1989 to Home Loan and Investment Associa-
tion and recorded on September 20, 1989 in
Book 527 of Assignments, said County, at
Page 572. Said Mortgage was then assigned
on April 20, 1989 to Marine Midland Bank,
the plaintiff herein, and recorded on Septem-
ber 20, 1989 in Book 630 of Assignments,
said county, at Page 642. Said mortgage was
assigned on January 23, 1992 to Home Loan
and Investment Association and recorded on
June 15, 1992 in Book 680 of Assignments,
said county, at Page 731; and, (2) to recover
possession of, and concerns premises com-
monly known as 138 North Arlington
Avenue, East Orange, NJ 07081.

If you are unable to obtain an attorney you
may communicate with the New Jersey State
Bar Association by calling 800-852-0127.
You may also contact the Lawyer Referral
Service of the County of venue by calling
(201) 533-1779. If you cannot afford an attorney,
you may communicate with the Legal Services
office of the county of venue by calling (201) 672-6050.

DONALD F. PHELAN,
Acting Clerk,
Superior Court of New Jersey
Belleville Times
Dec. 3, 1992
Fee: \$38.07

No. B92-492

SHERIFF'S SALE
SUPERIOR COURT OF NEW JERSEY,
CHANCERY DIVISION, ESSEX
COUNTY, DOCKET NO. F-263-92
KEARNY FEDERAL SAVINGS AND
LOAN ASSOCIATION, An Association
organized and existing under the Laws of
the United States of America, vs. SUKHIR S. CHIRAI aka Sukhir Singh Chrai (Dr.) aka Sukhir Chrai, et al.,
DEFENDANTS, Execution For Sale of
Mortgaged Premises

By virtue of the above stated writ of
Execution, to me directed, I shall expose for
sale by Public Auction, in SHERIFF'S
OFFICE, Essex County Courts Building in
Newark, on Tuesday, the 15th day of Decem-
ber 1992, at one-thirty P.M., (Prevaling
Time).

Property to be sold is located in the TOWN
OF BELLEVILLE, in the COUNTY OF
ESSEX and the State of New Jersey.
The property is commonly known as 10
Honus Street, Belleville, Essex County,
New Jersey.

The property is also known as BLOCK 762,
LOT 51 on the Tax Maps of the Town of
Belleville, Essex County, New Jersey.
Dimensions of Lot: Approximately 33.00
feet wide by 100.00 feet long, this lot is an
irregular lot.

Nearest Cross (Intersection) street: Eugene
Place.

DONALD F. PHELAN,
Acting Clerk,
Superior Court of New Jersey
Belleville Times
Dec. 3, 1992
Fee: \$38.07

No. B92-537

SHERIFF'S SALE
SUPERIOR COURT OF NEW JERSEY,
CHANCERY DIVISION, ESSEX
COUNTY, DOCKET NO. F-263-92
KEARNY FEDERAL SAVINGS AND
LOAN ASSOCIATION, An Association
organized and existing under the Laws of
the United States of America, vs. SUKHIR S. CHIRAI aka Sukhir Singh Chrai (Dr.) aka Sukhir Chrai, et al.,
DEFENDANTS, Execution For Sale of
Mortgaged Premises

By virtue of the above stated writ of
Execution, to me directed, I shall expose for
sale by Public Auction, in SHERIFF'S
OFFICE, Essex County Courts Building in
Newark, on Tuesday, the 15th day of Decem-
ber 1992, at one-thirty P.M., (Prevaling
Time).

Property to be sold is located in the TOWN
OF BELLEVILLE, in the COUNTY OF
ESSEX and the State of New Jersey.
The property is commonly known as 10
Honus Street, Belleville, Essex County,
New Jersey.

The property is also known as BLOCK 762,
LOT 51 on the Tax Maps of the Town of
Belleville, Essex County, New Jersey.
Dimensions of Lot: Approximately 33.00
feet wide by 100.00 feet long, this lot is an
irregular lot.

Nearest Cross (Intersection) street: Eugene
Place.

DONALD F. PHELAN,
Acting Clerk,
Superior Court of New Jersey
Belleville Times
Dec. 3, 1992
Fee: \$38.07

No. B92-492

Belleville, County of Essex and State of New
Jersey.
The premises are commonly known as 725
Joramene Street, Belleville, N.J.
The premises consist of the following units
in BRIDGEBROOK GARDENS CON-
DOMINIUMS
Unit No. 19, percentage interest 41/40%, Tax
Lot 1-Unit 19, Tax Block 635
The approximate amount of the Judgment
to be satisfied by said sale is the sum of
ONE HUNDRED EIGHTEEN
THOUSAND FIVE HUNDRED SEVENTY-
EIGHT DOLLARS AND THIRTY-
THREE CENTS (\$18,578.83) together
with the costs of this sale.

AND
Unit No. 46, percentage interest 41/49%
Tax Lot 1-Unit 46, Tax Block 635
The approximate amount of the Judgment
to be satisfied by said sale is the sum of
ONE HUNDRED EIGHTEEN
THOUSAND SEVEN HUNDRED THIRTY-
NINE DOLLARS AND THIRTY-
NINE CENTS (\$18,373.39), together
with the costs of this sale.

AND
Unit No. 73, percentage interest 41/100%,
Tax Lot 1-Unit 73, Tax Block 635
The approximate amount of the Judgment
to be satisfied by said sale is the sum of
ONE HUNDRED EIGHTEEN
THOUSAND THREE HUNDRED SEVEN-
TY-ONE DOLLARS AND THIRTY-
THREE CENTS (\$18,371.33), together
with the costs of this sale.

AND
Unit No. 149, percentage interest 41/100%,
Tax Lot 1-Unit 149, Tax Block 635
The approximate amount of the Judgment
to be satisfied by said sale is the sum of
ONE HUNDRED EIGHTEEN
THOUSAND THREE HUNDRED SEVEN-
TY-ONE DOLLARS AND THIRTY-
THREE CENTS (\$18,371.33), together
with the costs of this sale.

AND
Unit No. 150, percentage interest 41/100%,
Tax Lot 1, Unit 150, Tax Block 635
The approximate amount of the Judgment
to be satisfied by said sale is the sum of
ONE HUNDRED EIGHTEEN
THOUSAND THREE HUNDRED SEVEN-
TY-ONE DOLLARS AND THIRTY-
THREE CENTS (\$18,371.33), together
with the costs of this sale.

AND
Unit No. 150, percentage interest 41/100%,
Tax Lot 1, Unit 150, Tax Block 635
The approximate amount of the Judgment
to be satisfied by said sale is the sum of
ONE HUNDRED EIGHTEEN
THOUSAND THREE HUNDRED SEVEN-
TY-ONE DOLLARS AND THIRTY-
THREE CENTS (\$18,371.33), together
with the costs of this sale.

AND
Unit No. 150, percentage interest 41/100%,
Tax Lot 1, Unit 150, Tax Block 635
The approximate amount of the Judgment
to be satisfied by said sale is the sum of
ONE HUNDRED EIGHTEEN
THOUSAND THREE HUNDRED SEVEN-
TY-ONE DOLLARS AND THIRTY-
THREE CENTS (\$18,371.33), together
with the costs of this sale.

AND
Unit No. 150, percentage interest 41/100%,
Tax Lot 1, Unit 150, Tax Block 635
The approximate amount of the Judgment
to be satisfied by said sale is the sum of
ONE HUNDRED EIGHTEEN
THOUSAND THREE HUNDRED SEVEN-
TY-ONE DOLLARS AND THIRTY-
THREE CENTS (\$18,371.33), together
with the costs of this sale.

AND
Unit No. 150, percentage interest 41/100%,
Tax Lot 1, Unit 150, Tax Block 635
The approximate amount of the Judgment
to be satisfied by said sale is the sum of
ONE HUNDRED EIGHTEEN
THOUSAND THREE HUNDRED SEVEN-
TY-ONE DOLLARS AND THIRTY-
THREE CENTS (\$18,371.33), together
with the costs of this sale.

AND
Unit No. 150, percentage interest 41/100%,
Tax Lot 1, Unit 150, Tax Block 635
The approximate amount of the Judgment
to be satisfied by said sale is the sum of
ONE HUNDRED EIGHTEEN
THOUSAND THREE HUNDRED SEVEN-
TY-ONE DOLLARS AND THIRTY-
THREE CENTS (\$18,371.33), together
with the costs of this sale.

AND
Unit No. 150, percentage interest 41/100%,
Tax Lot 1, Unit 150, Tax Block 635
The approximate amount of the Judgment
to be satisfied by said sale is the sum of
ONE HUNDRED EIGHTEEN
THOUSAND THREE HUNDRED SEVEN-
TY-ONE DOLLARS AND THIRTY-
THREE CENTS (\$18,371.33), together
with the costs of this sale.

AND
Unit No. 150, percentage interest 41/100%,
Tax Lot 1, Unit 150, Tax Block 635
The approximate amount of the Judgment
to be satisfied by said sale is the sum of
ONE HUNDRED EIGHTEEN
THOUSAND THREE HUNDRED SEVEN-
TY-ONE DOLLARS AND THIRTY-
THREE CENTS (\$18,371.33), together
with the costs of this sale.

AND
Unit No. 150, percentage interest 41/100%,
Tax Lot 1, Unit 150, Tax Block 635
The approximate amount of the Judgment
to be satisfied by said sale is the sum of
ONE HUNDRED EIGHTEEN
THOUSAND THREE HUNDRED SEVEN-
TY-ONE DOLLARS AND THIRTY-
THREE CENTS (\$18,371.33), together
with the costs of this sale.

AND
Unit No. 150, percentage interest 41/100%,
Tax Lot 1, Unit 150, Tax Block 635
The approximate amount of the Judgment
to be satisfied by said sale is the sum of
ONE HUNDRED EIGHTEEN
THOUSAND THREE HUNDRED SEVEN-
TY-ONE DOLLARS AND THIRTY-
THREE CENTS (\$18,371.33), together
with the costs of this sale.

AND
Unit No. 150, percentage interest 41/100%,
Tax Lot 1, Unit 150, Tax Block 635
The approximate amount of the Judgment
to be satisfied by said sale is the sum of
ONE HUNDRED EIGHTEEN
THOUSAND THREE HUNDRED SEVEN-
TY-ONE DOLLARS AND THIRTY-
THREE CENTS (\$18,371.33), together
with the costs of this sale.

AND
Unit No. 150, percentage interest 41/100%,
Tax Lot 1, Unit 150, Tax Block 635
The approximate amount of the Judgment
to be satisfied by said sale is the sum of
ONE HUNDRED EIGHTEEN
THOUSAND THREE HUNDRED SEVEN-
TY-ONE DOLLARS AND THIRTY-
THREE CENTS (\$18,371.33), together
with the costs of this sale.

AND
Unit No. 150, percentage interest 41/100%,
Tax Lot 1, Unit 150, Tax Block 635
The approximate amount of the Judgment
to be satisfied by said sale is the sum of
ONE HUNDRED EIGHTEEN
THOUSAND THREE HUNDRED SEVEN-
TY-ONE DOLLARS AND THIRTY-
THREE CENTS (\$18,371.33), together
with the costs of this sale.

AND
Unit No. 150, percentage interest 41/100%,
Tax Lot 1, Unit 150, Tax Block 635
The approximate amount of the Judgment
to be satisfied by said sale is the sum of
ONE HUNDRED EIGHTEEN
THOUSAND THREE HUNDRED SEVEN-
TY-ONE DOLLARS AND THIRTY-
THREE CENTS (\$18,371.33), together
with the costs of this sale.

AND
Unit No. 150, percentage interest 41/100%,
Tax Lot 1, Unit 150, Tax Block 635
The approximate amount of the Judgment
to be satisfied by said sale is the sum of
ONE HUNDRED EIGHTEEN
THOUSAND THREE HUNDRED SEVEN-
TY-ONE DOLLARS AND THIRTY-
THREE CENTS (\$18,371.33), together
with the costs of this sale.

AND
Unit No. 150, percentage interest 41/100%,
Tax Lot 1, Unit 150, Tax Block 635
The approximate amount of the Judgment
to be satisfied by said sale is the sum of
ONE HUNDRED EIGHTEEN
THOUSAND THREE HUNDRED SEVEN-
TY-ONE DOLLARS AND THIRTY-
THREE CENTS (\$18,371.33), together
with the costs of this sale.

AND
Unit No. 150, percentage interest 41/100%,
Tax Lot 1, Unit 150, Tax Block 635
The approximate amount of the Judgment
to be satisfied by said sale is the sum of
ONE HUNDRED EIGHTEEN
THOUSAND THREE HUNDRED SEVEN-
TY-ONE DOLLARS AND THIRTY-
THREE CENTS (\$18,371.33), together
with the costs of this sale.

AND
Unit No. 150, percentage interest 41/100%,
Tax Lot 1, Unit 150, Tax Block 635
The approximate amount of the Judgment
to be satisfied by said sale is the sum of
ONE HUNDRED EIGHTEEN
THOUSAND THREE HUNDRED SEVEN-
TY-ONE DOLLARS AND THIRTY-
THREE CENTS (\$18,371.33), together
with the costs of this sale.

AND
Unit No. 150, percentage interest 41/100%,
Tax Lot 1, Unit 150, Tax Block 635
The approximate amount of the Judgment
to be satisfied by said sale is the sum of
ONE HUNDRED EIGHTEEN
THOUSAND THREE HUNDRED SEVEN-
TY-ONE DOLLARS AND THIRTY-
THREE CENTS (\$18,371.33), together
with the costs of this sale.

AND
Unit No. 150, percentage interest 41/100%,
Tax Lot 1, Unit 150, Tax Block 635
The approximate amount of the Judgment
to be satisfied by said sale is the sum of
ONE HUNDRED EIGHTEEN
THOUSAND THREE HUNDRED SEVEN-
TY-ONE DOLLARS AND THIRTY-
THREE CENTS (\$18,371.33), together
with the costs of this sale.

AND
Unit No. 150, percentage interest 41/100%,
Tax Lot 1, Unit 150, Tax Block 635
The approximate amount of the Judgment
to be satisfied by said sale is the sum of
ONE HUNDRED EIGHTEEN
THOUSAND THREE HUNDRED SEVEN-
TY-ONE DOLLARS AND THIRTY-
THREE CENTS (\$18,371.33), together
with the costs of this sale.

AND
Unit No. 150, percentage interest 41/100%,
Tax Lot 1, Unit 150, Tax Block 635
The approximate amount of the Judgment
to be satisfied by said sale is the sum of
ONE HUNDRED EIGHTEEN
THOUSAND THREE HUNDRED SEVEN-
TY-ONE DOLLARS AND THIRTY-
THREE CENTS (\$18,371.33), together
with the costs of this sale.

AND
Unit No. 150, percentage interest 41/100%,
Tax Lot 1, Unit 150, Tax Block 635
The approximate amount of the Judgment
to be satisfied by said sale is the sum of
ONE HUNDRED EIGHTEEN
THOUSAND THREE HUNDRED SEVEN-
TY-ONE DOLLARS AND THIRTY-
THREE CENTS (\$18,371.33), together
with the costs of this sale.

AND
Unit No. 150, percentage interest 41/100%,
Tax Lot 1, Unit 150, Tax Block 635
The approximate amount of the Judgment
to be satisfied by said sale is the sum of
ONE HUNDRED EIGHTEEN
THOUSAND THREE HUNDRED SEVEN-
TY-ONE DOLLARS AND THIRTY-
THREE CENTS (\$18,371.33), together
with the costs of this sale.

AND
Unit No. 150, percentage interest 41/100%,
Tax Lot 1, Unit 150, Tax Block 635
The approximate amount of the Judgment
to be satisfied by said sale is the sum of
ONE HUNDRED EIGHTEEN
THOUSAND THREE HUNDRED SEVEN-
TY-ONE DOLLARS AND THIRTY-
THREE CENTS (\$18,371.33), together
with the costs of this sale.

AND
Unit No. 150, percentage interest 41/100%,
Tax Lot 1, Unit 150, Tax Block 635
The approximate amount of the Judgment
to be satisfied by said sale is the sum of
ONE HUNDRED EIGHTEEN
THOUSAND THREE HUNDRED SEVEN-
TY-ONE DOLLARS AND THIRTY-
THREE CENTS (\$18,371.33), together
with the costs of this sale.

AND
Unit No. 150, percentage interest 41/100%,
Tax Lot 1, Unit 150, Tax Block 635
The approximate amount of the Judgment
to be satisfied by said sale is the sum of
ONE HUNDRED EIGHTEEN
THOUSAND THREE HUNDRED SEVEN-
TY-ONE DOLLARS AND THIRTY-
THREE CENTS (\$18,371.33), together
with the costs of this sale.

AND
Unit No. 150, percentage interest 41/100%,
Tax Lot 1, Unit 150, Tax Block 635
The approximate amount of the Judgment
to be satisfied by said sale is the sum of
ONE HUNDRED EIGHTEEN
THOUSAND THREE HUNDRED SEVEN-
TY-ONE DOLLARS AND THIRTY-
THREE CENTS (\$18,371.33), together
with the costs of this sale.

AND
Unit No. 150, percentage interest 41/100%,
Tax Lot 1, Unit 150, Tax Block 635
The approximate amount of the Judgment
to be satisfied by said sale is the sum of
ONE HUNDRED EIGHTEEN
THOUSAND THREE HUNDRED SEVEN-
TY-ONE DOLLARS AND THIRTY-
THREE CENTS (\$18,371.33), together
with the costs of this sale.

Complaint and Amendment to Complaint.
You shall file your answer and proof of
service in duplicate with the Clerk of the
Superior Court of New Jersey, Hughes
Justice Complex, CN-971, 24 Market Street,
Trenton, New Jersey 08625, in accordance
with the rules of civil practice and procedure.
This action has been instituted for the purpose of (1) foreclosing a mortgage dated
April 15, 1989 made by Rowan Bullens and
Grace Bullens, his wife, as mortgagors given
to Gibraltar Savings and Loan Association
and recorded on April 24, 1989, in Book 570
of Mortgages of Essex County at Page 651.
Said Mortgage was assigned on April 30,
1989 to Home Loan and Investment Associa-
tion and recorded on September 20, 1989 in
Book 527 of Assignments, said County, at
Page 572. Said Mortgage was then assigned
on April 20, 1989 to Marine Midland Bank,
the plaintiff herein, and recorded on Septem-
ber 20, 1989 in Book 630 of Assignments,
said county, at Page 642. Said mortgage was
assigned on January 23, 1992 to Home Loan
and Investment Association and recorded on
June 15, 1992 in Book 680 of Assignments,
said county, at Page 731; and, (2) to recover
possession of, and concerns premises com-
monly known as 138 North Arlington
Avenue, East Orange, NJ 07081.

If you are unable to obtain an attorney you
may communicate with the New Jersey State
Bar Association by calling 800-852-0127.
You may also contact the Lawyer Referral
Service of the County of venue by calling
(201) 533-1779. If you cannot afford an attorney,
you may communicate with the Legal Services
office of the county of venue by calling (201) 672-6050.

YOU, Rowan Bullens, are named as a party defendant to this foreclosure action because you are the record owner of the mortgaged premises, and because you executed the bond and mortgage being foreclosed herein and may be responsible for any deficiency therein and for any claim, lien or interest which you may have in, to or on the mortgaged premises.

YOU, Grace Bullens, are named as a party defendant to this foreclosure action because you are the record owner of the mortgaged premises, and because you executed the bond and mortgage being foreclosed herein and may be responsible for any deficiency therein and for any claim, lien or interest which you may have in, to or on the mortgaged premises.

DONALD F. PHELAN,
Acting Clerk,
Superior Court of New Jersey
Belleville Times
Dec. 3, 1992
Fee: \$38.07

No. B92-537

TAX SALE
NOTICE OF SALE OF PROPERTY FOR NON-PAYMENT OF TAXES, ASSESSMENTS AND OTHER MUNICIPAL LIENS.
PUBLIC NOTICE IS HEREBY GIVEN THAT the undersigned, Collector of Taxes of the Township of Belleville, in the County of Essex, will sell at Public Auction in the Council Chambers in the Town Hall of said Township of
MONDAY, DECEMBER 21, 1992

Said lands will be sold to make the amount of municipal liens chargeable against the same on the first day of July, 1992 as computed in the following list together with interest on said amount from the first day of July to the date of sale and costs of sale.
Said lands will be sold in fee to such persons as will purchase the same subject to redemption at the lowest rate of interest, but in no case in excess of eighteen per centum annum. The payment for the sale shall be made before the conclusion of the sale or the property shall be resold.

Any parcel of real property for which there shall be no other purchase will be struck off and sold to the Township of Belleville in fee for redemption at eighteen per centum, and the municipality shall have the same remedies and rights as other purchasers, including the right to buy or foreclose the right to redemption.

The sale is made under the provision of an act of the legislature entitled, "An act concerning unpaid taxes, assessments and other municipal charges on real property and providing for the collection thereof by the creation and enforcement of liens thereon," (R.S. 545:10 to 545:111.)

At any time before the sale the undersigned will receive payment of the amount due on any property, with interest and costs incurred up to the time of payment.
The said lands subject to sale are described in accordance with the tax duplicate, including the name of the owner as shown on the last tax duplicate and the aggregate of taxes and assessments which were in lien thereon the first day of July, 1992, exclusive, however, of the lien for taxes for the year 1991 are listed below.

Given under my hand this nineteenth day of November, 1992.

STEPHEN N. VOGEL, JR.
TAX COLLECTOR

Block	Lot	Qualif.	Name of Owner	Property Location	Total Amount
13	17		Roma Realty, Inc.	159 Main St.	\$ 738.45
13	19		Roma Realty, Inc.	155 Main St.	632.05
15	2		Anderson, Elizabeth, Estate of	114 Cortlandt St.	1,157.92
15	11		Wells, Norma	29 Belleville Ave.	298.32
15	30		Sweeney, Miah, J.	30 William St.	280.96
21	12		Ritter, Mary D. & Leyble, Agnes R.	26 Ralph St.	3,513.24
21	21		Salermitano, G. & D. & Lu Lin-Yun & C.	261-263 Main St.	5,837.90
22	21		Watt, James, Estate of	156 Stephens St.	2,209.77
38	3		Excotic Leather Trading Corp.	14 Raymond St.	546.93
38	4		Excotic Leather Trading Corp.	16 Raymond St.	557.57
38	5		Excotic Leather Trading Corp.	18 Raymond St.	557.57
38	6		Excotic Leather Trading Corp.	20 Raymond St.	568.21
38	7		Excotic Leather Trading Corp.	22 Raymond St.	568.21
38	8		Excotic Leather Trading Corp.	24 Raymond St.	568.21
38	9		Excotic Leather Trading Corp.	26 Raymond St.	578.86
38	21		Excotic Leather Trading Corp.	503-505 Main St.	9,536.54
38	23		Excotic Leather Trading Corp.	491-501 Main St.	10,959.08
39	1		S. Remodeling Corp. c/o V. Scirra	279 Ralph St.	1,445.50
47	12		Reverde Realty Inc.	32-34 Greylock Ave.	1,410.69
47	16		Reverde Realty Inc.	42 Greylock Ave.	1,399.85
47	18		Reverde Realty Inc.	44 Greylock Ave.	642.69
47	19		Reverde Realty Inc.	50 Greylock Ave.	2,061.22
47	23		Reverde Realty Inc.	54 Greylock Ave.	1,345.58
47	35		Reverde Realty Inc.	33-49 Roosevelt Ave.	34,012.40
47	37		Reverde Realty Inc.	27 Roosevelt Ave.	706.52
47	40		Reverde Realty Inc.	21-25 Roosevelt Ave.	1,798.17
48	11		Ampol Realty Corp.	24 Roosevelt Ave.	9,983.32
48	14		Ampol Realty Corp.	30 Roosevelt Ave.	1,247.93
48	16		Ampol Realty Corp.	34-36 Roosevelt Ave.	1,881.86
48	19		Ampol Realty Corp.	38-46 Roosevelt Ave.	13,859.36
65	3		De Marco, Richard	61-71 Mill St.	1,028.78
66	1		Pariso Bros., Inc.	16 Washington Ave.	7,532.22
67	45	A	De Marco, Mary Lou	60 Schuyler St.	1,037.25
70	1		Cayon, Mark & Deborah	10 Valley St.	2,033.57
73	5		Crichton, Joseph	118 Washington Ave.	3,191.10
73	12		Sani, Hatinder & Rumlinder	134 Washington Ave.	366.19
78	8		Anthony C. Corp.	191-213 Stephens St.	55,237.15
78	11		Salvatore, C. Corp.	300 Cortlandt St.	447.65
78	13		Jolly Roger Motor Co. c/o Ceram Cons.	302-312 Cortlandt St.	2,846.08
78	69		Salvatore, C. Corp.	312 Cortlandt St.	490.38
79	51		Rothstein, L. J. c/o Essex Fiber Mill	335-353 Cortlandt St.	34,079.54
80	7		Sunny Gate Trading Corp.	306-308 Washington Ave.	10,257.73
80	8		Sunny Gate Trading Corp.	310 Washington Ave.	907.61
86	13	CG08	Dey, C. William	6 Essex St.	1,358.84
88	3		Devita, Edward & Rose	386 Washington Ave.	205.52
89	26		DeBacco, Joseph & Evelyn	470 Washington Ave.	2,537.52
89	20		Panzitta, Nicola	478-482 Washington Ave.	3,379.55
92	28		Rowell, Loree V. Est. c/o F. Rowell	335 Ralph St.	2,991.33
104	34		Nota, Filippo & Zolla	106-108 Greylock Ave.	5,213.05
104	37		Nota, Filippo	112 Greylock Ave.	11,854.93
116	52		Cristelli, Patrick	132-134 Mill St.	13,823.13
118	6		Idrovo, Flavio & Italia	23-25 Howard Pl.	168.10
118	36		Fredericks, Bridget & Peter	34 Van Rensselaer St.	3,234.07
119	35		Rusignuolo, Anthony & Carmella	20 Howard Pl.	557.57
119	36		Rusignuolo, Anthony & Carmella	22 Howard Pl.	3,658.89
119	37		Rusignuolo, Anthony & Carmella	24 Howard Pl.	568.21
120	27		Nagelmann, Joseph	125 Washington Ave.	209.05
130	26		Ferry, Jr. Frank	43 Prospect St.	4,467.66
133	30		Washington Ave. Associates, L.P.	325-335 Washington Ave.	25,101.11
136	46		Batoff, Mitchell & Bertha E.	32-34 Cleman Pl.	1,584.33
137	48		Fallacara, Joseph M. & Janet T.	30 Rossmore Pl.	1,595.71
137	54		Capaldo, Kathleen A.	454-456 Pl.	4,541.19
151	4		Bui, Thui, Lan Huang, Van Quan & Thuma	544 Washington Ave.	2,842.83
151	11		Baker, Frederick H. Jr. & Diane	538 Washington Ave.	3,983.52
153	12		Gue, George & Norma Long	134 Floyd St.	7,652.84
168	10		Bridge, Peter J.	136 Beech St.	3,355.44
180	22		Borowick, Walter & Barbara	19 Church Terr.	3,570.54
185	24		Delestin, Miguel & Romona	101 William St.	3,322.11
186	3		Tuosto, Angela	68 Clinton St.	1,062.43

Block	Lot	Qualif.	Name of Owner	Property Location	Total Amount
186	19		Uins, Ronald	163-167 Belleville Ave.	8,642.99
191	35		Colombo, Nicholas A. & Nicholas J.	72 De Witt Ave.	1,277.61
191	105		Vaz, Maria M.	178 Belleville Ave.	1,469.27
194	10		Nisrovicia, Angelina Estate	124 Union Ave.	3,805.78
194	73		Kestano, Charles	103 De Witt Ave.	1,401.11
194	78		Shewcock, Carmela	91 De Witt Ave.	4,865.85
194	98		Spatoia, Pasquale & Filomena	55 De Witt Ave.	478.97
194	113		Munoz, Franklin, Betty & Monge. A.	27 De Witt Ave.	838.72
194	131		Lempert, Philip	208 Belleville Ave.	4,761.81
197	22		Montalbano, Joseph, Etal	2 Lloyd Place	4,270.39
198	8		Callahan, Francis & Mary	172 De Witt Ave.	945.50
214	14		Hineskin, Maria	198 Linden Ave.	3,793.54
216	42		Androska, Victor & Clarise & Goias, P.	169 Linden Ave.	67.11
217	26		Herrmann, John W.	27 Broadway St.	3,965.12
220	11		Hutchinson, Robert & Andrea	422 De Witt Ave.	4,197.99
220	32		Munoz, John A. & Tamara A.	93 Bell St.	3,437.12
225	2		Youssef, Mandouh	232 Linden Ave.	170.35
231	15		Shaffer, Richard	131 Broadway St.	1,954.34
248	20		Mac Donald, Paul & Janet	8 Smith St.	734.15
248	29		Hood, Sarah, Estate of	22 Smith St.	1,423.97
255	14	C00A1	Union Court Condos	61-67 Union Ave.	1,731.37
255	14	C00A3	Union Court Condos	61-67 Union Ave.	1,731.37
255	14	C00A5	Union Court Condos	61-67 Union Ave.	1,731.37
255	14	C00A6	Union Court Condos	61-67 Union Ave.	1,731.37
255	14	C00B3	Union Court Condos	61-67 Union Ave.	1,731.37
255	14	C00B4	Union Court Condos	61-67 Union Ave.	1,731.37
255	14	C00B5	Union Court Condos	61-67 Union Ave.	1,731.37
255	14	C00B6	Union Court Condos	61-67 Union Ave.	1,731.37
255	14	C00D5	Union Court Condos	61-67 Union Ave.	2,213.77
256	21		Cornish, John J.	89 Union Ave.	2,841.42
262	14		Cocco, Giorgio & Ida	34 Mt. Prospect Ave.	259.69
262	20		Giuliano, Marie	50 Mt. Prospect Ave.	4,237.46
262	41		Aurumina, Geraldine	90 Mt. Prospect Ave.	40.22
262	42		Aurumina, John Estate	92 Mt. Prospect Ave.	889.10
264	48		Nisrovicia, Angelina Estate	3 Cedar Hill Ave.	6,138.32
268	60		Aurumina, John & Geraldine	83 Mt. Prospect Ave.	2,281.58
275	1		Gencarelli, Anna	301 Joralemon St.	497.59
282	42		Cummings, Everett & Diane	23-25 Van Rensselaer Pl.	789.67
289	1		Piskura, Josephine	191 Malone Ave.	2,899.94
299	10		Corte, Philip D. & Frances D.	17 Campbell Ave.	1,921.89
339	44		Hildreth, Charles & Barbara	19 Parkside Ave.	3,650.52
341	19		Rinaldi, Florence (L.E.) & Rinaldi, Etal	48 Garden Ave.	3,952.87
345	25		Oliver, Wanda & Posada, Mariano & F.	44 Crescent Terr.	342.40
345	46		Nisrovicia, Angelina Estate	18 Perry St.	6,570.90
352	5		Giordano, John R. & Linda	178 Garden Ave.	1,308.45
353	22		Roselli, Robert & Elizabeth A.	115 Garden Ave.	2,085.47
355	9		Woytowich, William & Spoerry Carol	17 Minker Pl.	1,558.01
360	59		Fernandez, Oscar & Susana	336 Joralemon St.	2,960.87
361	4		Foss, Alfred & La Morle, Mary	18 Forest St.	69.57
369	6		Maiella, Richard Sr. & Lena	20 Belmont St.	1,812.67
377	1		Corbo, Lawrence & Jovina	182 Forest St.	2,568.51
377	19		Desai, Ashok & Rashmi	9-11 Mary St.	444.02
378	21		Barnett, Howard & E.M. & Prieto M.	132 Belmont St.	9,946.05
380	22		Grogan, Robert	425 Greylock Pkwy.	648.32
381	11		Bozza, Michael & Sharon	168 Noton St.	287.83
389	2		Faltraco, Joseph	6 Federal St.	4,183.99
389	46		Faltraco, Joseph	44 Emmett St.	115.65
426	52		Huang, Richard & Maureen	167 Noton St.	783.01
426	72		Bliss, Walter R. Sr.	22 Mitchell St.	2,716.55
466	64	C00C4	McCann, William, Mary & Sharon	482 Joralemon St. C4	688.18
470	1		Bannon, Virginia	660 Mill St.	3,457.19
503	26		McNally, Paul & Susan	22 Madison St.	1,049.97
510	93		Alessio, F.D. & Apollonia	311 Passaic Ave.	7,339.95
520	70	C00C3	Marotti, Jonathan	666 Mill St. C3	1,273.58
529	4		Unis, Diane C.	129 Stillwood Ave.	4,565.71
557	31		Siconolfi, Jerry & Louisa	366 Franklin Ave.	3,320.75
570	1		Rullo, Anthony & Grace	614 Joralemon St.	93.92
571	17		Rusomanno, Michele	96 Ligham St.	4,847.61
576	24		Corriveau, Joseph & Assunta	407-409 Franklin Ave.	6,510.82
585	14		Longobardi, Maria A.	79 Glass Ave.	5,657.46
590	60	CF015	Corriveau, Joseph & Kathleen	730 Mill St.	1,754.59
605	6		Keegan, Richard & Martha	13 Elms Pl.	1,090.23
607	14		Baglioni, Geraldine	32 Pleasant Ave.	6,561.40
615	48		Schick, Theresa & George	127-129 Carpenter St.	2,023.62
615	56		Schick, Theresa & George	127-129 Carpenter St.	118.27
635	1	C0019	Bridgebrook Dev. Group Ltd.	725 Joralemon St.	594.81
635	1	C0046	Bridgebrook Dev. Group Ltd.	725 Joralemon St.	594.81
635	1	C0073	Bridgebrook Dev. Group Ltd.	725 Joralemon St.	594.81
635	1	C0081	Main Development Group	725 Joralemon St.	1,119.35
635	1	C0087	Mionello, Anthony & Barbara	725 Joralemon St. U 87	2,809.27
635	1	C0133	Main Development Group	725 Joralemon St.	622.90
635	1	C0149	Bridgebrook Dev. Group Ltd.	725 Joralemon St.	761.28
635	1	C0150	Bridgebrook Dev. Group Ltd.	725 Joralemon St.	594.81
635	1	C0226	Main Development Group	725 Joralemon St.	761.28
657	10		Healy, William & Anne	9-11 Grove St.	1,132.15
665	52	C00B7	Kiesmer, Wayne & Adoracion R.	111 Franklin Ave.	493.82
676	36		Dann, Frank M.	13 Louise Ct.	806.96

The Belleville Times
December 10, 17 and 24
Fee: \$415.48

Teachers attend science workshop

Last June, approximately thirty five teachers attended one or more of the three science institute workshops proposed by Bess Efstathiou, Science Supervisor of the Belleville Public Schools. The focus of these workshops is to improve science instruction, especially at the elementary level. Efstathiou, in conjunction with Michael Lally, Assistant Superintendent of Schools, have sponsored these workshops to encourage teachers to handle more hands-on science activities in the classroom. Field trips and hands-on activities dominated the sessions.

The first of three programs included two field trips, one to the New Jersey Aquarium in Camden and the other to the Sterling Hill Mine in Ogdenburg. The aquarium, located just outside Philadelphia, opened in the spring of this year and focuses primarily on life in the Atlantic Ocean. Teachers spent the day viewing exhibits and displays of marine and freshwater life and attended lectures given by the aquarium staff who were both out of and in the water. Teachers were given a special tour of the Sterling Hill Mine, a unique zinc mine as it is the only mine which contains certain minerals in min-

able quantities. Although the mine was closed in 1987 as a working mine, it is open for tours. The adjacent museum, housed in what was the mine's change house (for miners changing into street clothes), depicts the history of the mine.

The final segment of this first workshop consisted of a presentation by Dr. Doris White, Professor of Curriculum and Instruction at William Paterson State College. Dr. White instructed teachers in how to assemble and regulate an incubator to hatch fertilized chicken and duck eggs. Four incubators will be available for elementary teachers to use in their classrooms.

Sarah Yauch, a science teacher at Belleville Middle School, conducted the second workshop, Life in a Drop of Water. Elementary teachers used microscopes to observe and study various live organisms which live in aquatic environments.

The final workshop was presented by Bruce Kenitz, a science teacher at Belleville High School. The program entitled World of Microbes concentrated on bacteria found in everyday life, such as those found in yogurt and sauerkraut.

ADVERTISEMENT FOR BIDS.
SEALED proposals will be received by the Board of Education of the Township of Belleville, County of Essex, New Jersey, at its Administrative Office Complex, 190 Cortlandt Street, Belleville, New Jersey, in accordance with the specifications prepared by the Board Secretary/Business Administrator, for Trash Containers, on December 16, 1992 at 10:30 am prevailing time.
Specifications may be obtained upon application to the office of the Business Administrator, 190 Cortlandt Street, Belleville, New Jersey 07008.
No bid will be considered, regardless of the postmark, unless it is in the hands of the School Business Administrator prior to the time set for the opening of the bids.
The Board of Education reserves the right to reject any or all bids, and/or to accept the bid that in its judgment will be best for the School District of Belleville, and

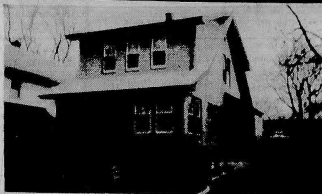
to waive any immaterial informalities.
Bidders are required to comply with the requirements of P.L. 1975, C. 127, N.J. Law Against Discrimination, and Ch. 33, Laws of 1977 and N.J.A.C. 17:27-2.5 as amended and supplemented from time to time.
No bid will be accepted unless accompanied by a certified check or bid bond for ten percent (10%) of the bid, drawn to the order of the Belleville Board of Education.
BY ORDER OF THE
BOARD OF EDUCATION
OF THE TOWNSHIP OF BELLEVILLE,
COUNTY OF ESSEX,
NEW JERSEY
Edward J. Appleson,
Board Secretary
School Business Administrator
Belleville Times
Dec. 3, 1992
Fee: \$15.27

THERE'S NO PLACE LIKE HOME

180 Centre St.
Nutley, N.J. 07110
667-3440

GEORGE E. MACMUNN CO.
REALTORS

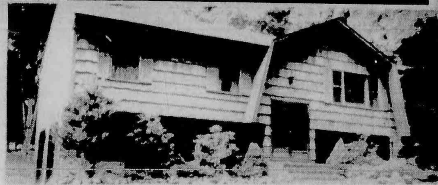
100 Woodport Road
Sparta, N.J. 07871
729-8727



NEW LISTING - NUTLEY Yantacaw School area, Asking \$169,900
Lovely is the word that best describes this updated, charming 3 BR home
w/ard, hard wood porch, rear deck, 1 1/2 baths & moderate taxes.
CALL NOW!!!



BELLEVILLE - ASKING \$124,900
Great location near #3 school, quiet St., 6 rooms, 2 car gar, screened porch,
new furnace. Estate wants quick sale!!



ASKING \$152,500.
Just one block from SPARTA in Byram, 12 yr. old, 3 BR's, 1 1/2 baths, huge
Fam. Rm. w/woodstove, 119x115 level lot, 3 zone heat. Walk to private
LAKE. A MUST SEE!!



SPARTA - ASKING \$159,900
JUST LISTED 1/2 acre level prop. in family neighborhood. Walk to play-
ground & tennis courts, 20x12 kit, formal DR, 3 BR's, 2 full baths, 26x20 Fam.
Rm. A GREAT BUY!!

DO YOU KNOW WHAT YOUR HOUSE IS WORTH TODAY?

We offer a current market
value analysis...
Just pick up the phone & call.

New Type Of Mortgage Increases Affordability



ness of EEMs and no uniform standard to determine if a home is energy efficient. The complexity and length of paperwork involved has also been a hindrance. Fortunately, this is now changing.

In November, 1991, the nation's largest secondary mortgage lender, Federal National Mortgage Association (Fannie Mae), agreed to provide an automatic two percent adjustment of its underwriting ratios for any home built to the 1989 Model Energy Code. A newly-built home can now easily qualify as long as it's built to meet or exceed the requirements of the Model Energy Code (MEC) published by the Council of American Building Officials (CABO).

Fannie Mae's acceptance of MEC guidelines provides lenders with a national standard by which energy efficiency can be determined and used in the mortgage underwriting process. Currently, there are at least ten states whose state codes equal or exceed the MEC guidelines. Therefore, any homes built in those states should automatically qualify for an EEM. For new home buyers in the other states, they need only specify to the builder that they want their house built to meet the MEC guidelines for it to qualify.

Unfortunately, there is currently no universally accepted guidelines for existing homes to automatically qualify for EEMs when resold. However, if a house has been reinsulated to the latest recommended thermal levels issued by the Department of Energy (DOE) it should qualify for an EEM. Check with your lender for the proper forms to apply for an EEM. What thermal levels are needed for an energy efficient home vary throughout the country. Depending on the region you live in, your recommended insulation levels will change.

For a free brochure called "How To Get The Home You Want" write to the CertainTeed Home Institute at P.O. Box 860, Valley Forge, PA 19482 or call 1-800-782-8777.

To many, looking for a new home is a time of happy anticipation and planning. That is, until the search begins for a mortgage. The discovery that finding a mortgage is sometimes harder than finding a "Dream Home" becomes very frustrating for many people. But, there is a ray of hope with a little-known mortgage—the Energy Efficient Mortgage (EEM).

The Energy Efficient Mortgage is a special type of mortgage that takes into consideration the savings in energy bills a homeowner realizes from living in an energy-efficient home. This "extra money" can be used to pay a higher monthly mortgage payment.

When lenders determine whether a prospective borrower can afford a house, they use debt-to-income ratios to establish the buyer's ability to repay the loan. The typical ratio is 28 percent of the gross income for housing and no more than 36 percent for all debts including the mortgage. Taking into consideration that an energy-efficient home will cost less to operate, the EEM raises the qualifying ratios to 30 and 38 percent respectively in recognition of anticipated energy savings.

Historically, only a very small percentage of mortgages written have been energy efficient mortgages. This is because of an overall lack of aware-

Save Fuel Costs Button Up Home

Insulating is important to control heat loss through walls, floors and ceilings.

Most of us live in houses which were built at a time when nobody worried about the cost and supply of oil, gas or electricity. Today, we are learning from our soaring heating bills that our homes are ill-protected against heat loss. However, by adding more insulation where there is none or too little and by installing weatherstripping and storm windows, we can cut heat loss, use less fuel and save money.

Insulating is really very simple. All you need is the proper insulation and a good stapler like Arrow's T-50 Staple Gun, E1 50/ETN 50 Electro-Matic Staple Gun or H1-50A Hammer Tacker. Load your gun with staples that have 1/2" legs. These have ample penetration in the softwood studs and excellent holding power. Insulation with vapor barriers usually has flanges

at the edges for easy stapling.

Press the insulation in between the studs and staple the flange on one side to the front of the adjacent stud; repeat with the flange on the other side. The entire cavity between studs should be filled with insulation from top to bottom without any gaps or breaks. The staples should be driven every six inches. Note: If you use insulation with an aluminum foil vapor barrier, the flanges on both sides must be stapled to the sides of the studs. If you have a vapor barrier facing the warmer adjacent areas, the barrier and its flanges will be out of reach on the inside of the cavity. Support this insulation with chicken wire stapled to the studs.

If you use insulation without a vapor barrier, place it between the studs in the usual way, then cover the entire wall with sheets of clear polyethylene

plastic as a vapor barrier. If possible, fold the sheet so you are stapling through a double thickness. Staples should be inserted every 8 inches along the front end of each stud.

For additional tool information, write to Arrow Fastener Company, Inc., 271 Mayhill Street, Saddle Brook, NJ 07662.



Left, chicken wire support stapled to studs. Right, polyethylene vapor barrier stapled to studs.

OBSERVE THE WARNING SIGNS.



If you have chest pain lasting two minutes or more, see a doctor.

American Heart Association

© 1992 American Heart Association

OPEN HOUSE SUNDAY 1-3 P.M.
52 EDGAR PLACE

Immaculate 61/2 room Yantacaw Colonial with finished rooms in basement, new kitchen & bath, one car garage.

ALSO LET US SHOW YOU
10 DE VAUSNEY PLACE
97 BEECH STREET

Both a surprise at the price.

EVERYONE KNOWS

GEORGE T. BOWES

YOUR NUTLEY REALTOR SINCE 1933
681 FRANKLIN AVE. NUTLEY 667-3376



**ATTENTION
REALTORS!**



You can be part of our
**SPECIAL REAL ESTATE
SECTION**

For More Information

Call Us Now!!!

667-2700

RESERVE SPACE TODAY!

THE CLASSIFIEDS

HOURS:
Mon.-Fri. 9am-5pm
Call:
667-3000

All Classified Ads appear automatically in all three of our papers: The Nutley Sun, Belleville Times, Bloomfield Life.

Transient Ads — Paid in Advance

First 4 lines \$16.91
Each Additional Line \$1.52
Borders Are Available
For a Fee of \$10.00
Contract Rates Available
Are Accepted
Call Today
667-3000

Check your Ad the first day of publication

CREDITS:

Credits & adjustments are to be made only for errors which significantly alter the effectiveness of the ad, such as a wrong telephone number or price. Credits will not be issued for typographical errors or misspelled words. The newspapers can assume responsibility only for MAJOR errors in the first day's publication.

Classified Deadline Tuesday 12 Noon

Name		
Address		
Phone		
Category		
<input type="checkbox"/> Border \$10.00 Additional		
Run Date	Number of Insertions	
<input type="checkbox"/> Check Visa M/C No.		

PARTS ACCESSORIES SERVICES



ATTENTION! AUTO PARTS

WILL PAY CASH FOR ANY JUNK CAR IN ANY CONDITION
Highest prices paid for late models.

USED CARS & TRUCKS
USED PARTS
991-4246 or 991-0081
51 Stover Ave., Kearny
USED PARTS

ATTORNEYS

HARRY S. MILLER
ATTORNEY AT LAW
1-800-660-0324
EMPHASIZING
"Backruptcy" "Corporate
Real Estate" "Collection"
Personal Injury
FREE Consultation
Evening/Weekend Hours
1135 Broad St. CLIFTON

AUTO SALES

1977 PLYMOUTH FURY,
\$300 OR BEST OFFER,
AS IS.
CALL 667-6576

1984 CADILLAC
Fleetwood Brougham
Coupe

Very low mileage. Fully loaded w/wood roof, car phone and many extras. Mint condition in and out. Must sell due to illness.
Best Offer!
743-9088 after 7pm.

1986 Ford Taurus
4 cyl. Mint cond.
751-5487

1986 Mercury Marquis,
fully eqpd. Excl. maint.
81,000 mi. Turbo \$4,500.
Call 751-3108

FOR SALE

'91 Mercury Cougar, LS
Auto V-6; AC, PS, PB,
Auto V-6, PL, P, seat,
cruise, tint, AM/FM
stereo/cass., rear def.
remote alarm, 4 new tires.
Dark blue w/gray cloth int.
Garage kept, 21,000 miles.
\$13,000 or B.O.
661-1174

FREE REMOVAL OF JUNK CARS

24 HR SERV
CALL TWIN TOWING
751-8430

WANTED ANY CAR CASH PAID

24 HRS A DAY
201-429-1324

AUTO WRECKERS

JUNK CARS WANTED
Free Tow-Away
"Same Day Pick-Up"
(In Most Cases)
S.O.S. TOWING, INC.
429-4741 Bloomfield
481-2610 Newark

GENERAL NOTICES

BAHAMA CRUISE
5 days/4 nights.
Overbooked! Must sell
\$149 per person. Limited
tickets. 1-800-329-2000
Ext. 970 Licensed &
Bonded Agency

PERSONAL NOTICES

ADOPTION is a loving
option. Happily married,
professional couple would
like to complete our
family. Call Barb and
Mike, collect.
(215) 376-9742 (days);
(215) 527-4123 (nights)

DIVORCE KIT DO IT YOURSELF

M/F, 9am-5pm
(908) 782-5540

PAST LIVES, SOUL
TRAVEL, And Dreams are
Three Ways Soul Learns
Spiritual Lessons. Free
Brochure Give Soul
Travel Exercise. Call
ECKANKAR, Religion of
the Light and Sound of
God. 1-800-762-4888,
Dept. 630

The Colonial Sheltered
care home has state lic.
health care facility
operates under an open
admission policy with
regard to race, color or
nationality origin.

UNIQUE SANTA letter
send name, address,
child's age, with \$5.00
check or \$10. for senti-
tive letter and small gift.
LiKar The Studio, P.O.
Box 110107, Nutley, NJ
07110

CHILD CARE

NANNY D'S
INFANT CARE CENTER
Full Day Sessions
6 weeks to 2 Yrs. Old
204 Washington Avenue
Belleville 759-1524
Director: Dolores Art

BABY SITTING SERVICES

Nutley Mom has 1
opening in home daycare.
Checkable references.
Meals included. 667-1392

EMPLOYMENT WANTED

WANTED P/T POSI-
TION EVENINGS & OR
WEEKENDS. OFFICE
WORK. Word processing,
PC experience. Also,
paralegal degree. ALSO,
WORK FROM HOME
ON WORD
PROCESSOR. PICK UP
& DELIVER. Please call
after 6pm leave message
667-8565.

GENERAL OPPORS.

*MODELS/SINGERS
*DANCERS/KIDUS
TEENS/TWENTIES*
*COVER GIRL
STUDIO*
261-2042 Litchwood 193200
River Edge

Office Suite
ATTENTION:
Unemployed
Bergen & Passaic County
Residents

*Information Processing
*Computerized Acc'l.
*Lotus of WordPerfect

If you are between the
ages of 18-65, lost your
job due to plant closing or
downsizing and are
anxious to return to work,
You may be eligible for
federal funding.

Call 778-8138

For additional info,
WORLDWIDE
BUSINESS SCHOOLS
50 MI. Prospect Ave.
Cliffon, NJ 07013

ALL-PHASE EMPLOYMENT SERVICE

382 Franklin Ave.
Nutley, N.J.
661-W.O.R-K
997-W.O.R-K
Permanent & Temporary
P/T & P/T positions
Vacation Plan

AVON SALES representative needed P/T - P/T. All areas.

Call Carla
1-800-395-3383

Bookkeepers Asst
P/T an, comp exp,
dependable. Send Resume
to: Nutley Sun, P.O. Box
324, 800 Bloomfield Ave
Nutley, NJ 07110

BURGULAR ALARM
INSTALLER & HELPER.
NO EXPERIENCE
751-4512

GENERAL OPPORS.

CLASSIFIED SALES

Local newspaper group
seeks F/T, highly
motivated salesperson for
our classified department.
Duties include heavy
phone sales, computer
input & general office
duties. Must be a good
speller. Computer
knowledge helpful, but not
necessary. Salary plus
commission.
For interview call
Arlene Ziem at 667-2100
Mon. thru Fri. 9 to 5pm

COLLEGE STUDENTS

Semester break work.
Special 1 to 5 week work
program. \$11 to start.
Interview now - work
begins after finals. Con-
tinuation next semester
possible. 201-239-3382.

DENTAL ASSISTANT

Small private Nutley office.
2 nights.
Exp. nec. Call 661-3099.

DRIVERS TAKE CHARGE...

...of your career
and your life. Drive for
J.B. Hunt and earn top
pay and benefits. We pay
for your OTR experience -
up to \$0.28 per mile.
1-800-219-HUNT EOE/
Subject to drug screen

Hairdresser/Manicurist
Salon paying 70/30 comm.
for prof w/following.
Call Tracy 667-2110 or
751-8337

PERSON NEEDED FOR

light assembly work for
manufacturing firm near
Mill St. in Belleville.
Hours 8:30 AM to 4 or
5 PM. Starting rate \$7.00
per hour, raises every 4
months. Call 882-8063.

PROGRAMMER
WITH NIXDORF KEY
DISK OR SIMILAR
KEY DISK SYSTEMS
PROGRAMMING EXP.
NEEDED. EXP IN P.C.
PROGRAMMING HELPFUL.
BENEFITS & ADVAN-
CEMENT OPPORTY'S.
MAIL RESUME TO:
P.O. BOX 603,
KEARNY, NJ 07032
OR FAX TO
201-998-7242

RECEPTIONIST-

Montclair medical practice
is seeking outgoing,
energetic individual for
front desk position. Duties
include scheduling,
patient billing, computer,
telephone & in-office
patient contact. Full-time
days. Please call 744-5152.

RN, LPN, Medical Assistant, E/T or 2 people to share full time. Busy 3 doctor Urology office.

Montclair/Glen Ridge
area. M-F. Pleasant work-
ing cond. Call 746-3322
Sheila

Sales Person, P/T or P/T,
2 Eves & Sats, apply in
person, Macs Bros, 512
Kearny Ave., Kearny.

Truck Driver, E/T. Must
have valid drivers license.
Apply in person, Macs
Bros, 519 Kearny Ave.,
Kearny.

TRUCK DRIVERS

The Relocation Services
Division of North
American Van Lines, Inc.,
needs owner operators
immediately. Up to \$5,000
contract signing bonus
and \$200,000 guaranteed
linehaul offering per year
for top quality van
operators with 2 yrs. exp.
in household goods or
electronics. For those w/
no exp., tuition-free train-
ing & a full lease or pur-
chase avail. 1-800-234-
3112 Dept. V-348

WE'LL PAY YOU to type
names and addresses from
your home \$500.00 per
1000 Call 1-900-896-1666
(\$1.49 min./1hrs.+) or
Write: PASSE - W6737,
161 S. Lincolnway, N.
Aurora, IL 60542

BUSINESS OPPORS.

DELI & PROPERTY
Belleville (Washington
Ave) includes beautiful 6
m apt. Parking. Good
gross w/additional growth
potential!! Asking
\$300,000, but owner is
motivated!!
D. Paul Lettini
R.E. Broker 450-8121
Eves. 450-0958

INTERNATIONAL COMPANY SEEKING INDIVIDUAL TO INVEST \$150,000.00

ESTIMATE EARNINGS
\$100 - \$2500 WEEK
50 WEEK COIN-OP
SNACK MACHINES
LOCATED. SELL
SNACKERS - 116 R -
SHEI'S DIET ITEMS
1-800-841-4322

Own Your Own Business!

Be Your Own Boss!
\$180.00 start-up cost
Call Today 201-748-1394

Salon 4 Sale. Great busi-
ness oppy, newly remod.
best reas offer. Call 908-
688-8066. Leave message.

TAVERN & PROPERTY!!

Belleville (Silver Lake)
Great medical well-
estab. business! Owner
financing \$160K!
D. Paul Lettini
R.E. Broker 450-8121
Eves. 450-0958

BUSINESS OPPORS.

DELI & PROPERTY

Belleville (Washington
Ave) includes beautiful 6
m apt. Parking. Good
gross w/additional growth
potential!! Asking
\$300,000, but owner is
motivated!!
D. Paul Lettini
R.E. Broker 450-8121
Eves. 450-0958

INTERNATIONAL COMPANY SEEKING INDIVIDUAL TO INVEST \$150,000.00

ESTIMATE EARNINGS
\$100 - \$2500 WEEK
50 WEEK COIN-OP
SNACK MACHINES
LOCATED. SELL
SNACKERS - 116 R -
SHEI'S DIET ITEMS
1-800-841-4322

Own Your Own Business!

Be Your Own Boss!
\$180.00 start-up cost
Call Today 201-748-1394

Salon 4 Sale. Great busi-
ness oppy, newly remod.
best reas offer. Call 908-
688-8066. Leave message.

TAVERN & PROPERTY!!

Belleville (Silver Lake)
Great medical well-
estab. business! Owner
financing \$160K!
D. Paul Lettini
R.E. Broker 450-8121
Eves. 450-0958

BE A RADIO-ANNOUNCER

On the job training at
local radio stations. Train
around work-schedules.
No experience required.
Call now for FREE
brochure 1-800-955-7234

ARTS & CRAFTS

Handycrafters Holiday
12/4, (9-6), 12/5 (10-5),
180 Sylvan Rd.
Bloomfield. Holiday gift
values. Free drawings.

ARTS & CRAFTS

Handycrafters Holiday
12/4, (9-6), 12/5 (10-5),
180 Sylvan Rd.
Bloomfield. Holiday gift
values. Free drawings.

ARTS & CRAFTS

Handycrafters Holiday
12/4, (9-6), 12/5 (10-5),
180 Sylvan Rd.
Bloomfield. Holiday gift
values. Free drawings.

ARTS & CRAFTS

Handycrafters Holiday
12/4, (9-6), 12/5 (10-5),
180 Sylvan Rd.
Bloomfield. Holiday gift
values. Free drawings.

ARTS & CRAFTS

Handycrafters Holiday
12/4, (9-6), 12/5 (10-5),
180 Sylvan Rd.
Bloomfield. Holiday gift
values. Free drawings.

ARTS & CRAFTS

Handycrafters Holiday
12/4, (9-6), 12/5 (10-5),
180 Sylvan Rd.
Bloomfield. Holiday gift
values. Free drawings.

ARTS & CRAFTS

Handycrafters Holiday
12/4, (9-6), 12/5 (10-5),
180 Sylvan Rd.
Bloomfield. Holiday gift
values. Free drawings.

ARTS & CRAFTS

Handycrafters Holiday
12/4, (9-6), 12/5 (10-5),
180 Sylvan Rd.
Bloomfield. Holiday gift
values. Free drawings.

ARTS & CRAFTS

Handycrafters Holiday
12/4, (9-6), 12/5 (10-5),
180 Sylvan Rd.
Bloomfield. Holiday gift
values. Free drawings.

ARTS & CRAFTS

Handycrafters Holiday
12/4, (9-6), 12/5 (10-5),
180 Sylvan Rd.
Bloomfield. Holiday gift
values. Free drawings.

ARTS & CRAFTS

Handycrafters Holiday
12/4, (9-6), 12/5 (10-5),
180 Sylvan Rd.
Bloomfield. Holiday gift
values. Free drawings.

ARTS & CRAFTS

Handycrafters Holiday
12/4, (9-6), 12/5 (10-5),
180 Sylvan Rd.
Bloomfield. Holiday gift
values. Free drawings.

ARTS & CRAFTS

Handycrafters Holiday
12/4, (9-6), 12/5 (10-5),
180 Sylvan Rd.
Bloomfield. Holiday gift
values. Free drawings.

ARTICLES FOR SALE

Commodore 64 w/2 disk
drives, monitor & printer.
Hundreds of software &
booklets \$200 or B.O.
Call 429-9648,
ask for Dan Jr.

Just in time for Xmas!
1 sz 12 full light minik coat
(black Glams), 1 sz light
Coyote at 10. Lamb Jacket
1 sz fits all. All excl cond.
661-1328

POOL 20 ft x 10 ft oval.
Deck 4 ft & filter. \$600 or
B.O 661-1432

WANTED Used/Air Conditioners CAS!!!

482-3681

WOLF TANNING BEDS
New Commercial-Home
Units From \$199.00.
Lamps - Lotions -
Accessories. Monthly Pay-
ments Low As \$18.00.
Call Today FREE NEW
Color Catalog
1-800-228-6292

ARTICLES WANTED

Buying
Baseball Cards
*Paying High Prices
*Instant Christmas Cash
*Call Anytime
667-9051

ESTATE SALES

Conducted or will
purchase contents, fine
jewelry, costume jewelry,
furniture & rugs.
Call 748-9501
Leave Mess. For Liz

ESTATE SALES

Conducted or will
purchase contents, fine
jewelry, costume jewelry,
furniture & rugs.
Call 748-9501
Leave Mess. For Liz

ESTATE SALES

Conducted or will
purchase contents, fine
jewelry, costume jewelry,
furniture & rugs.
Call 748-9501
Leave Mess. For Liz

ESTATE SALES

Conducted or will
purchase contents, fine
jewelry, costume jewelry,
furniture & rugs.
Call 748-9501
Leave Mess. For Liz

ESTATE SALES

Conducted or will
purchase contents, fine
jewelry, costume jewelry,
furniture & rugs.
Call 748-9501
Leave Mess. For Liz

ESTATE SALES

Conducted or will
purchase contents, fine
jewelry, costume jewelry,
furniture & rugs.
Call 748-9501
Leave Mess. For Liz

ESTATE SALES

Conducted or will
purchase contents, fine
jewelry, costume jewelry,
furniture & rugs.
Call 748-9501
Leave Mess. For Liz

ESTATE SALES

Conducted or will
purchase contents, fine
jewelry, costume jewelry,
furniture & rugs.
Call 748-9501
Leave Mess. For Liz

ESTATE SALES

Conducted or will
purchase contents, fine
jewelry, costume jewelry,
furniture & rugs.
Call 748-9501
Leave Mess. For Liz

ESTATE SALES

Conducted or will
purchase contents, fine
jewelry, costume jewelry,
furniture & rugs.
Call 748-9501
Leave Mess. For Liz

ESTATE SALES

Conducted or will
purchase contents, fine
jewelry, costume jewelry,
furniture & rugs.
Call 748-9501
Leave Mess. For Liz

ESTATE SALES

Conducted or will
purchase contents, fine
jewelry, costume jewelry,
furniture & rugs.
Call 748-9501
Leave Mess. For Liz

ESTATE SALES

Conducted or will
purchase contents, fine
jewelry, costume jewelry,
furniture & rugs.
Call 748-9501
Leave Mess. For Liz

ESTATE SALES

Conducted or will
purchase contents, fine
jewelry, costume jewelry,
furniture & rugs.
Call 748-9501
Leave Mess. For Liz

ESTATE SALES

Conducted or will
purchase contents, fine
jewelry, costume jewelry,
furniture & rugs.
Call 748-9501
Leave Mess. For Liz

ESTATE SALES

Conducted or will
purchase contents, fine
jewelry, costume jewelry,
furniture & rugs.
Call 748-9501
Leave Mess. For Liz

FURNITURE

*Used Filing Cabinets
*Chairs *Desks
EDELSTEIN OFFICE
FURNITURE, WISE
946 Market St-Paterson
Cor.Lakeview Ave & R180
523-6153

FOR SALE!!
2 wood trimmed, high
back fireseat chairs.
Molton velvet.<

HOUSES FOR SALE

NUTLEY
3 BR, split level w/fin. room, fin. bent, w/sum-mer kit. Close to all trans. Call Marie at

Century 21
Stanford Agency
86 Union Ave. Nutley
235-9000

APARTMENTS UNFURNISHED

BELLEVILLE
1 & 2 BR beautiful garden apts. H/H/W sup. For info call 450-1641.

Belleville 2nd flr, 4 spa-cious rms, parking avail. W/w closets. New windows. Freshly painted. \$650. No pets. Call 661-3687.

BELLEVILLE'S LUXURY COMMUNITY

1 & 2 Bedroom Ultra-modern garden apts. in a quiet community. W/W Carpeting, H/H/W, Laundry Room, and Safe. Parking are included. Call:

(201) 759-8379

Belleville 3 lg rms, ref & stove, H/H/W suppl. \$500 bus couples/incl pref. No Pets. Call 759-1735

Belleville - 3 rms. Avail Dec. 15. One month sec. Call 887-5190

BELLEVILLE & VIC

NO FEE

2 1/2 rms, h/h/w incl. \$475.
3 rms, h/h/w incl. \$485.
5 rms, h/h/w incl. \$750.

** CASALE **

REALTOR 751-2300

Belleville - 6 rms, 3 brs, 1st flr, \$975. 5 rms, 2nd flr, \$875. Both with h/w, w/w carp. Avail Jan. 1. Call 751-2427, leave message.

BELLEVILLE

(Silver Lake) 1 BR, mod. kit & bth., new W/W carpet, A/C, H/H/W incl'd. \$585. mth. Wast \$525.

D. Paul Lettini

R.E. Broker 450-8121

Eves. 450-0958

Belleville 4 rms, 2nd flr, 80 Overlook Ave, Belleville, \$675. all utilities supply. Avail immed. 661-9159

Belleville 3 1/2 rms, 3rd flr, h/w incl. \$425.
4 rms, 1st flr, H/H/W incl. \$600.

6 mod rms, 2nd flr, supply own. \$700.

Bloomfield 3 rms, 2nd flr, supply own. \$700.

Bloomfield 3 1/2 rms, 3rd flr, h/w incl. \$425.
4 rms, 1st flr, H/H/W incl. \$600.

6 mod rms, 2nd flr, supply own. \$700.

Bloomfield 3 rms, 2nd flr, supply own. \$700.

Bloomfield 3 1/2 rms, 3rd flr, h/w incl. \$425.
4 rms, 1st flr, H/H/W incl. \$600.

6 mod rms, 2nd flr, supply own. \$700.

Bloomfield 3 rms, 2nd flr, supply own. \$700.

Bloomfield 3 1/2 rms, 3rd flr, h/w incl. \$425.
4 rms, 1st flr, H/H/W incl. \$600.

6 mod rms, 2nd flr, supply own. \$700.

Bloomfield 3 rms, 2nd flr, supply own. \$700.

Bloomfield 3 1/2 rms, 3rd flr, h/w incl. \$425.
4 rms, 1st flr, H/H/W incl. \$600.

6 mod rms, 2nd flr, supply own. \$700.

Bloomfield 3 rms, 2nd flr, supply own. \$700.

Bloomfield 3 1/2 rms, 3rd flr, h/w incl. \$425.
4 rms, 1st flr, H/H/W incl. \$600.

6 mod rms, 2nd flr, supply own. \$700.

Bloomfield 3 rms, 2nd flr, supply own. \$700.

Bloomfield 3 1/2 rms, 3rd flr, h/w incl. \$425.
4 rms, 1st flr, H/H/W incl. \$600.

6 mod rms, 2nd flr, supply own. \$700.

Bloomfield 3 rms, 2nd flr, supply own. \$700.

Bloomfield 3 1/2 rms, 3rd flr, h/w incl. \$425.
4 rms, 1st flr, H/H/W incl. \$600.

6 mod rms, 2nd flr, supply own. \$700.

Bloomfield 3 rms, 2nd flr, supply own. \$700.

Bloomfield 3 1/2 rms, 3rd flr, h/w incl. \$425.
4 rms, 1st flr, H/H/W incl. \$600.

6 mod rms, 2nd flr, supply own. \$700.

Bloomfield 3 rms, 2nd flr, supply own. \$700.

Bloomfield 3 1/2 rms, 3rd flr, h/w incl. \$425.
4 rms, 1st flr, H/H/W incl. \$600.

6 mod rms, 2nd flr, supply own. \$700.

Bloomfield 3 rms, 2nd flr, supply own. \$700.

Bloomfield 3 1/2 rms, 3rd flr, h/w incl. \$425.
4 rms, 1st flr, H/H/W incl. \$600.

6 mod rms, 2nd flr, supply own. \$700.

Bloomfield 3 rms, 2nd flr, supply own. \$700.

Bloomfield 3 1/2 rms, 3rd flr, h/w incl. \$425.
4 rms, 1st flr, H/H/W incl. \$600.

6 mod rms, 2nd flr, supply own. \$700.

Bloomfield 3 rms, 2nd flr, supply own. \$700.

Bloomfield 3 1/2 rms, 3rd flr, h/w incl. \$425.
4 rms, 1st flr, H/H/W incl. \$600.

6 mod rms, 2nd flr, supply own. \$700.

Bloomfield 3 rms, 2nd flr, supply own. \$700.

Bloomfield 3 1/2 rms, 3rd flr, h/w incl. \$425.
4 rms, 1st flr, H/H/W incl. \$600.

6 mod rms, 2nd flr, supply own. \$700.

Bloomfield 3 rms, 2nd flr, supply own. \$700.

Bloomfield 3 1/2 rms, 3rd flr, h/w incl. \$425.
4 rms, 1st flr, H/H/W incl. \$600.

6 mod rms, 2nd flr, supply own. \$700.

Bloomfield 3 rms, 2nd flr, supply own. \$700.

Bloomfield 3 1/2 rms, 3rd flr, h/w incl. \$425.
4 rms, 1st flr, H/H/W incl. \$600.

6 mod rms, 2nd flr, supply own. \$700.

APARTMENTS UNFURNISHED

Bloomfield Mod 3 1/2 rm
Garden Apt. H/H/W sup. \$650 per mo. Avail Dec. 1. Call 1-908-586-0930

Bloomfield -
3 1/2 lg mod rms, garden apt. H/H/W, washing facilities on premises & parking.
Call 743-5886 or 748-0302

Bloomfield Location & Value

3 1/2 rms, spoolies, w/hw kit & new appl, newly fin hardwood floors, great closets. H/H/W incl. On site laundry, well main, trans to NY & all conveniences at front door. Call 743-7261

Bloomfield - 2 1/2 rms, \$550 incl all util. N.Y. bus at door. Call 429-8444

Bloomfield

4 rooms and bath. Available immediately. Call 680-0264

Bloomfield
3 rms, \$550 + util, 1st fl. Avail 1/1.
** * MARZULLI **
743-2306

Bloomfield
3 rms. Laund. \$525, heat incl.
** * MARZULLI **
743-2306

NUTLEY
5 rms, 2 BRS. \$850. H/H/W incl. Avail 2/1/93.
** * MARZULLI **
743-2306

NUTLEY
5 1/2 rms. \$850 + util. Prkg for 2 cars. N.Y. bus at door. Call 887-5190

BELLEVILLE & VIC
NO FEE
2 1/2 rms, h/h/w incl. \$475.
3 rms, h/h/w incl. \$485.
5 rms, h/h/w incl. \$750.

** CASALE **

REALTOR 751-2300

Belleville - 6 rms, 3 brs, 1st flr, \$975. 5 rms, 2nd flr, \$875. Both with h/w, w/w carp. Avail Jan. 1. Call 751-2427, leave message.

BELLEVILLE

(Silver Lake) 1 BR, mod. kit & bth., new W/W carpet, A/C, H/H/W incl'd. \$585. mth. Wast \$525.

D. Paul Lettini

R.E. Broker 450-8121

Eves. 450-0958

Belleville 4 rms, 2nd flr, 80 Overlook Ave, Belleville, \$675. all utilities supply. Avail immed. 661-9159

Belleville 3 1/2 rms, 3rd flr, h/w incl. \$425.
4 rms, 1st flr, H/H/W incl. \$600.

6 mod rms, 2nd flr, supply own. \$700.

Bloomfield 3 rms, 2nd flr, supply own. \$700.

Bloomfield 3 1/2 rms, 3rd flr, h/w incl. \$425.
4 rms, 1st flr, H/H/W incl. \$600.

6 mod rms, 2nd flr, supply own. \$700.

Bloomfield 3 rms, 2nd flr, supply own. \$700.

Bloomfield 3 1/2 rms, 3rd flr, h/w incl. \$425.
4 rms, 1st flr, H/H/W incl. \$600.

6 mod rms, 2nd flr, supply own. \$700.

Bloomfield 3 rms, 2nd flr, supply own. \$700.

Bloomfield 3 1/2 rms, 3rd flr, h/w incl. \$425.
4 rms, 1st flr, H/H/W incl. \$600.

6 mod rms, 2nd flr, supply own. \$700.

Bloomfield 3 rms, 2nd flr, supply own. \$700.

Bloomfield 3 1/2 rms, 3rd flr, h/w incl. \$425.
4 rms, 1st flr, H/H/W incl. \$600.

6 mod rms, 2nd flr, supply own. \$700.

Bloomfield 3 rms, 2nd flr, supply own. \$700.

Bloomfield 3 1/2 rms, 3rd flr, h/w incl. \$425.
4 rms, 1st flr, H/H/W incl. \$600.

6 mod rms, 2nd flr, supply own. \$700.

Bloomfield 3 rms, 2nd flr, supply own. \$700.

Bloomfield 3 1/2 rms, 3rd flr, h/w incl. \$425.
4 rms, 1st flr, H/H/W incl. \$600.

6 mod rms, 2nd flr, supply own. \$700.

Bloomfield 3 rms, 2nd flr, supply own. \$700.

Bloomfield 3 1/2 rms, 3rd flr, h/w incl. \$425.
4 rms, 1st flr, H/H/W incl. \$600.

6 mod rms, 2nd flr, supply own. \$700.

Bloomfield 3 rms, 2nd flr, supply own. \$700.

Bloomfield 3 1/2 rms, 3rd flr, h/w incl. \$425.
4 rms, 1st flr, H/H/W incl. \$600.

6 mod rms, 2nd flr, supply own. \$700.

Bloomfield 3 rms, 2nd flr, supply own. \$700.

Bloomfield 3 1/2 rms, 3rd flr, h/w incl. \$425.
4 rms, 1st flr, H/H/W incl. \$600.

6 mod rms, 2nd flr, supply own. \$700.

Bloomfield 3 rms, 2nd flr, supply own. \$700.

Bloomfield 3 1/2 rms, 3rd flr, h/w incl. \$425.
4 rms, 1st flr, H/H/W incl. \$600.

6 mod rms, 2nd flr, supply own. \$700.

Bloomfield 3 rms, 2nd flr, supply own. \$700.

Bloomfield 3 1/2 rms, 3rd flr, h/w incl. \$425.
4 rms, 1st flr, H/H/W incl. \$600.

6 mod rms, 2nd flr, supply own. \$700.

Bloomfield 3 rms, 2nd flr, supply own. \$700.

Bloomfield 3 1/2 rms, 3rd flr, h/w incl. \$425.
4 rms, 1st flr, H/H/W incl. \$600.

6 mod rms, 2nd flr, supply own. \$700.

Bloomfield 3 rms, 2nd flr, supply own. \$700.

Bloomfield 3 1/2 rms, 3rd flr, h/w incl. \$425.
4 rms, 1st flr, H/H/W incl. \$600.

6 mod rms, 2nd flr, supply own. \$700.

Bloomfield 3 rms, 2nd flr, supply own. \$700.

Bloomfield 3 1/2 rms, 3rd flr, h/w incl. \$425.
4 rms, 1st flr, H/H/W incl. \$600.

6 mod rms, 2nd flr, supply own. \$700.

Bloomfield 3 rms, 2nd flr, supply own. \$700.

Bloomfield 3 1/2 rms, 3rd flr, h/w incl. \$425.
4 rms, 1st flr, H/H/W incl. \$600.

6 mod rms, 2nd flr, supply own. \$700.

Bloomfield 3 rms, 2nd flr, supply own. \$700.

Bloomfield 3 1/2 rms, 3rd flr, h/w incl. \$425.
4 rms, 1st flr, H/H/W incl. \$600.

6 mod rms, 2nd flr, supply own. \$700.

Bloomfield 3 rms, 2nd flr, supply own. \$700.

APARTMENTS UNFURNISHED

NUTLEY
3 rms, \$600 + util.
3 1/2 rms, \$610 h/h/w incl.
3 rms, \$650 h/h/w incl.
3 turn rms, \$700 h/h/w incl.
5 rms, \$775 + util.
5 rms, \$845 h/h/w incl.
5 rms, 1 1/2 bath Condo, \$1250 + util.

BELLEVILLE
3 rms, \$550 + util.
4 rms, \$600 + util.
4 rms, \$669 h/h/w incl.
3 rms, \$750 + util.
4 rms, \$783 h/h/w incl.
5 rms, \$800 + util.

Bloomfield

2 turn rms, \$300.
2 1/2 rms, \$425 h/h/w incl.
3 rms, \$450 + util.
3 rms, \$495 h/h/w incl.
2 1/2 rms, \$610 h/h/w incl.

Bloomfield
4 rms, \$650 h/h/w incl.
6 rms, \$750 + util.
4 rms, 2 baths, \$750 h/h/w incl.
5 rms, \$850 + util.
6 rms, 1 1/2 baths, \$995 h/h/w incl.

CLIFTON

3 rms, \$695 + util.

COSTANTINE REALTY
REALTOR 667-7070

Nutley 1 BR apt, \$525, incl's H/H/W. To view call owner Angelo at 287-2682

CONDOS FOR RENT

BELLEVILLE
Townhouse - \$1,000 + util. CA, W/W, W/D, like new
** * MARZULLI **
743-2306

BELLEVILLE
Bridgebrook Condos 725 Joralemon Street (Off Franklin Ave.)
Brok. 1 & 2 BRS. situated on 8 acres of beautiful landscaped grounds. Garage & pool incl in price. Private entry. Low maintenance incl heat, hot water & gas. Pets O.K.
VA & FHA approved. Sales \$85,000 - \$95,000
Rentals \$700 - \$850
Call Marge, 284-0904

PATRICIAN REALTY
Associates Realtors

BELLEVILLE
SALE OR RENT
Bridgebrook Condos 725 Joralemon Street (Off Franklin Ave.)
Brok. 1 & 2 BRS. situated on 8 acres of beautiful landscaped grounds. Garage & pool incl in price. Private entry. Low maintenance incl heat, hot water & gas. Pets O.K.
VA & FHA approved. Sales \$85,000 - \$95,000
Rentals \$700 - \$850
Call Marge, 284-0904

BELLEVILLE
SALE OR RENT
Bridgebrook Condos 725 Joralemon Street (Off Franklin Ave.)
Brok. 1 & 2 BRS. situated on 8 acres of beautiful landscaped grounds. Garage & pool incl in price. Private entry. Low maintenance incl heat, hot water & gas. Pets O.K.
VA & FHA approved. Sales \$85,000 - \$95,000
Rentals \$700 - \$850
Call Marge, 284-0904

BELLEVILLE
SALE OR RENT
Bridgebrook Condos 725 Joralemon Street (Off Franklin Ave.)
Brok. 1 & 2 BRS. situated on 8 acres of beautiful landscaped grounds. Garage & pool incl in price. Private entry. Low maintenance incl heat, hot water & gas. Pets O.K.
VA & FHA approved. Sales \$85,000 - \$95,000
Rentals \$700 - \$850
Call Marge, 284-0904

BELLEVILLE
SALE OR RENT
Bridgebrook Condos 725 Joralemon Street (Off Franklin Ave.)
Brok. 1 & 2 BRS. situated on 8 acres of beautiful landscaped grounds. Garage & pool incl in price. Private entry. Low maintenance incl heat, hot water & gas. Pets O.K.
VA & FHA approved. Sales \$85,000 - \$95,000
Rentals \$700 - \$850
Call Marge, 284-0904

BELLEVILLE
SALE OR RENT
Bridgebrook Condos 725 Joralemon Street (Off Franklin Ave.)
Brok. 1 & 2 BRS. situated on 8 acres of beautiful landscaped grounds. Garage & pool incl in price. Private entry. Low maintenance incl heat, hot water & gas. Pets O.K.
VA & FHA approved. Sales \$85,000 - \$95,000
Rentals \$700 - \$850
Call Marge, 284-0904

BELLEVILLE
SALE OR RENT
Bridgebrook Condos 725 Joralemon Street (Off Franklin Ave.)
Brok. 1 & 2 BRS. situated on 8 acres of beautiful landscaped grounds. Garage & pool incl in price. Private entry. Low maintenance incl heat, hot water & gas. Pets O.K.
VA & FHA approved. Sales \$85,000 - \$95,000
Rentals \$700 - \$850
Call Marge, 284-0904

BELLEVILLE
SALE OR RENT
Bridgebrook Condos 725 Joralemon Street (Off Franklin Ave.)
Brok. 1 & 2 BRS. situated on 8 acres of beautiful landscaped grounds. Garage & pool incl in price. Private entry. Low maintenance incl heat, hot water & gas. Pets O.K.
VA & FHA approved. Sales \$85,000 - \$95,000
Rentals \$700 - \$850
Call Marge, 284-0904

BELLEVILLE
SALE OR RENT
Bridgebrook Condos 725 Joralemon Street (Off Franklin Ave.)
Brok. 1 & 2 BRS. situated on 8 acres of beautiful landscaped grounds. Garage & pool incl in price. Private entry. Low maintenance incl heat, hot water & gas. Pets O.K.
VA & FHA approved. Sales \$85,000 - \$95,000
Rentals \$700 - \$850
Call Marge, 284-0904

BELLEVILLE
SALE OR RENT
Bridgebrook Condos 725 Joralemon Street (Off Franklin Ave.)
Brok. 1 & 2 BRS. situated on 8 acres of beautiful landscaped grounds. Garage & pool incl in price. Private entry. Low maintenance incl heat, hot water & gas. Pets O.K.
VA & FHA approved. Sales \$85,000 - \$95,000
Rentals \$700 - \$850
Call Marge, 284-0904

BELLEVILLE
SALE OR RENT
Bridgebrook Condos 725 Joralemon Street (Off Franklin Ave.)
Brok. 1 & 2 BRS. situated on 8 acres of beautiful landscaped grounds. Garage & pool incl in price. Private entry. Low maintenance incl heat, hot water & gas. Pets O.K.
VA & FHA approved. Sales \$85,000 - \$95,000
Rentals \$700 - \$850
Call Marge, 284-0904

BELLEVILLE
SALE OR RENT
Bridgebrook Condos 725 Joralemon Street (Off Franklin Ave.)
Brok. 1 & 2 BRS. situated on 8 acres of beautiful landscaped grounds. Garage & pool incl in price. Private entry. Low maintenance incl heat, hot water & gas. Pets O.K.
VA & FHA approved. Sales \$85,000 - \$95,000
Rentals \$700 - \$850
Call Marge, 284-0904

BELLEVILLE
SALE OR RENT
Bridgebrook Condos 725 Joralemon Street (Off Franklin Ave.)
Brok. 1

